



Ministry of Public Works
Department of Works and Engineering

Request for Proposals
For
Tynes Bay Waste to Energy Facility – The Sea Water Screening Plant -
Band Screen Replacement

ADDENDUM 2

Request for Proposals No.: **1512022**

Issued: **Thursday August 10, 2023**

Submission Deadline: **Friday October 13, 2023 15:00:00 local time**

Anticipated Execution of Agreement: **Friday October 27, 2023 15:00:00 local time**

Table of Contents

ADDENDUM 2	3
1.1 Deadline Extension.....	3
1.2 Answers to questions from 15 August 2023	3
Appendix A – Detail on Duplex Filters.....	4

ADDENDUM 2

1.1 Deadline Extension

The deadline for the RFP is extended by four weeks to Friday, October 13, 2023, and 15:00

1.2 Answers to questions from 15 August 2023

Are the band screens able to be operated from the control room?

No. The band screens are locally operated. The intention of the new screening system is for the band screens to be run automatically based on a local differential pressure sensor.

Can each band screen be tested individually?

The band screens can be tested individually.

Should all wiring be replaced?

Any wiring that is in exceptionally good condition can be re-used pending the approve of the project manager. Otherwise, all wiring should be replaced.

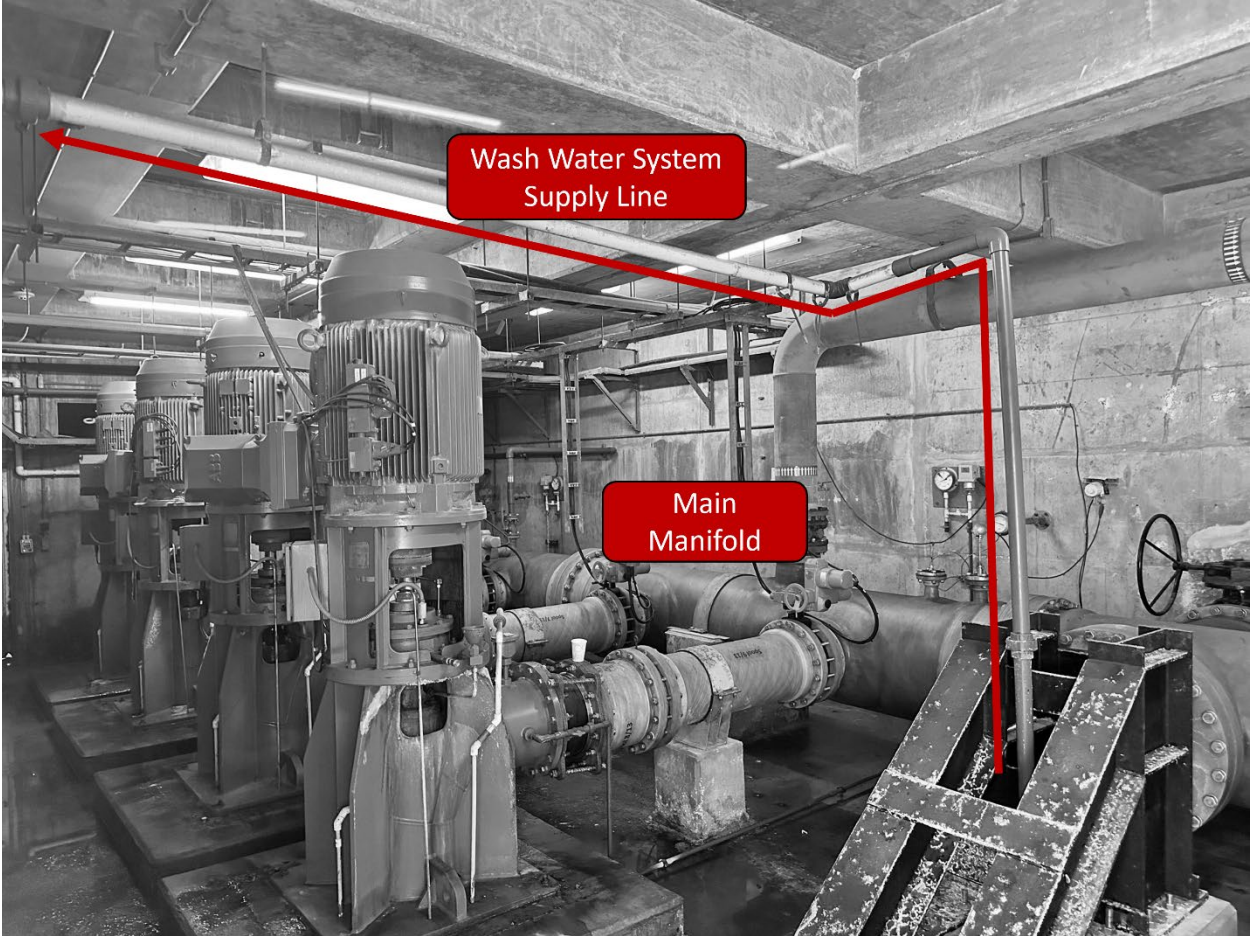
Clarification on Duplex filters and supporting pipework?

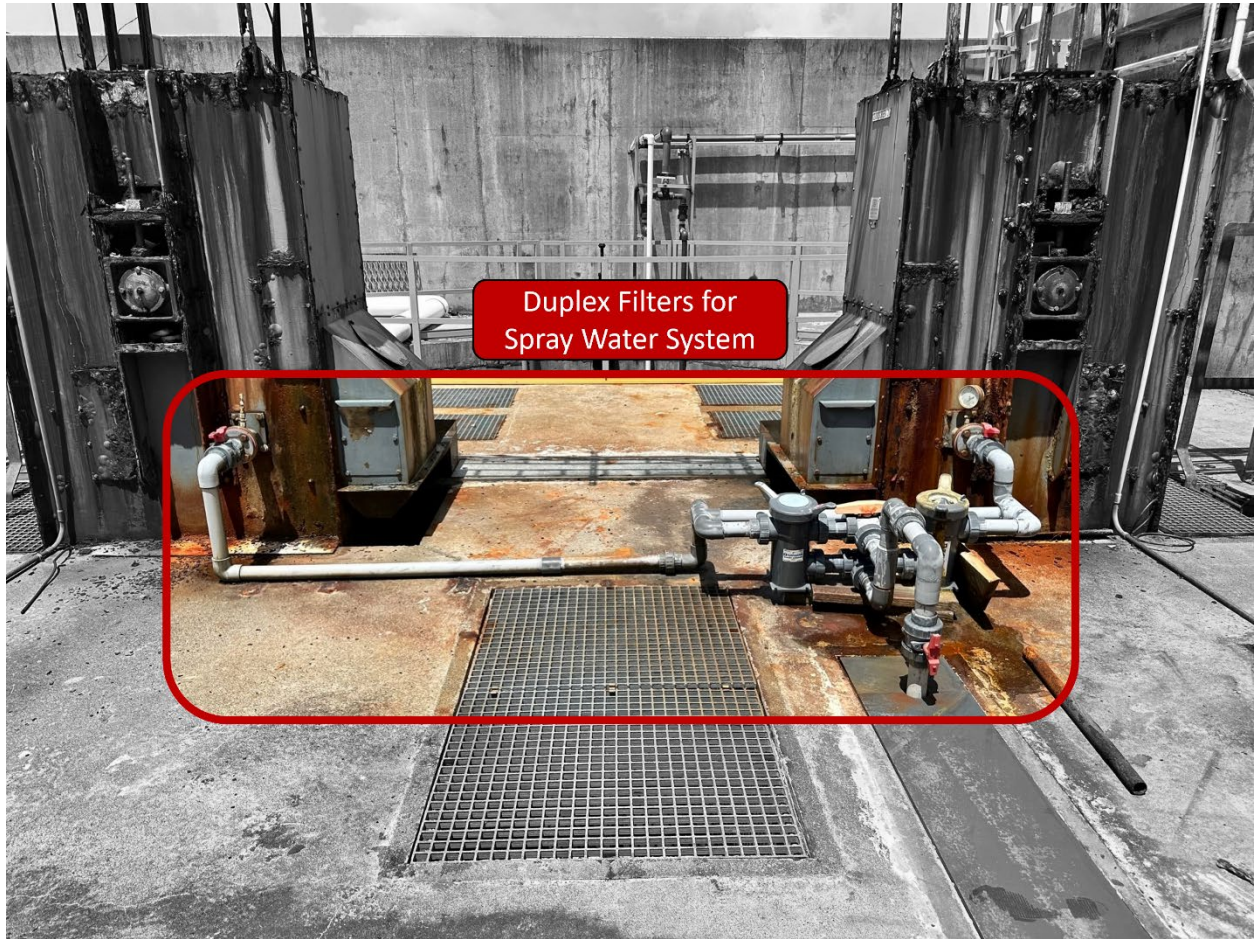
*There is currently a duplex filter inline upstream of the spray water wash system. The filters and pipework (shown in Appendix A) should be replaced. The duplex filters should be designed with manual control valves which allow each singular filter to be put into service and each filter can be isolated to change or clean the filter without isolating the entire spray wash system. **Pressure gages should be installed upstream and downstream of the filters with the scale appropriate for the pressure of the supply to the spray water system.** The water for the spray wash system is supplied from a line on the main manifold (shown in Appendix A) and has a separate line with a hose bib used for cleaning. These lines should also be replaced, and a hose bib put on the upper and lower levels. **Please install a hose reel with a heavy duty 100 ft hose and nozzle on the upper level.***

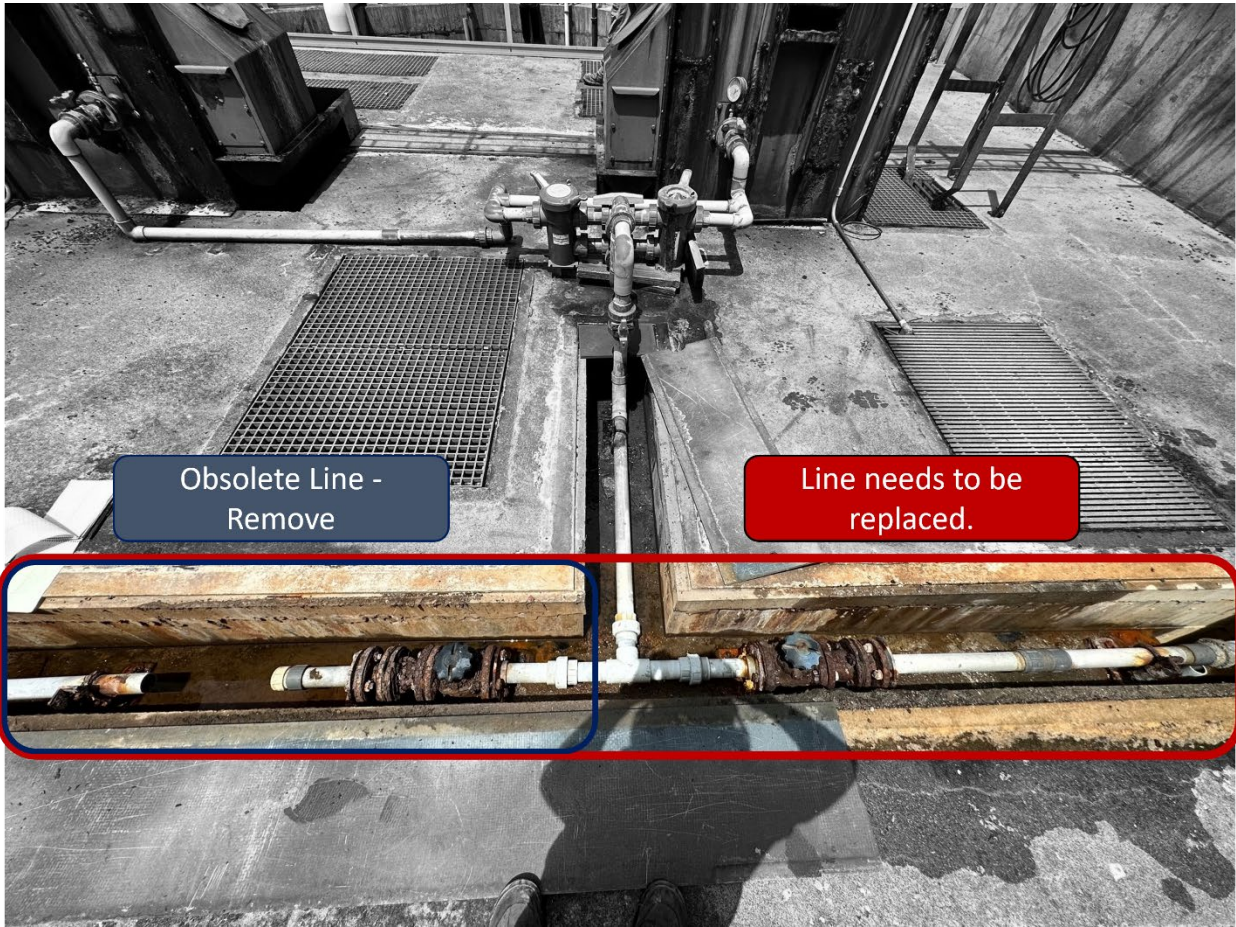
Clarification on Spray water system?

The spray water system is used to clean the mesh screens when the band screens are operating. The new system will use an automatic valve which allows flow only when the band screens are operational. The Respondent will be responsible for installing and testing the spray water system. The automatic valve is being supplier by the band screen manufacturer.

Appendix A – Detail on Duplex Filters







Obsolete Line -
Remove

Line needs to be
replaced.



