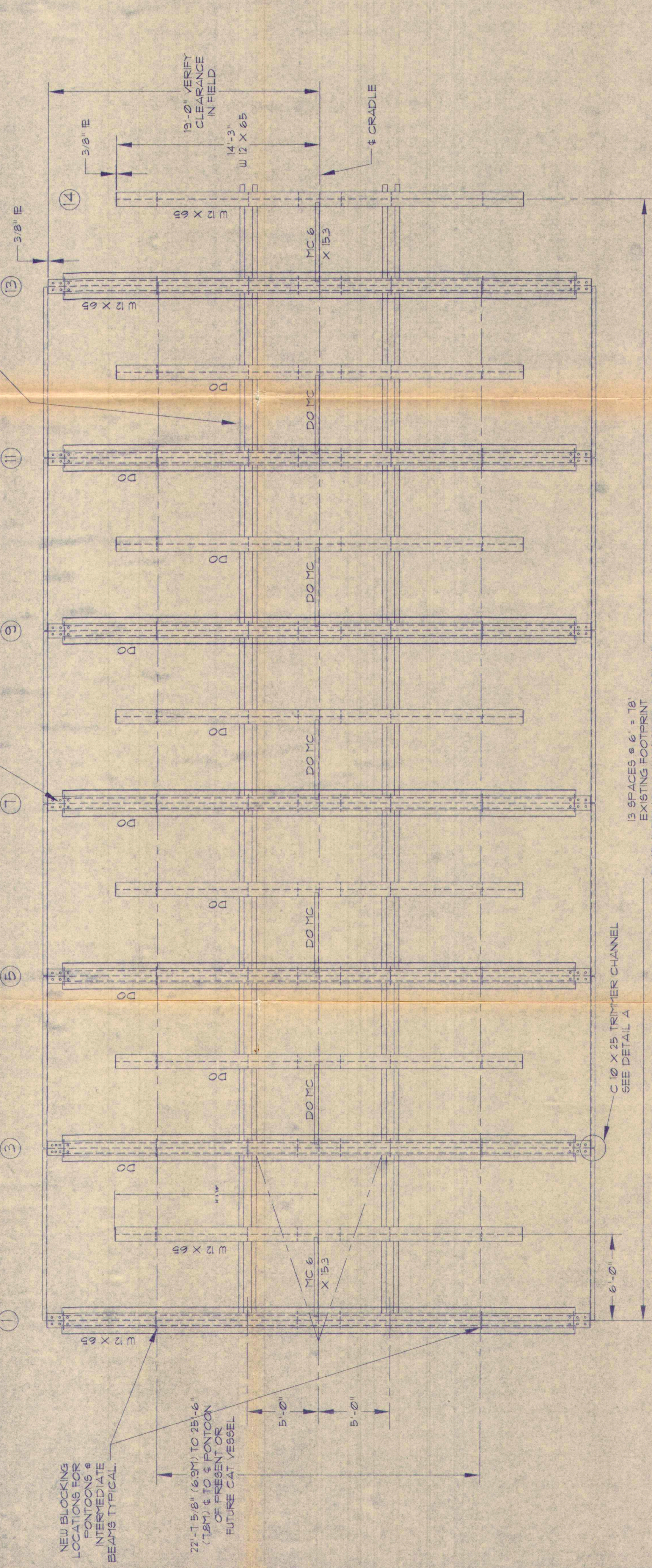
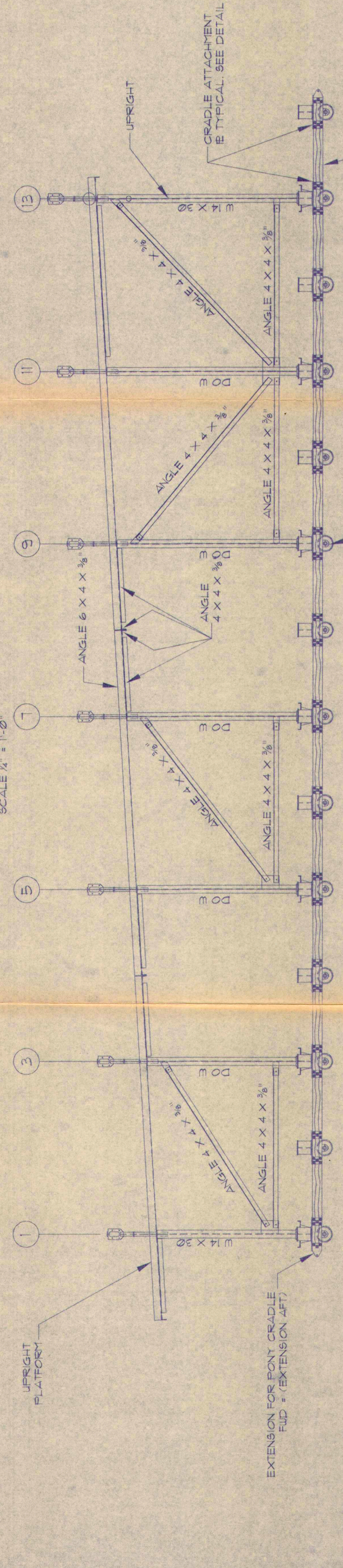


WALL LOCATION MAY PROHIBIT 40" CRADLE (PRESENT WIDTH = 36" VERIFY

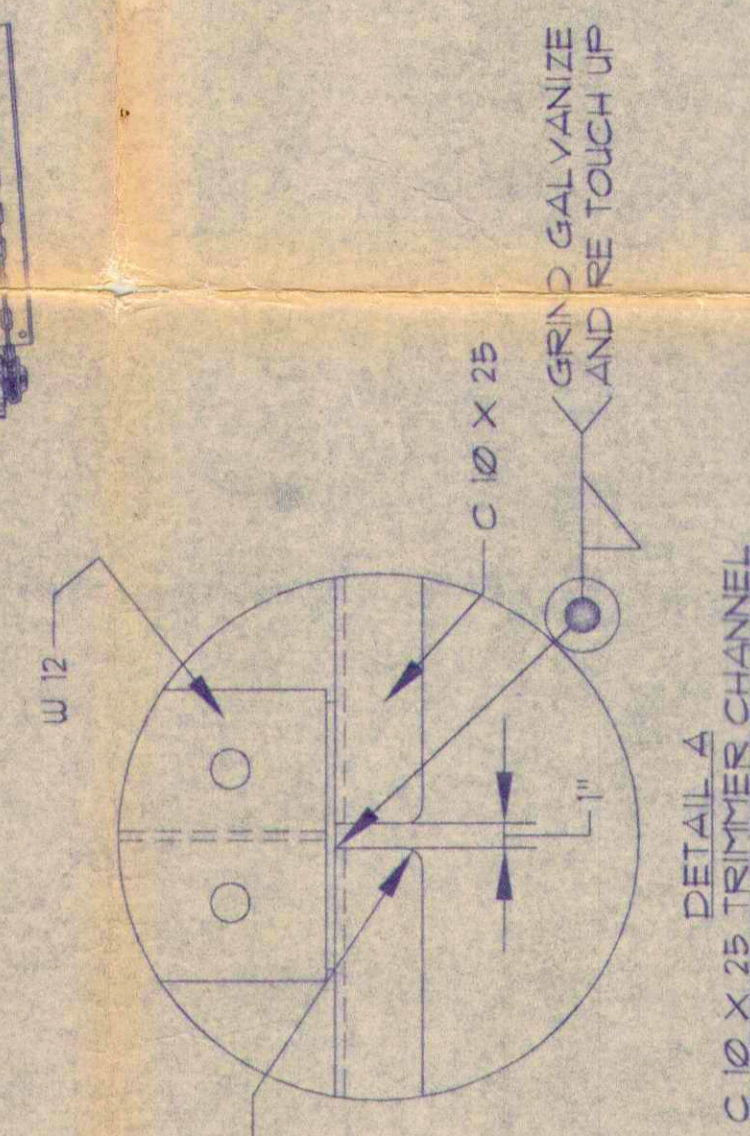
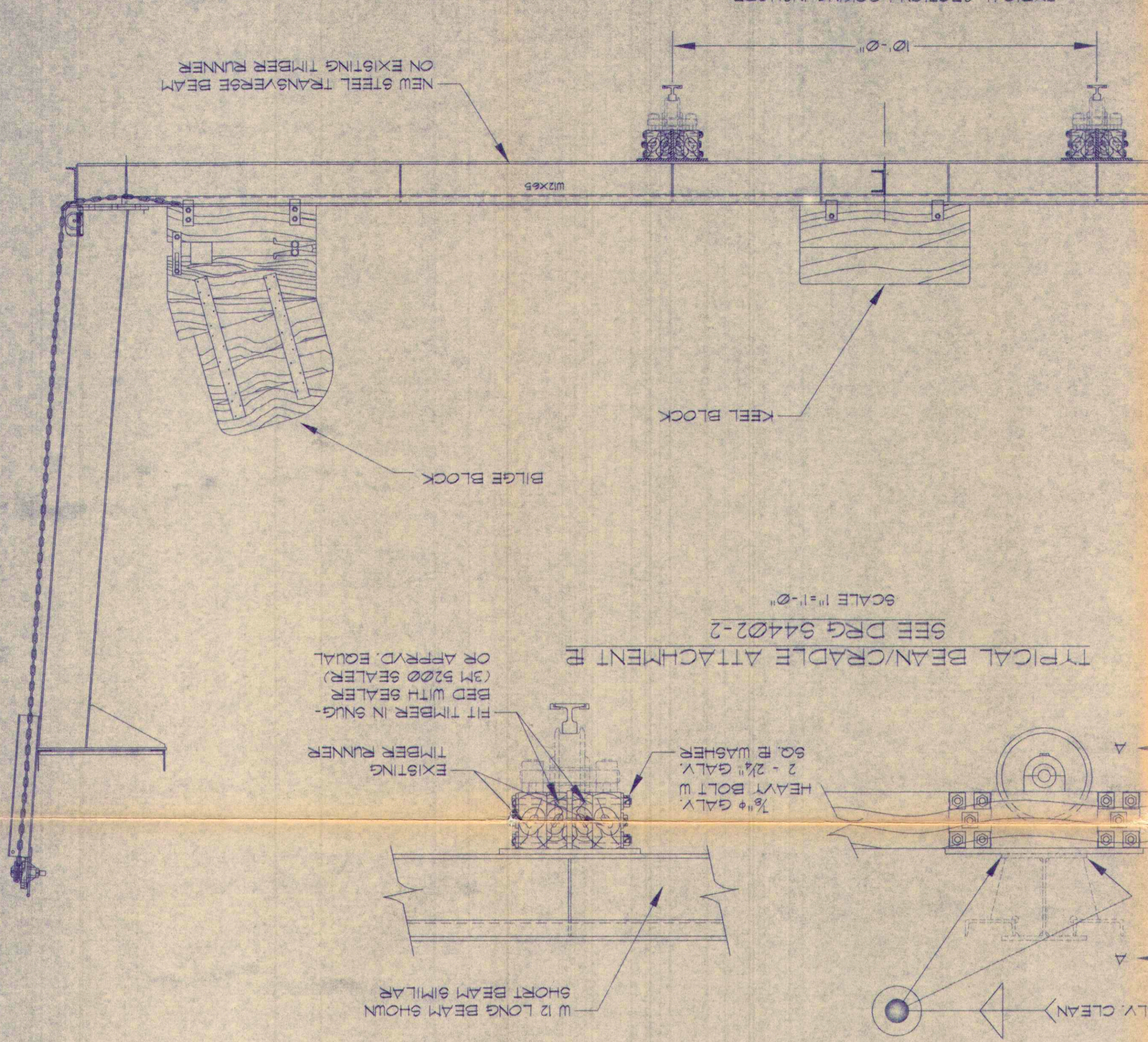
STEEL UPRIGHT TYPICALLY ON LONG (ODD #) TRANSVERSE BEAM ONLY



PLAN ALTERED CRADLE - EXISTING TIMBER RUNNER WITH NEW STEEL TRANSVERSE BEAMS
SCALE 1/4" = 1'-0"



SECTION VIEW THROUGH CRADLE
SCALE 1/4" = 1'-0"



SUBJECT TO APPROVAL

ISSUED
JULY 5 2007
GRANDALL
30000 UNIVERSITY AVENUE
CHelsea, MASSACHUSETTS
U. S. A.

GENERAL PLAN & ELEVATION
GALVANIZED TRANSVERSE BEAMS
USING EXISTING WOOD RUNNERS
BERMUDA MARINE & PORTS SERVICES
HAMILTON BERMUDA
MAY 2007

These designs and specifications are for your information only. It is the responsibility of the contractor to verify that all materials and methods of construction conform to the specifications and standards of the project. Grandall Design Group, Inc. does not warrant the accuracy or completeness of these drawings or specifications. No part of these drawings or specifications may be reproduced or transmitted in any form or by any means without the written permission of Grandall Design Group, Inc.

REVISIONS	DATE	DESCRIPTION
A		
B		
C		

Drawn: *[Signature]*
Checked: *[Signature]*
Approved: *[Signature]*

Grandall Design Group, Inc.
CHelsea, MASSACHUSETTS
U. S. A.

DWG. 84402-1