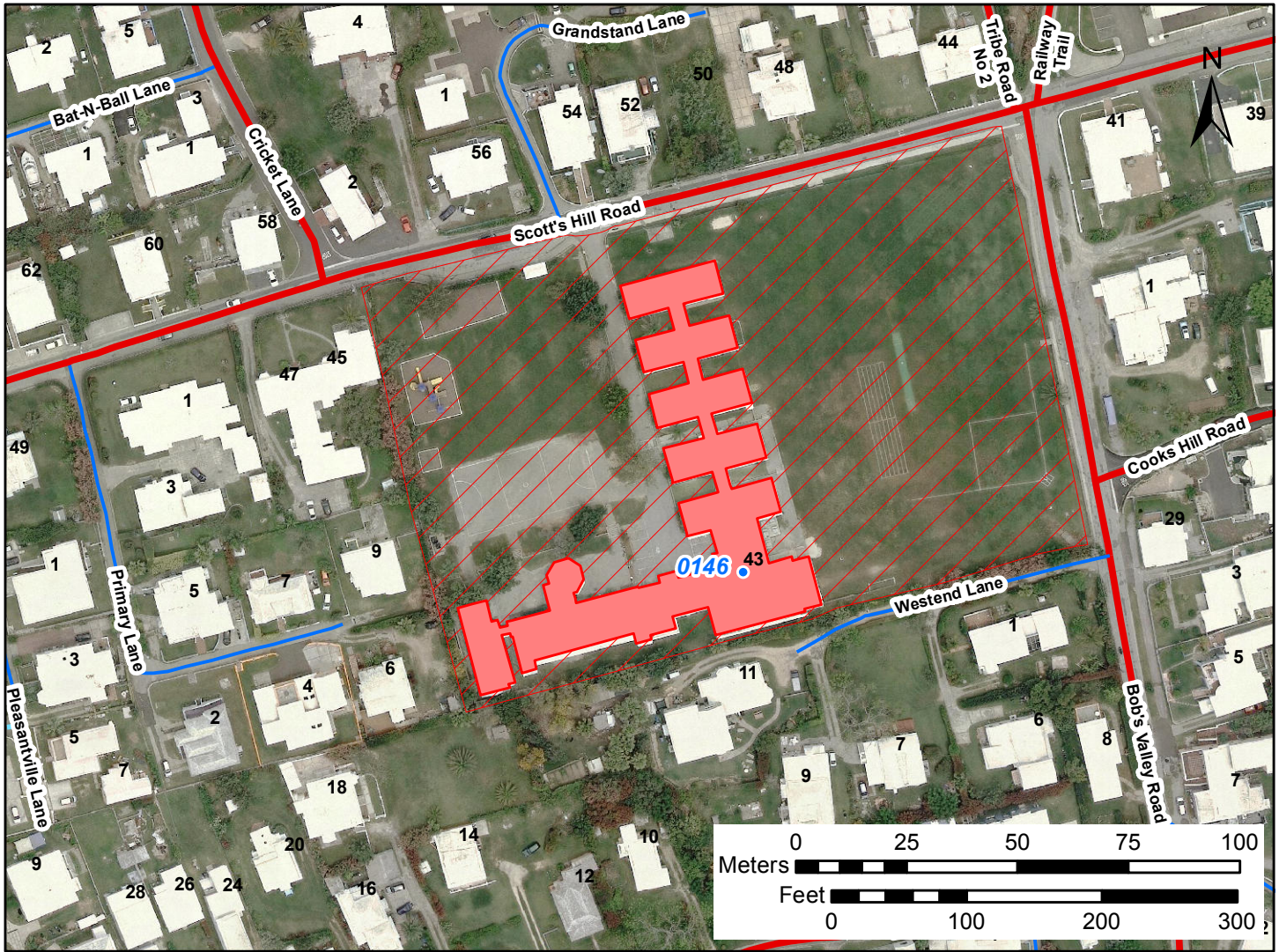




SITE PLAN



West End Primary School

Estates Reference #: **S0012**

Address: 43 Scott's Hill Road, Sandys, MA 04

School Type: **Primary School**

Areas

Total Building Footprint: 2,039 sq.m
 21,952 sq.ft

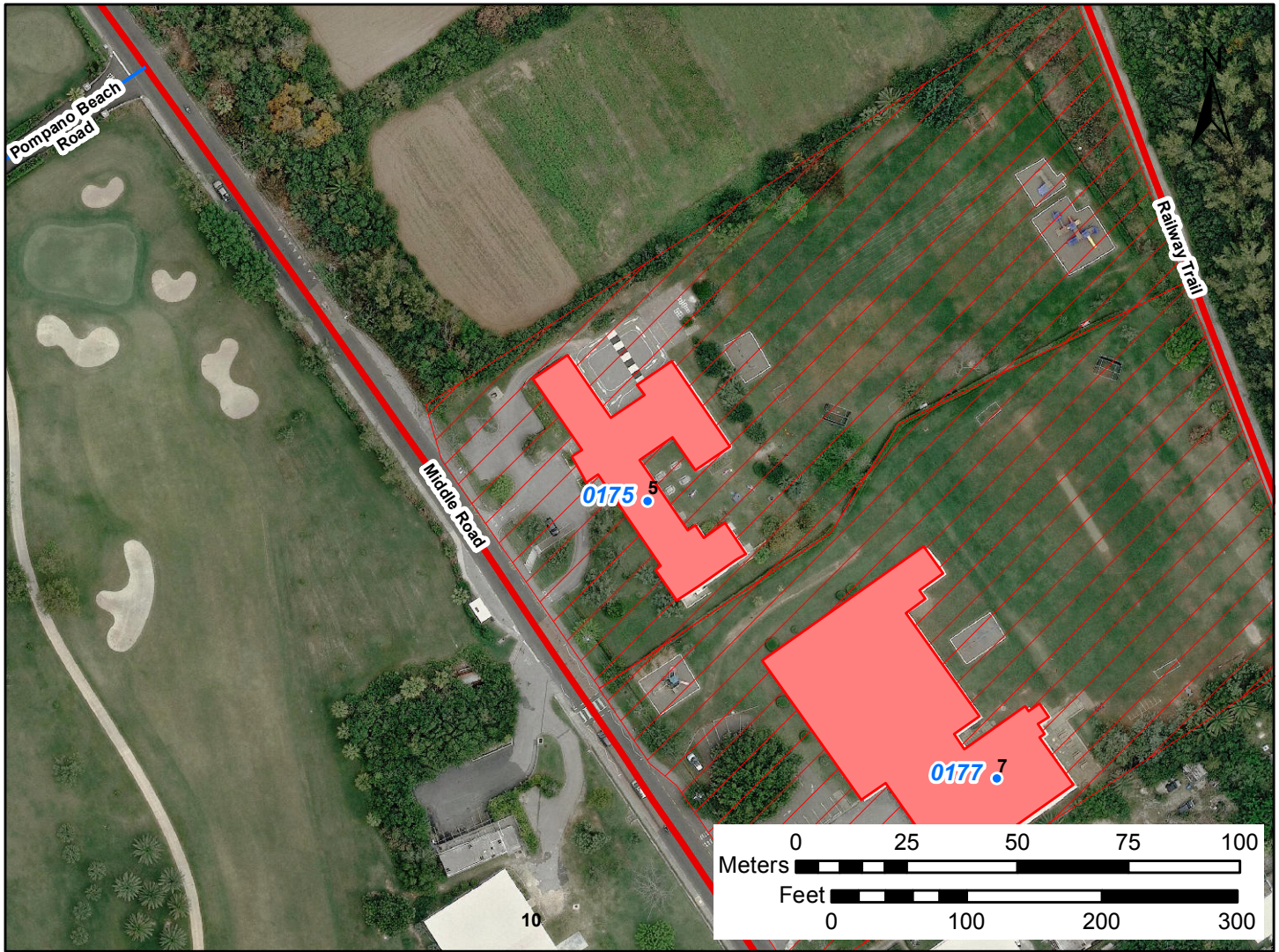
Approximate Land Area: 1.429 ha.
 3.532 ac.

Legend

- | | | |
|------------------------------------|----------------------|----------------------------|
| Government Maintained Schools | Corp. of Hamilton | Public Highway |
| Land Occupied by Government School | Private (Government) | Public (Corp. St. Georges) |
| un-named | Private Island | Railway Trail |
| Corp. St. Georges | Private Estate | WEDCo |
| | | BLDC |



SITE PLAN



Southampton Pre School

Estates Reference #: **S0053**

Address: 5 Middle Road, Southampton, SB 02

School Type: **Pre-School**

Areas

Total Building Footprint: 994 sq.m
 10,695 sq.ft

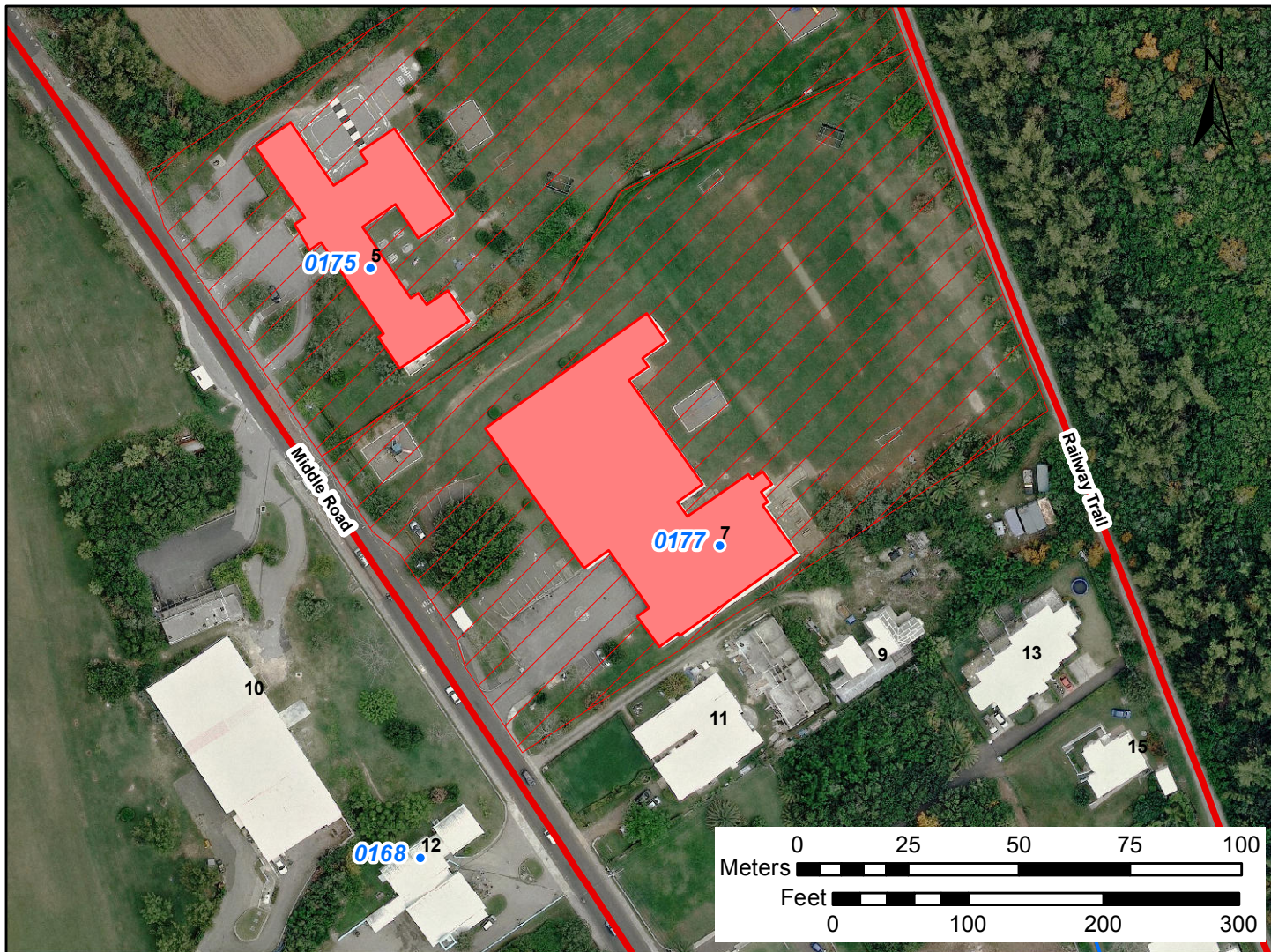
Approximate Land Area: 1.166 ha.
 2.882 ac.

Legend

- | | | |
|------------------------------------|----------------------|----------------------------|
| Government Maintained Schools | Corp. of Hamilton | Public Highway |
| Land Occupied by Government School | Private (Government) | Public (Corp. St. Georges) |
| un-named | Private Island | Railway Trail |
| Corp. St. Georges | Private Estate | WEDCo |
| | | BLDC |



SITE PLAN



Dalton E Tucker Primary School

Estates Reference #: **S0055**

Address: 7 Middle Road, Southampton, SB 02

School Type: **Primary School**

Areas

Total Building Footprint: 2,194 sq.m
 23,621 sq.ft

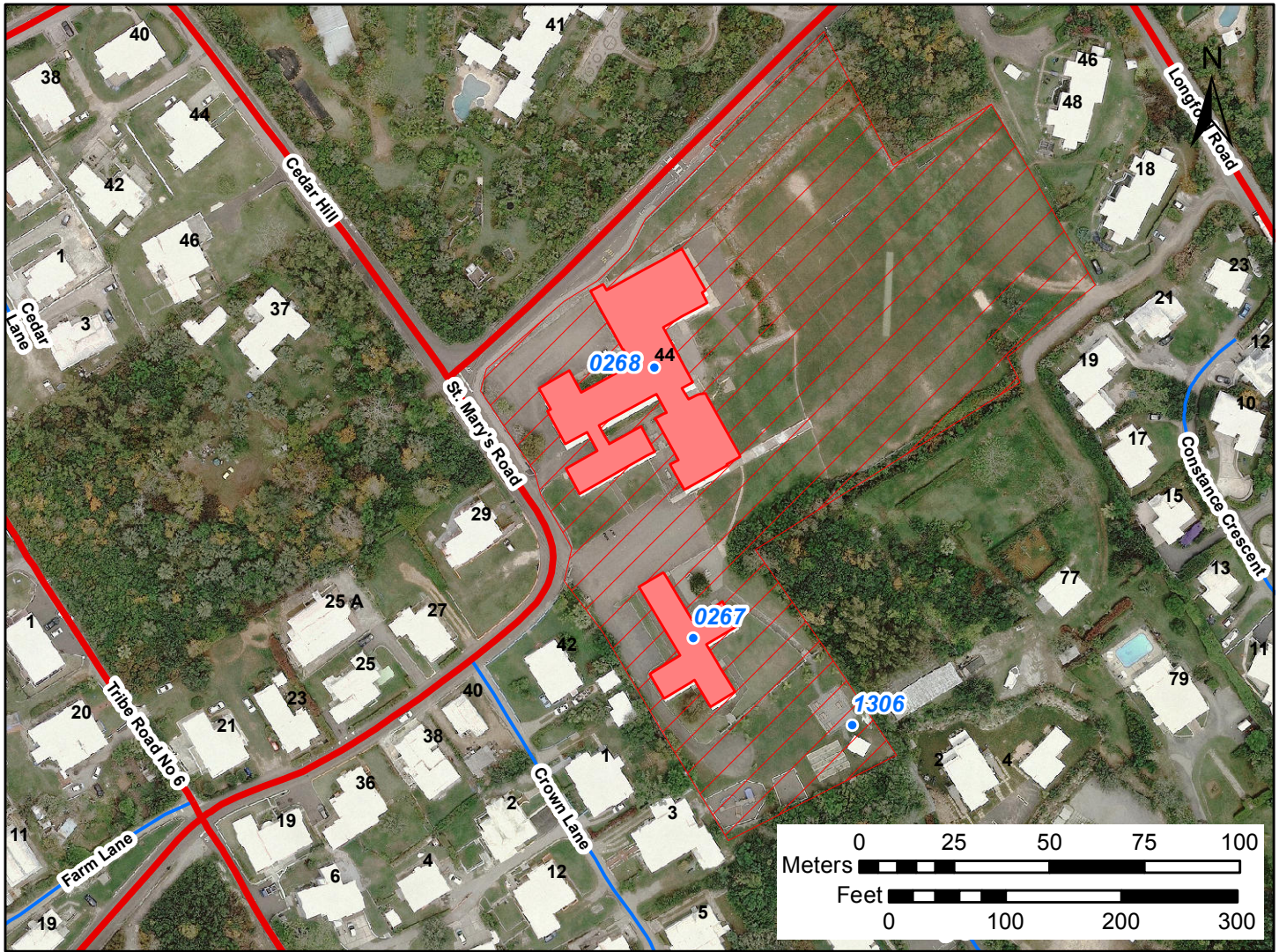
Approximate Land Area: 1.291 ha.
 3.189 ac.

Legend

- | | | |
|------------------------------------|----------------------|----------------------------|
| Government Maintained Schools | Corp. of Hamilton | Public Highway |
| Land Occupied by Government School | Private (Government) | Public (Corp. St. Georges) |
| un-named | Private Island | Railway Trail |
| Corp. St. Georges | Private Estate | WEDCo |
| | | BLDC |



SITE PLAN



Purvis Primary School

Estates Reference #: **S0204**

Address: 44 St Mary's Road, Warwick, WK 06

School Type: **Primary School**

Areas

Total Building Footprint: 1,864 sq.m
 20,065 sq.ft

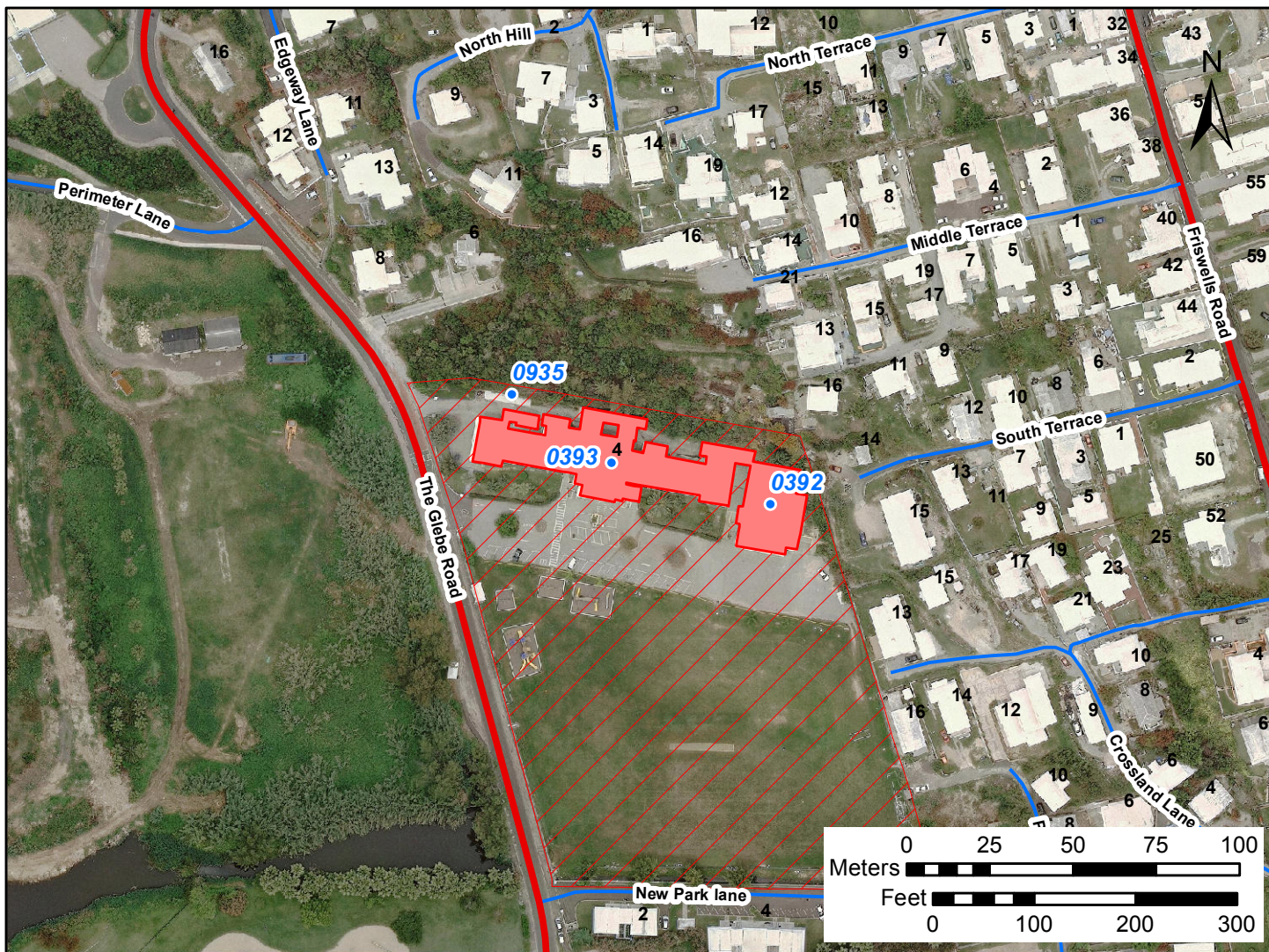
Approximate Land Area: 1.594 ha.
 3.939 ac.

Legend

- | | | |
|------------------------------------|----------------------|----------------------------|
| Government Maintained Schools | Corp. of Hamilton | Public Highway |
| Land Occupied by Government School | Private (Government) | Public (Corp. St. Georges) |
| un-named | Private Island | Railway Trail |
| Corp. St. Georges | Private Estate | WEDCo |
| | | BLDC |



SITE PLAN



Victor Scott Primary School

Estates Reference #: **S0353**

Address: 4 Glebe Road, Pembroke,


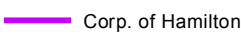


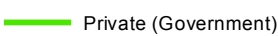

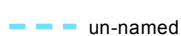


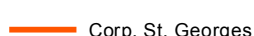

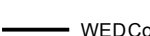

School Type: **Primary School**

Areas

Total Building Footprint: 1,740 sq.m
 18,734 sq.ft

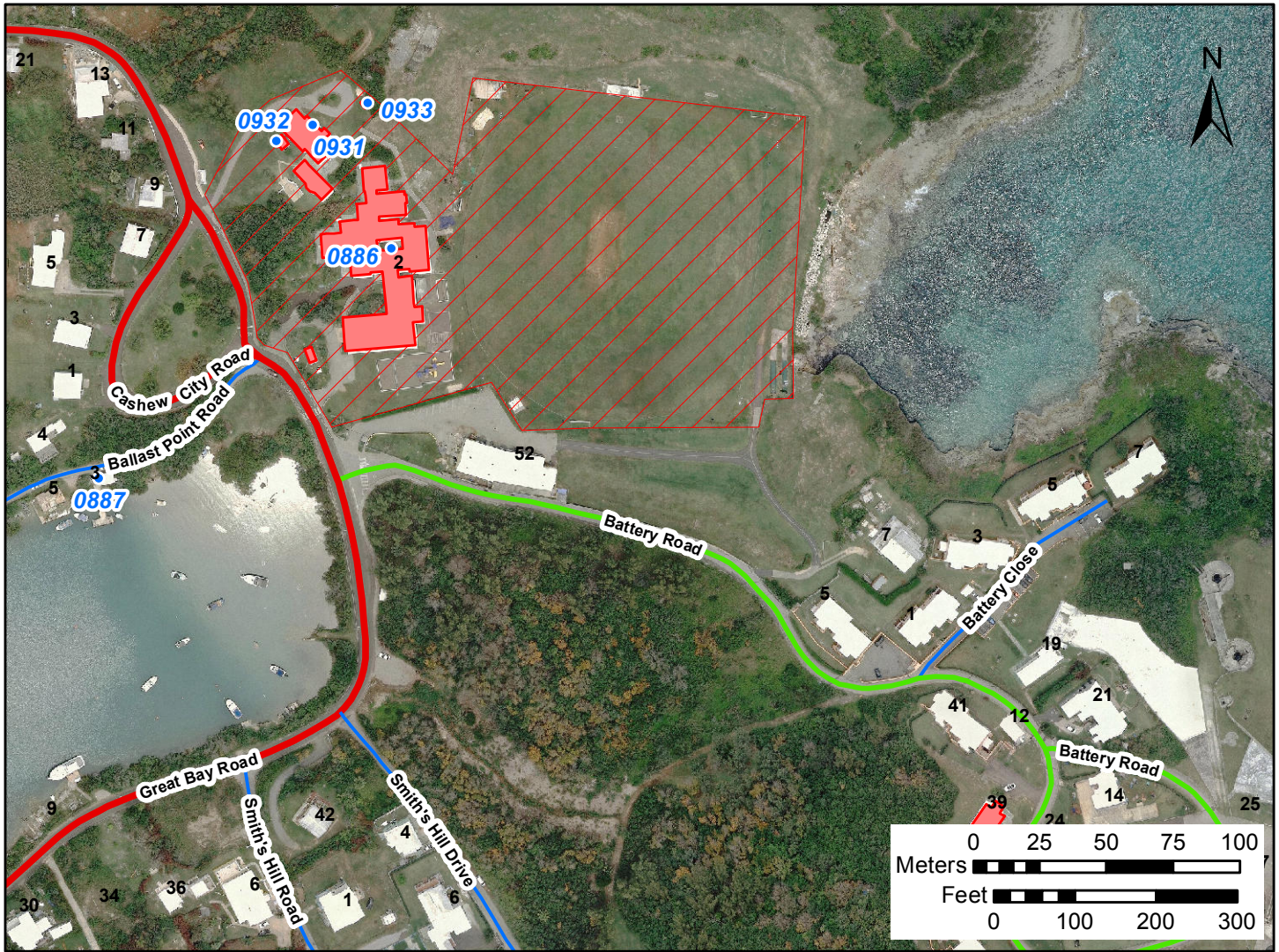
Approximate Land Area: 1.653 ha.
 4.084 ac.

Legend

- | | | |
|--|---|--|
|  Government Maintained Schools |  Corp. of Hamilton |  Public Highway |
|  Land Occupied by Government School |  Private (Government) |  Public (Corp. St. Georges) |
|  un-named |  Private Island |  Railway Trail |
|  Corp. St. Georges |  Private Estate |  WEDCo |
| | |  BLDC |



SITE PLAN



St David's Primary School and Pre School

Estates Reference #: **S0491**

Address: 2 Cashew City Road, St. David's,

School Type: **Primary School**

Areas

Total Building Footprint: 1,861 sq.m
 20,026 sq.ft

Approximate Land Area: 2.429 ha.
 6.001 ac.

Legend

- | | | |
|------------------------------------|----------------------|----------------------------|
| Government Maintained Schools | Corp. of Hamilton | Public Highway |
| Land Occupied by Government School | Private (Government) | Public (Corp. St. Georges) |
| un-named | Private Island | Railway Trail |
| Corp. St. Georges | Private Estate | WEDCo |
| | | BLDC |