

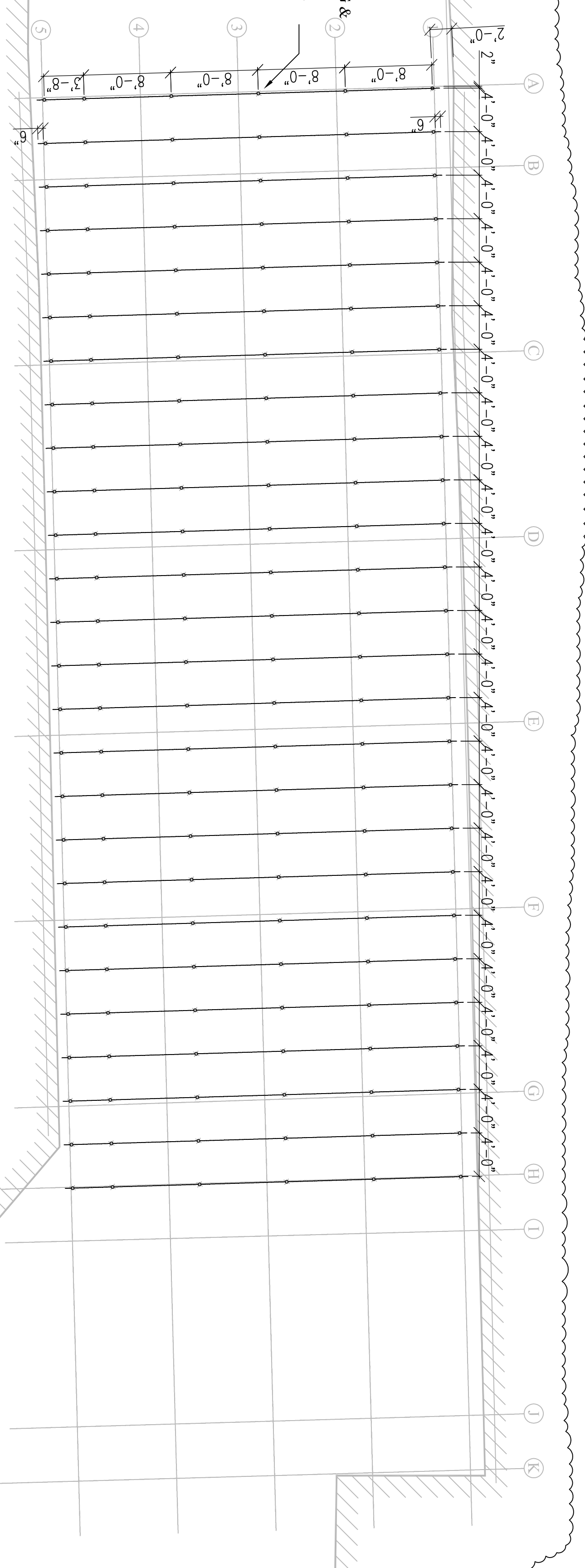
**1** BAFFLES SUPPORT – STRUCTURAL  
SCALE: 1/8" = 1'-0"

BEAM	LENGTH
B	46'-6"
C	46'-6"
D	46'-6"
E	46'-6"
F	46'-6"
G	46'-6"
H	46'-6"
I	42'-0"
J	42'-0"

NOTE:  
 • CONTRACTOR IS RESPONSIBLE TO  
 ALL BEAM LENGTHS REQUIRED  
 INSURE ALL BEAM LENGTHS  
 INCLUDE 2" BEARING EACH SIDE

COORDINATION NOTE:  
 • FLOOR SLAB & BAFFLE SUPPORT STRUCTURE,  
 GENERALLY TO BE PARALLEL TO THE NORTH EAST  
 WALL OF THE MOAT.

SHOOTING BAFFLE COVERED AREA,  
 INSTALL P5500 UNISTRUT 18'-6" LONG &  
 BUTT WELD @ GRID 3. SUPPORT  
 BOLTED TO TOP OF W6x15# BEAMS @  
 4'-0" c/c SPACING & WITH 6" OVER  
 HANG. SHOOTING BAFFLES SIZE  
 4'-0"x8'-0" (9p) WITH HANGERS @  
 8'-0"x4'-0" c/c.



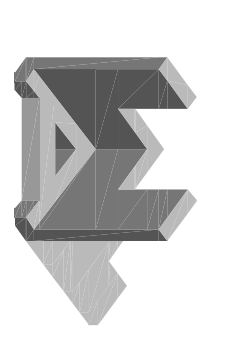
**2** BAFFLES UNISTRUT SUPPORT  
SCALE: 1/8" = 1'-0"



No.	DATE	BY	REVISION
A	FEB 17	VPR	NEW BAFFLE SUPPORT STRUCTURAL Dwg.
B	MAR 17	VPR	COORDINATION
1	AUG 17	VPR	REVISED NOTE
2	AUG 17	VPR	ADD UNISTRUT BAFFLE SUPPORT DETAIL

PROJECT: BERMDA POLICE SERVICE  
 NEW GUN RANGE  
 FORT PROSPECT

TITLE: STRUCTURAL  
 BAFFLE SUPPORT SAFETY CEILING  
 & ROOF BULLET CATCH AREA



**Woodbourne**  
 ASSOCIATES LTD  
 P.O. BOX HM 934, HAMILTON,  
 HM DX, BERMUDA  
 TEL: 441-295-0319 FAX: 441-292-3784