



GOVERNMENT OF BERMUDA
Ministry of Health

SURVEILLANCE SUMMARY REPORT

2025:
EPIDEMIOLOGICAL WEEKS 21-24: 18 MAY 2025 – 14 JUNE 2025

The Surveillance Summary Report contains information on syndromes and communicable diseases reported into the Epidemiology and Surveillance Unit by Epidemiological Week (or as otherwise indicated). The Report currently contains 3 sections:

1. [Syndromic Surveillance](#)
2. [Conditions of Interest](#) – Influenza, COVID-19, and SARI (Severe Acute Respiratory Infection)
3. [Routine Communicable Disease Surveillance](#)

REPORT BASED ON DATA RECEIVED IN THE EPIDEMIOLOGY AND SURVEILLANCE UNIT BY 18 JUNE 2025

Syndromic Surveillance

Syndromic surveillance is the analysis of health-related data to detect or anticipate disease outbreaks. Action on an increase or alert in the reported syndromes under surveillance could potentially stop or slow the spread of the outbreak. The syndromes under surveillance are as follows:

Acute Flaccid Paralysis (AFP): Acute (sudden) onset of flaccid paralysis in the absence of trauma. *Any patient in whom a healthcare worker suspects acute flaccid paralysis is considered to be a suspected case of poliomyelitis.*

Fever and Haemorrhagic symptoms: Acute (sudden) onset of fever ($> 38.0^{\circ}\text{C}$ or 100.4°F) in a previously healthy person, presenting with at least one haemorrhagic (bleeding) manifestation with or without jaundice (e.g. purpura, epistaxis, haemoptysis, melena).

Fever and Neurological symptoms (except AFP): Acute (sudden) onset of fever ($> 38.0^{\circ}\text{C}$ or 100.4°F) with or without headache and vomiting in a previously healthy person presenting with at least one of the following signs: meningeal irritation, convulsions, altered consciousness, altered sensory manifestations, paralysis except AFP.

Fever and Rash: Acute (sudden) febrile illness ($> 38.0^{\circ}\text{C}$ or 100.4°F) in a previously healthy person, presenting generalized rash. *Any patient in whom a healthcare worker suspects measles or rubella infection is considered to be a suspected measles/rubella case. These patients generally have fever and generalized rash illnesses.*

Fever and Respiratory Symptoms (Acute Respiratory Infection): Acute (sudden) febrile illness ($> 38.0^{\circ}\text{C}$ or 100.4°F) in a previously healthy person, presenting with cough or sore throat with or without respiratory distress.

Gastroenteritis: Acute (sudden) onset of diarrhoea, with or without fever ($> 38^{\circ}\text{C}$ or 100.4°F) and presenting with 3 or more loose or watery stools in the past 24 hours, with or without dehydration, vomiting and/or visible blood.

Undifferentiated Fever: An acute (sudden) febrile illness ($> 38.0^{\circ}\text{C}$ or 100.4°F) in a previously healthy person of less than 7 days duration with two or more of the following manifestations: headache, retro-orbital pain, myalgia, arthralgia, nausea, vomiting, jaundice – AND without any particular symptoms fitting another syndrome definition.

Reported Syndromes

The data presented in this section reflects reports submitted to the Epidemiology and Surveillance Unit through Bermuda's sentinel surveillance system.

Syndromes reported in EWs 21-24 included Fever and Neurological (guillain barre syndrome, meningitis, meningoencephalitis), Fever and Rash (coxsackievirus), Fever and Respiratory (common cold, coronavirus "seasonal", COVID-19, human metapneumovirus, influenza, mycoplasma pneumoniae, parainfluenza, strep throat, streptococcus pneumoniae) Gastroenteritis (c.difficile, campylobacter, e.coli, norovirus, rotavirus).

Alert levels are used to identify potential public health risks. A risk assessment will determine the need for any public health action.

During EWs 21-24, there were alerts for Fever and Neurological Symptoms, Fever and Rash, and Gastroenteritis.

Epidemiological Week 21

Syndrome	# of Reported Cases	5-Yr Average*	Medium Alert Threshold**	High Alert Threshold***	Alert Level
Acute Flaccid Paralysis	0	0	0	0	LOW
Fever and Haemorrhagic Symptoms	0	0	0	0	LOW
Fever and Neurological Symptoms	0	0	0	0	LOW
Fever and Rash	0	0	1	2	LOW
Fever and Respiratory Symptoms (under 5 years)	5	3	7	15	LOW
Fever and Respiratory Symptoms (5 years and older)	18	29	56	111	LOW
Gastroenteritis (under 5 years)	1	1	2	3	LOW
Gastroenteritis (5 years and older)	4	5	8	15	LOW
Undifferentiated Fever (under 5 years)	0	0	0	1	LOW
Undifferentiated Fever (5 years and older)	0	0	0	1	LOW
% of sentinel sites reporting	92.86%				

Epidemiological Week 22

Syndrome	# of Reported Cases	5-Yr Average*	Medium Alert Threshold**	High Alert Threshold***	Alert Level
Acute Flaccid Paralysis	0	0	0	0	LOW
Fever and Haemorrhagic Symptoms	0	0	0	0	LOW
Fever and Neurological Symptoms	2	0	0	0	HIGH
Fever and Rash	0	0	1	3	LOW
Fever and Respiratory Symptoms (under 5 years)	1	4	7	15	LOW
Fever and Respiratory Symptoms (5 years and older)	14	29	57	113	LOW
Gastroenteritis (under 5 years)	1	1	1	3	LOW
Gastroenteritis (5 years and older)	9	5	8	14	MEDIUM
Undifferentiated Fever (under 5 years)	0	0	0	1	LOW
Undifferentiated Fever (5 years and older)	0	0	0	1	LOW
% of sentinel sites reporting	92.86%				

Epidemiological Week 23

Syndrome	# of Reported Cases	5-Yr Average*	Medium Alert Threshold**	High Alert Threshold***	Alert Level
Acute Flaccid Paralysis	0	0	0	0	LOW
Fever and Haemorrhagic Symptoms	0	0	0	0	LOW
Fever and Neurological Symptoms	0	0	0	0	LOW
Fever and Rash	0	0	1	2	LOW
Fever and Respiratory Symptoms (under 5 years)	2	3	7	15	LOW
Fever and Respiratory Symptoms (5 years and older)	30	30	60	118	LOW
Gastroenteritis (under 5 years)	1	1	2	4	LOW
Gastroenteritis (5 years and older)	10	4	8	14	MEDIUM
Undifferentiated Fever (under 5 years)	0	0	0	0	LOW
Undifferentiated Fever (5 years and older)	0	0	0	0	LOW
% of sentinel sites reporting	92.86%				

Epidemiological Week 24

Syndrome	# of Reported Cases	5-Yr Average*	Medium Alert Threshold**	High Alert Threshold***	Alert Level
Acute Flaccid Paralysis	0	0	0	0	LOW
Fever and Haemorrhagic Symptoms	0	0	0	0	LOW
Fever and Neurological Symptoms	1	0	0	0	HIGH
Fever and Rash	2	0	1	2	HIGH
Fever and Respiratory Symptoms (under 5 years)	5	3	6	13	LOW
Fever and Respiratory Symptoms (5 years and older)	18	34	67	133	LOW
Gastroenteritis (under 5 years)	0	1	2	4	LOW
Gastroenteritis (5 years and older)	4	5	8	14	LOW
Undifferentiated Fever (under 5 years)	0	0	0	0	LOW
Undifferentiated Fever (5 years and older)	0	0	0	0	LOW
% of sentinel sites reporting	92.86%				

4-Week Summary: Epidemiological Weeks 21-24

Syndrome	# of Reported Cases	5-Yr Average	Medium Alert Threshold**	High Alert Threshold***	Alert Level
Acute Flaccid Paralysis	0	0	0	0	LOW
Fever and Haemorrhagic Symptoms	0	0	0	0	LOW
Fever and Neurological Symptoms	3	0	0	0	HIGH
Fever and Rash	2	1	4	9	LOW
Fever and Respiratory Symptoms (under 5 years)	13	13	28	58	LOW
Fever and Respiratory Symptoms (5 years and older)	80	122	240	476	LOW
Gastroenteritis (under 5 years)	3	3	7	14	LOW
Gastroenteritis (5 years and older)	27	18	32	58	LOW
Undifferentiated Fever (under 5 years)	0	0	0	1	LOW
Undifferentiated Fever (5 years and older)	0	0	1	3	LOW

Cumulative Summary: Epidemiological Weeks 1-24

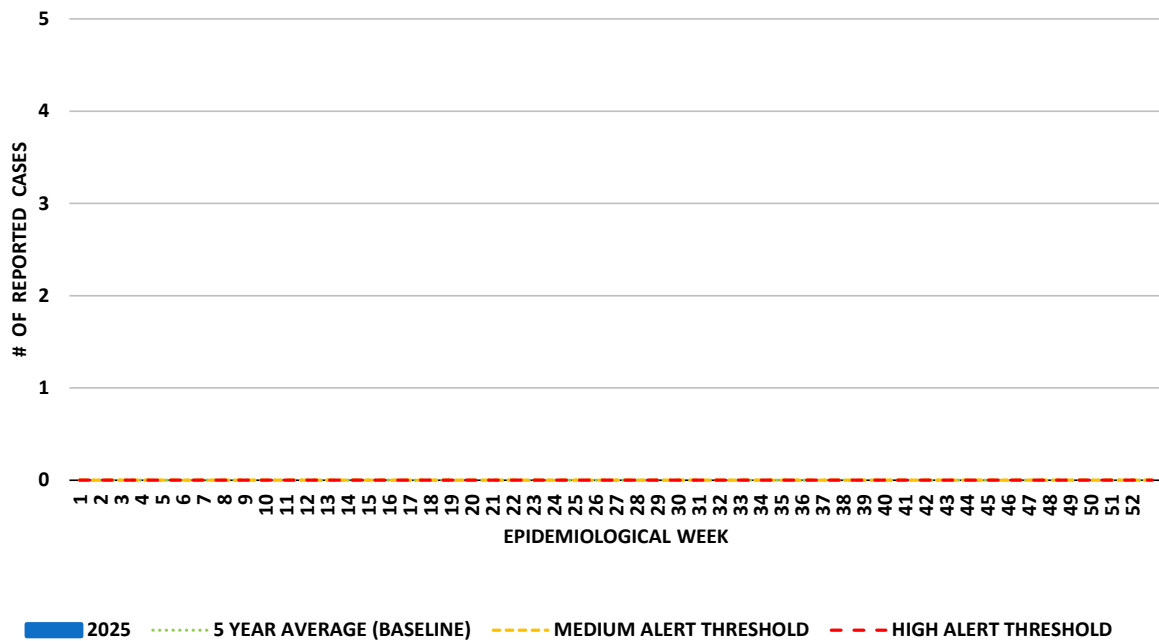
Syndrome	# of Reported Cases	5-Yr Average	Medium Alert Threshold**	High Alert Threshold***	Alert Level
Acute Flaccid Paralysis	0	0	0	0	LOW
Fever and Haemorrhagic Symptoms	0	0	1	3	LOW
Fever and Neurological Symptoms	5	1	3	8	MEDIUM
Fever and Rash	18	11	31	72	LOW
Fever and Respiratory Symptoms (under 5 years)	130	100	200	399	LOW
Fever and Respiratory Symptoms (5 years and older)	780	880	1574	2962	LOW
Gastroenteritis (under 5 years)	16	16	40	88	LOW
Gastroenteritis (5 years and older)	104	85	150	279	LOW
Undifferentiated Fever (under 5 years)	0	1	6	16	LOW
Undifferentiated Fever (5 years and older)	0	1	4	11	LOW

*5-Yr Average calculated by summing the incidence counts for the current week, the 2 weeks preceding the current week, and the 2 weeks following the current week, for a total of 5 preceding years.

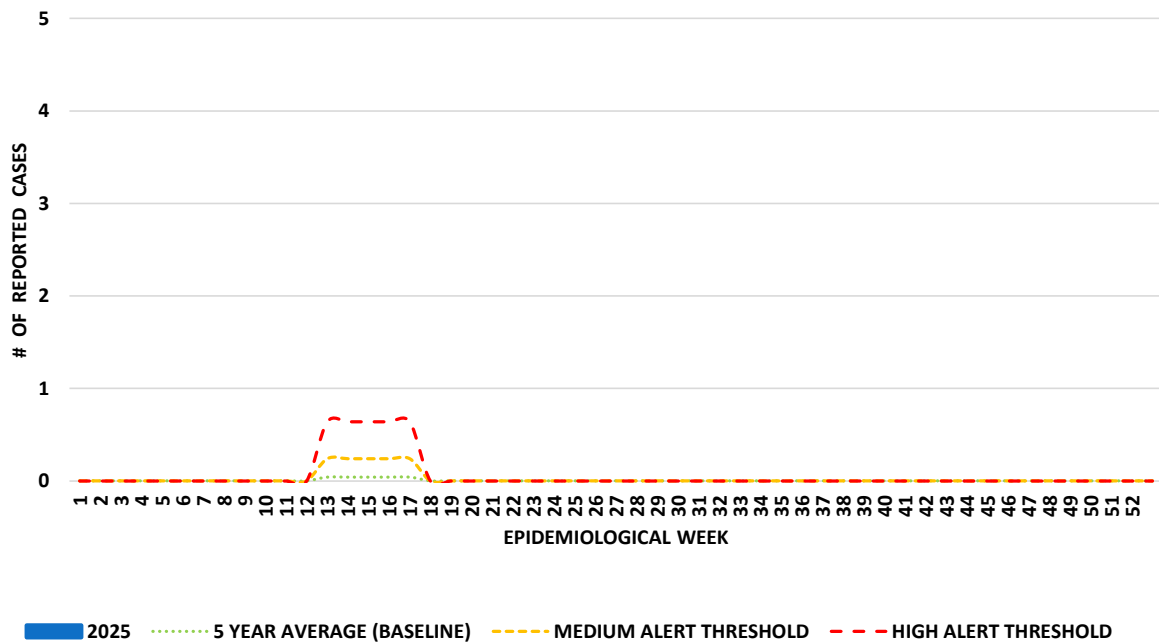
** Medium Alert Threshold is set at 1 standard deviation above 5-yr average

*** High Alert Threshold is set at 3 standard deviations above 5-year average

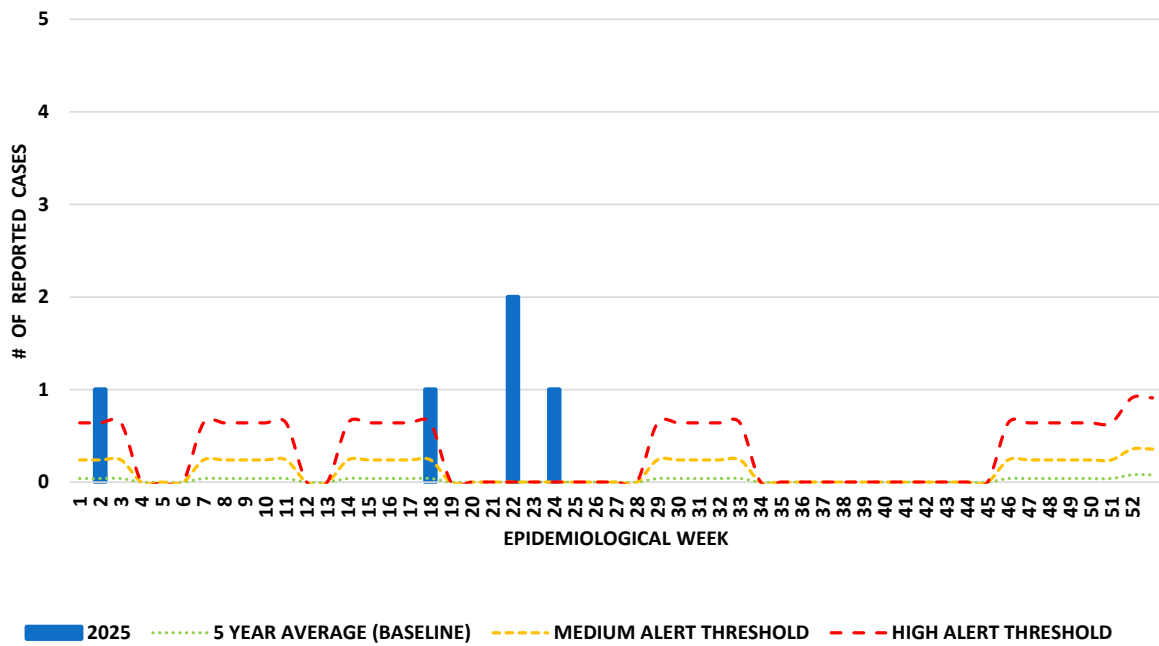
ACUTE FLACCID PARALYSIS



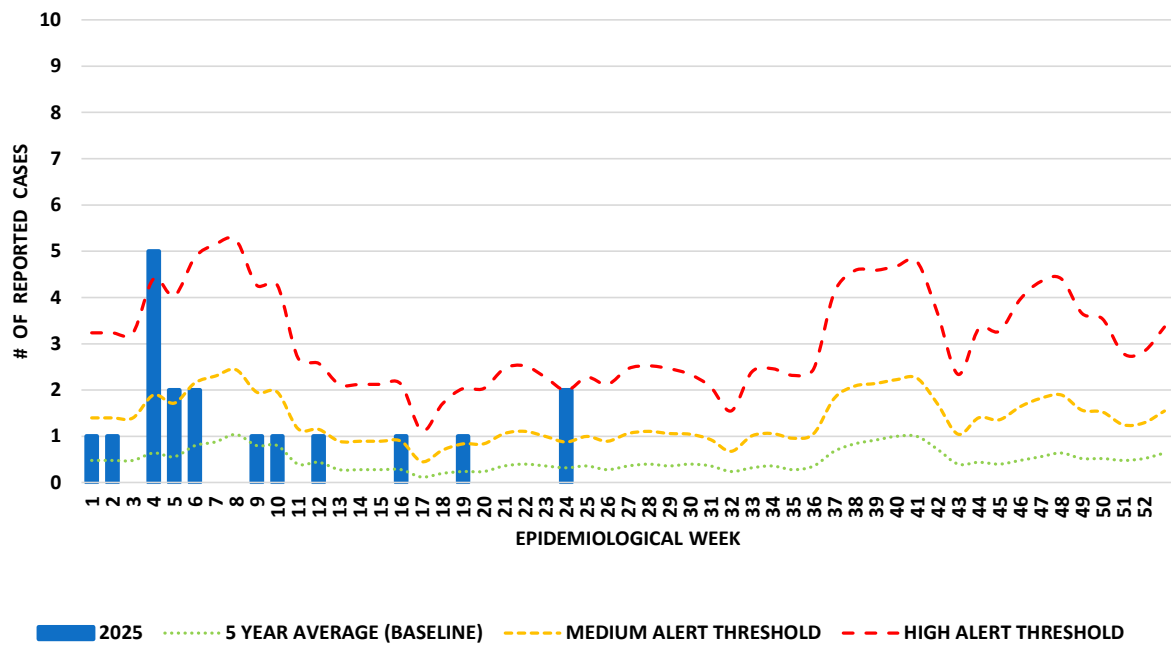
FEVER AND HAEMORRHAGIC SYMPTOMS



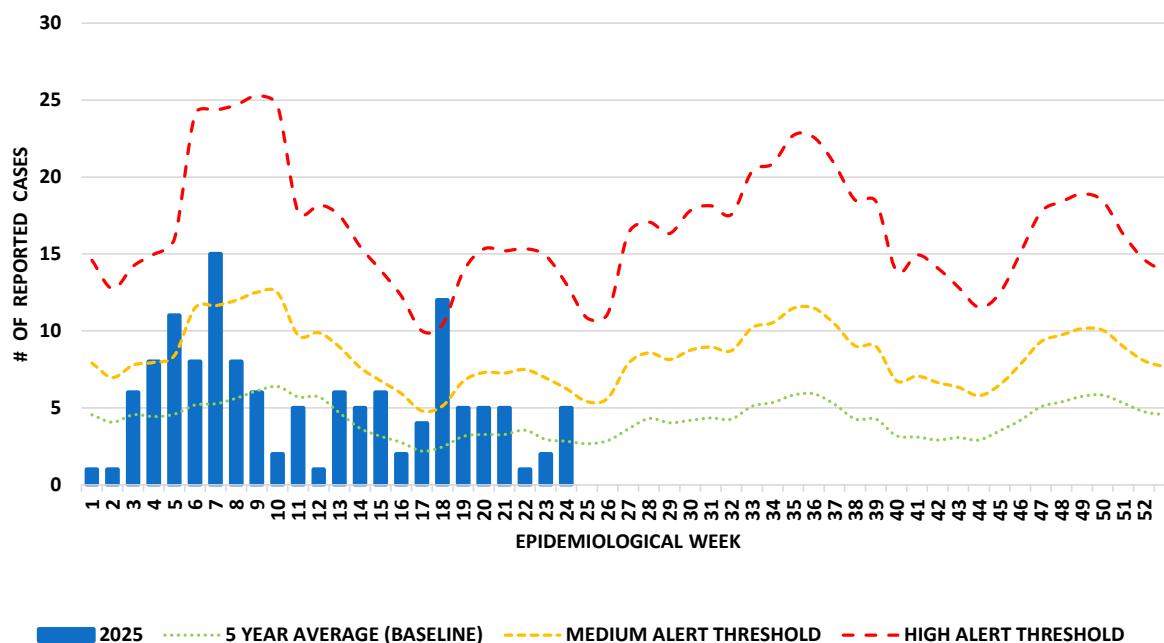
FEVER AND NEUROLOGICAL SYMPTOMS



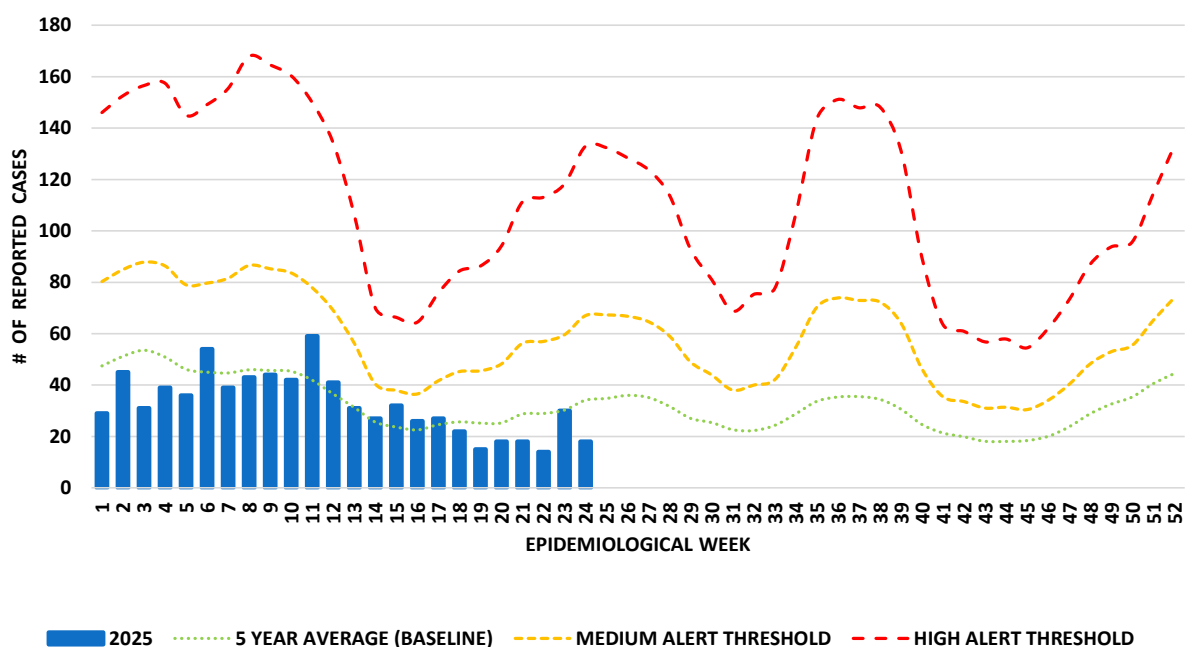
FEVER AND RASH



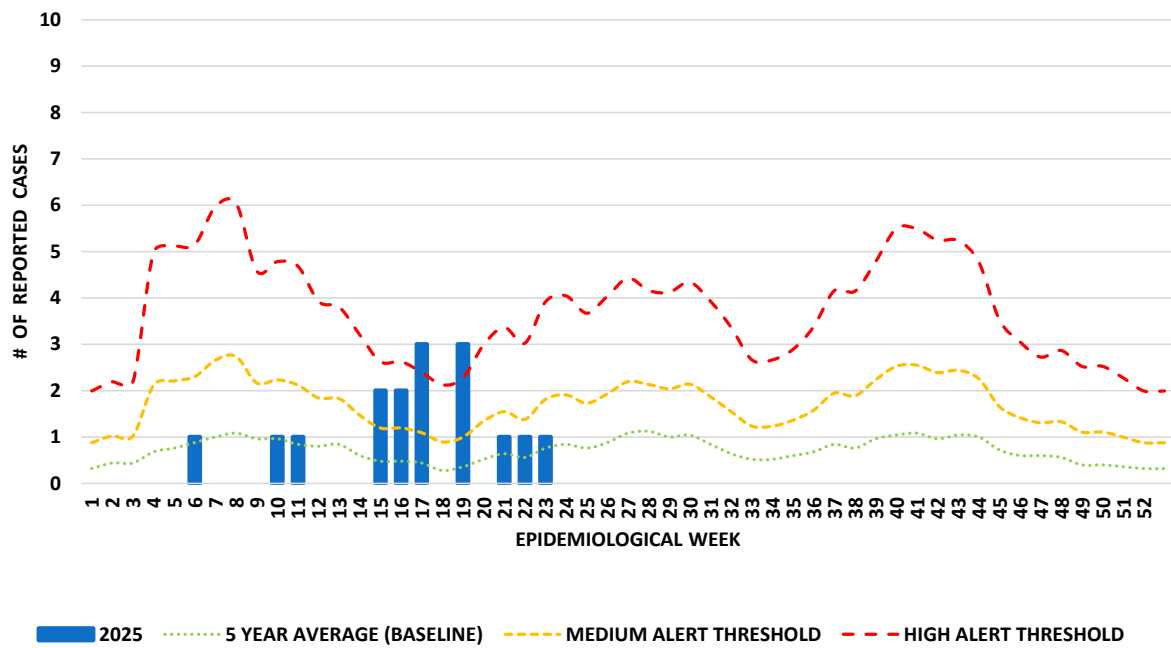
FEVER AND RESPIRATORY SYMPTOMS IN PERSONS AGED UNDER 5 YEARS



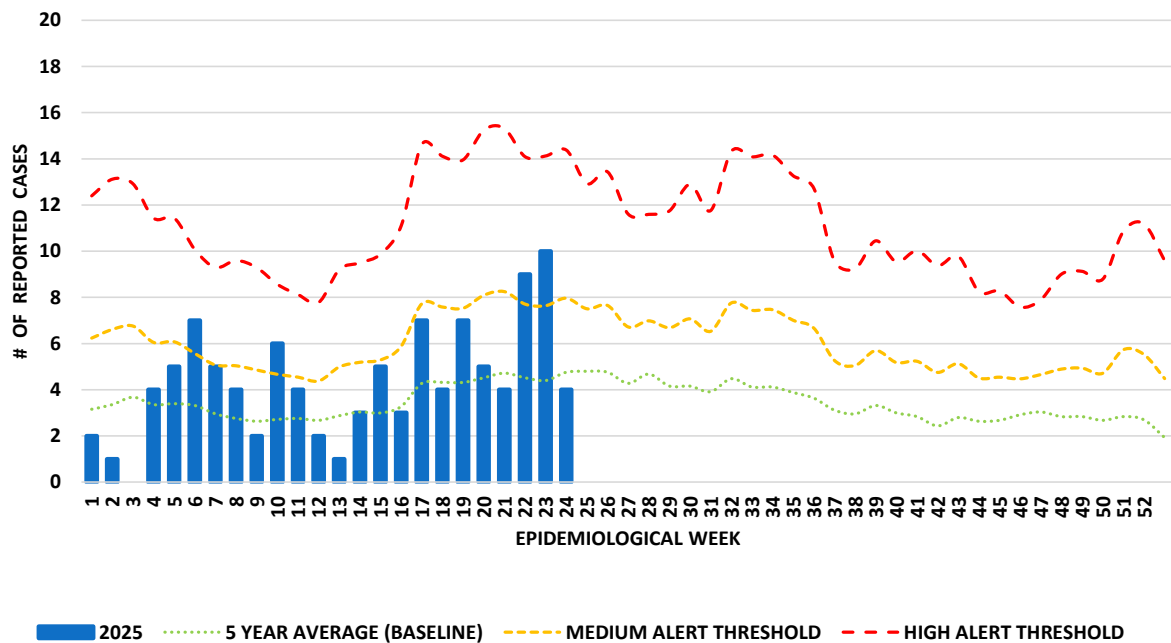
FEVER AND RESPIRATORY SYMPTOMS IN PERSONS AGED 5 YEARS AND OLDER



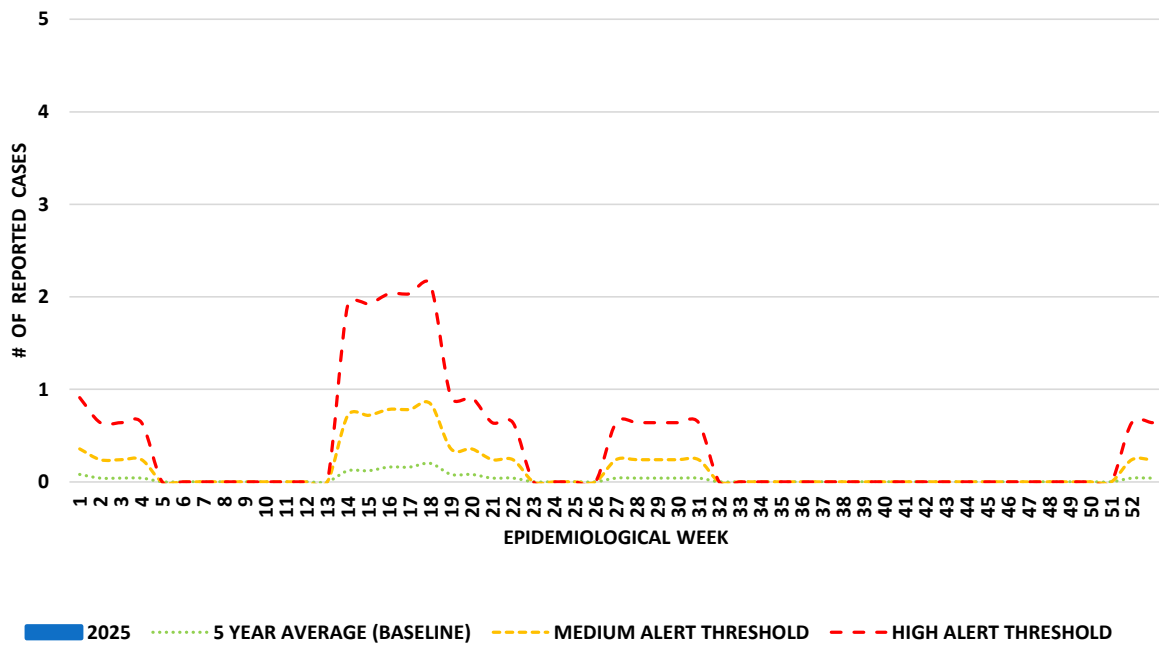
GASTROENTERITIS IN PERSONS AGED UNDER 5 YEARS



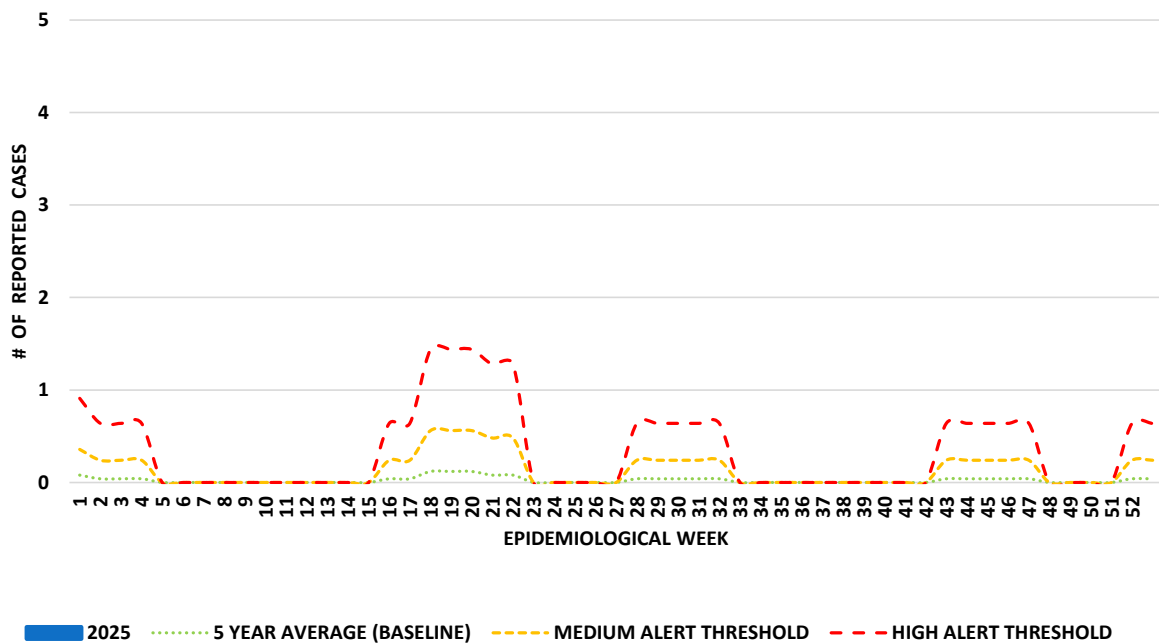
GASTROENTERITIS IN PERSONS AGED 5 YEARS AND OLDER



UNDIFFERENTIATED FEVER IN PERSONS AGED UNDER 5 YEARS



UNDIFFERENTIATED FEVER IN PERSONS AGED 5 YEARS AND OLDER



Conditions of Interest:

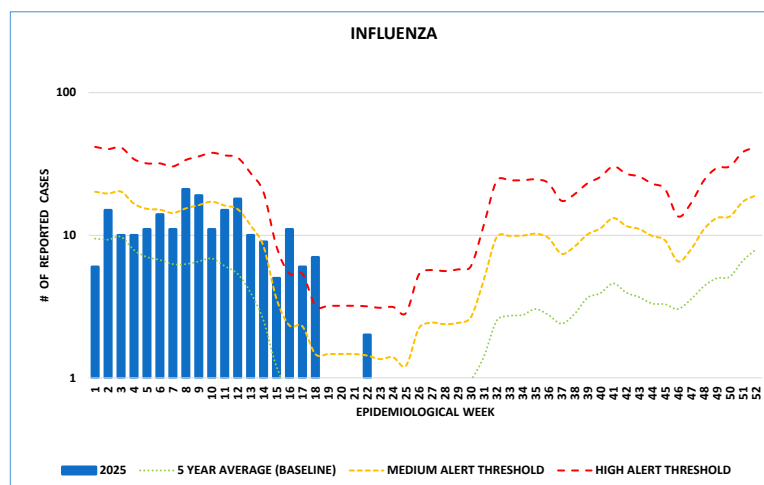
Influenza, COVID-19, and Severe Acute Respiratory Infection (SARI)

Note: Each condition in this section is displayed using a logarithmic (log) scale. This improves visualization by allowing clearer interpretation of week-to-week changes, especially when case counts, including historical data, vary across a wide range. Surveillance case definitions included accompany each graph.

Influenza:

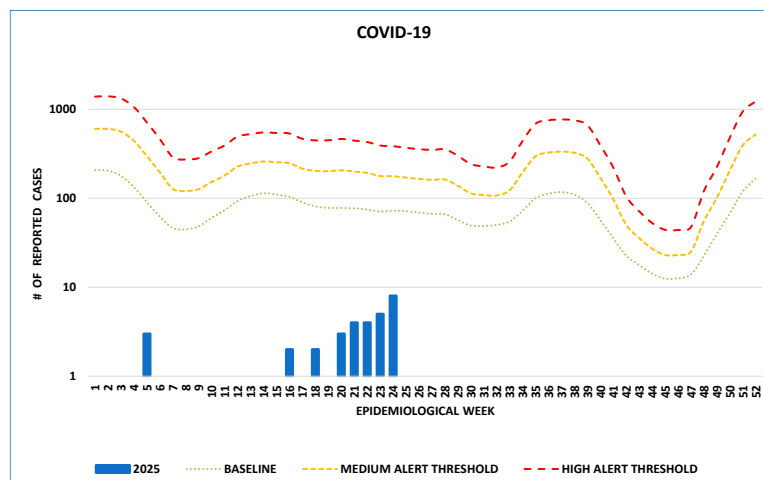
Clinical (or suspect): A person with fever, headache, myalgia, and cough

Laboratory confirmed: A clinical or suspect case with positive laboratory findings



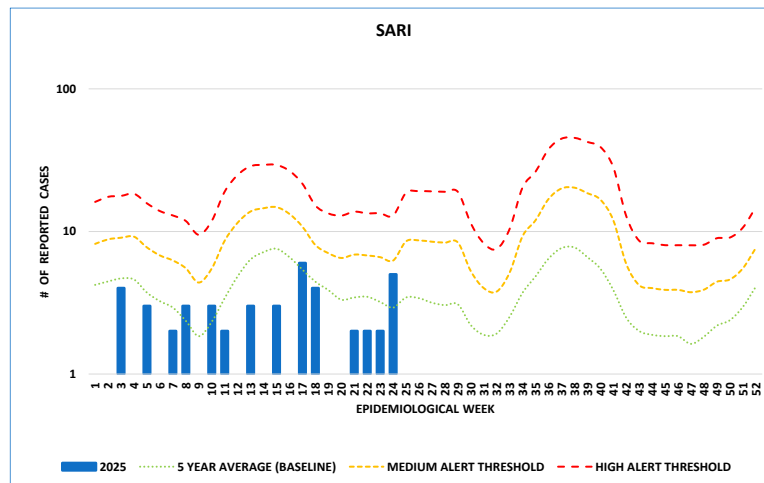
COVID-19:

A person with laboratory or antigen test confirmation of COVID-19 infection, irrespective of clinical signs and symptoms



Severe Acute Respiratory Infection (SARI):

An acute respiratory infection with history of fever or measured fever of $\geq 38^{\circ}\text{C}$ and cough, with onset within the last 10 days, and requiring hospitalization.



Summary

Influenza activity remained low throughout EWs 21 to 24. After registering 1 case in EW 21 and 2 cases in EW 22, there were no influenza cases reported in EWs 23 or 24. This sustained low activity supports the observation that the seasonal influenza period may have concluded in the preceding weeks.

COVID-19 cases showed a steady upward trend during this period. Weekly counts rose from 1 case in EW 21 to 2 in EW 22, 5 in EW 23, and 8 in EW 24. This rise suggests a possible increase in community transmission.

SARI (Severe Acute Respiratory Infection) activity was stable at low levels for three weeks, followed by an increase in EW 24. There were 2 cases reported each week from EWs 21 to 23, rising to 5 cases in EW 24. This increase may indicate an increase in severe respiratory illness activity.

Routine Communicable Disease Surveillance (EWs 21-24 2025)

An observed increase in confirmed diseases may not necessarily indicate a true increase in disease incidence. Such increases may result from factors like enhanced diagnostic capacity, improved access to confirmatory testing, or heightened awareness of circulating diseases—both locally and globally.

In instances where the relative level is above normal (indicated in red), further epidemiological investigation may be conducted to determine if there are clusters of illness or outbreaks occurring. This is dependent on many factors, including the severity of the illness, the potential for spread, and the availability of control measures.

DISEASES/PATHOGENS	Cumulative Total (Lab Conf. cases)	
	Curr. Yr	Last Yr.
Diseases Reportable under the International Health Regulations		
Cholera	0	0
Human Influenza (new sub-type)	0	0
Pneumonic Plague	0	0
Poliomyelitis	0	0
Severe Acute Respiratory Syndrome (SARS)	0	0
Yellow Fever	0	0
Air Borne Diseases		
Adenoviruses	14	53
COVID-19	39	226
Human Metapneumovirus [hMPV]	48	22
Influenza	224	160
Respiratory Syncytial Virus [RSV]	108	36
Tuberculosis - Extrapulmonary	0	0
Tuberculosis - Pulmonary	1	1
Vaccine Preventable Diseases under the Caribbean Expanded Programme on Immunization		
Chicken Pox [Varicella] (clinically confirmed)	7	8
Diphtheria	0	0
Measles	0	0
Meningitis [due to <i>Haemophilus influenzae</i>]	0	0
Meningitis [due to <i>Streptococcus pneumoniae</i>]	0	0
Meningococcal Infection [due to <i>Neisseria meningitidis</i>]	0	0
Mumps	0	0
Pertussis [Whooping Cough]	2	2
Pneumonia [due to <i>Haemophilus influenzae</i>]	0	0
Pneumonia [due to <i>Streptococcus pneumoniae</i>]	0	1
Rotavirus	9	1
Rubella [Congenital German Measles]	0	0
Rubella [German Measles]	0	0
Tetanus [excluding Neonatal]	0	0
Tetanus Neonatorum	0	0
Vector Borne Diseases		
Chagas Diseases	0	0
Chikungunya	0	0
Dengue Fever	0	0
Dengue Haemorrhagic Fever/Shock Syndrome	0	0
Leptospirosis	1	0
Malaria	0	0
Zika	0	0
Food and Water Borne Pathogens		
<i>Campylobacter</i>	15	14
Ciguatera Poisoning (clinically confirmed)	0	0
<i>Cryptosporidium</i>	0	3
<i>E. Coli</i> (pathogenic)	22	25
<i>Giardia</i>	0	2
Hepatitis A	1	0
Listeria	0	0
Norovirus	6	6
Salmonella	7	17
Shigella	1	2
<i>Staphylococcus</i> (pathogenic)	0	0
<i>Toxoplasma</i>	0	0
Typhoid and Paratyphoid	0	0
<i>Vibrio</i> (excluding Cholera)	0	1
Other Diseases		
Viral Encephalitis/Meningitis	0	0
Hepatitis B	2	1
Hepatitis C	4	3
Leprosy (Hansens Disease)	0	0
Meningitis/Encephalitis (not specified)	3	0
Rabies (in Humans)	0	0
Specific Diseases under Country Surveillance		
Chlamydia	123	120
Gonorrhoea	7	14
Herpes	6	24
Syphilis	3	2

EPIDEMIOLOGICAL WEEKS 2025

WEEK	FROM	TO
1	29-Dec-24	4-Jan-25
2	5-Jan-25	11-Jan-2025
3	12-Jan-25	18-Jan-25
4	19-Jan-25	25-Jan-25
5	26-Jan-25	01-Feb-25
6	02-Feb-25	08-Feb-25
7	09-Feb-25	15-Feb-25
8	16-Feb-25	22-Feb-25
9	23-Feb-25	01-Mar-25
10	02-Mar-25	08-Mar-25
11	09-Mar-25	15-Mar-25
12	16-Mar-25	22-Mar-25
13	23-Mar-25	29-Mar-25
14	30-Mar-25	05-Apr-25
15	06-Apr-25	12-Apr-25
16	13-Apr-25	19-Apr-25
17	20-Apr-25	26-Apr-25
18	27-Apr-25	03-May-25
19	04-May-25	10-May-25
20	11-May-25	17-May-25
21	18-May-25	24-May-25
22	25-May-25	31-May-25
23	01-Jun-25	07-Jun-25
24	08-Jun-25	14-Jun-25
25	15-Jun-25	21-Jun-25
26	22-Jun-25	28-Jun-25

WEEK	FROM	TO
27	29-Jun-25	05-Jul-25
28	06-Jul-25	12-Jul-25
29	13-Jul-25	19-Jul-25
30	20-Jul-25	26-Jul-25
31	27-Jul-25	02-Aug-25
32	03-Aug-25	09-Aug-25
33	10-Aug-25	16-Aug-25
34	17-Aug-25	23-Aug-25
35	24-Aug-25	30-Aug-25
36	31-Aug-25	06-Sep-25
37	07-Sep-25	13-Sep-25
38	14-Sep-25	20-Sep-25
39	21-Sep-25	27-Sep-25
40	28-Sep-25	04-Oct-25
41	05-Oct-25	11-Oct-25
42	12-Oct-25	18-Oct-25
43	19-Oct-25	25-Oct-25
44	26-Oct-25	01-Nov-25
45	02-Nov-25	08-Nov-25
46	09-Nov-25	15-Nov-25
47	16-Nov-25	22-Nov-25
48	23-Nov-25	29-Nov-25
49	30-Nov-25	06-Dec-25
50	07-Dec-25	13-Dec-25
51	14-Dec-25	20-Dec-25
52	21-Dec-25	27-Dec-25