

Site Name: Warwick Tower
Structure Type: Guyed Tower
Structure Height: 250'
Make: Valmont
ASR: KD48X180
Tower Owner: Government of Bermuda
Address: Middle Road
Parish: Warwick
Latitude: 32.256385
Longitude: -64.833335
Date of Visit: 7/13/2022
Employees on Site: Angie Shyrigh
Ben Shyrigh

Proventus Structural Services, LLC

*Please contact Angie Shyrigh with any questions regarding the content of this report.
(614)312-8107*

Table of Contents

Table of Contents.....	2
Purpose of this Site Visit	3
General Information	4
Elevations.....	4
Leg Orientation.....	4
Summary of Deficiencies Found	5
Access and Compound.....	8
Concrete Foundations.....	9
Structure Condition	10
Finish	11
Lighting	12
Grounding	13
Personnel Safety.....	14
Antennas and Lines	15
Coax Position Diagram.....	15
Loading	16
Guy Wires and Associated Hardware	20
Guy Anchor and Guy Wire Position Codes.....	21
Guy Tension Results	22
Tower Alignment.....	24
Photos.....	25

Proventus Structural Services, LLC

*Please contact Angie Shyrigh with any questions regarding the content of this report.
(614)312-8107*

Purpose of this Site Visit

To fulfill the inspection requirements set forth in the TIA/EIA222-H, Annex J.1 standard for Maintenance and Condition Assessment of communication structures.

Proventus Structural Services, LLC

*Please contact Angie Shyrigh with any questions regarding the content of this report.
(614)312-8107*

General Information

If a manufacturer's plate is installed, record the information here:

Model: KD48X250

Order NO: A123835 1

Elevations

Ground to top of pier pad: 1'

Top of pier pad to top of base plate: 2"

Top of base plate to top of structure: 247' 6"

Tip height of highest appurtenance: 255'

What is the highest appurtenance? Lightning rod extension

Leg Orientation

Legs are labeled in a clockwise fashion with "A leg" as the northernmost leg.

Azimuth of "A leg": 350°

Proventus Structural Services, LLC

*Please contact Angie Shyrigh with any questions regarding the content of this report.
(614)312-8107*

Summary of Deficiencies Found

Elevation	Location	Description	Recommendation	Priority
0'	Tower foundation	Light honeycombing is present on the tower foundation.	Monitor the condition of the concrete for cracking or degradation.	Monitor
248'	AB and CA Faces	Horizontal members are not installed on these faces.	Consult the engineer of record to determine if these horizontals require to be installed.	To be scheduled
Throughout height	Tower surface	The galvanizing is wearing thin and rust is forming, advancing to category 2 in the upper portions. A few isolated regions of pitting rust were observed, and loss of material was undetectable at the time of this inspection.	Paint the tower within 12 months to retard the advancement of corrosion. Ensure attention is paid to surface preparation and complete coverage of all tower surfaces.	To be scheduled
0' - 50'	Varies	Category 2 rust is present on the tower connection bolt assemblies.	It is recommended the bolt assemblies be brushed and treated within 12 months.	To be scheduled
50' - 250'	Varies	Category 3 rust is present on the tower connection bolt assemblies.	It is recommended these bolt assemblies be replaced within 12 months.	To be scheduled
Throughout height	BC Face	The safety cable keepers are degraded beyond functionality, and as a result the safety cable has rubbed the surface of the tower horizontals and worn away the galvanizing.	It is recommended the safety cable be secured and prevented from rubbing the tower.	To be scheduled
125', 249'	Varies	Multiple deficiencies were observed with the old lighting system: <ul style="list-style-type: none"> Advanced, pitting category 3 rust is present on the lighting conduit, junction boxes and hardware securing it to the tower The side light conduit is taped yet broken resulting in the wiring being exposed The side light conduit is not secured to the tower and is instead resting on the diagonals The side light fixtures are upside down The B leg side light lens is broken The C leg lens is entirely missing The old beacon lens is entirely missing	Remove the old lighting system and associated components entirely. Dispose of off-site.	To be scheduled
255'	BC Leg	A lightning rod extension is present; however a lightning rod is not. At the time of the 2013	Install a lightning rod.	To be scheduled

Proventus Structural Services, LLC

Please contact Angie Shyrigh with any questions regarding the content of this report.
(614)312-8107

		inspection the lightning rod was observed to be present.		
Throughout height	Climbing face	Category 3 rust is present on the safety cable and associated components.	It is recommended the safety cable system and associated components be replaced.	To be scheduled
Varies	Varies	Numerous out of service and abandoned pieces of tower mounted equipment were observed.	It is recommended out of service or otherwise abandoned equipment be completely removed from the structure to reduce the resources required to maintain safe connection to the structure as well as to maintain accurate loading records.	To be scheduled
Varies	Varies	The stiff-arm associated with each antenna #16, #62 and #87 is connected to a tower bracing member.	To prevent damage to the bracing member it is recommended the stiff-arm connections be relocated to tower legs.	To be scheduled
206'	C Leg	Electrical tape is currently being used to connect this antenna (#86) to its mount.	Replace the tape with hot dip galvanized brackets.	To be scheduled
Throughout height	Varies	At each guy attachment elevation, category 3 rust was observed on the thimbles and guy wire ends. At the thimbles, loss of material of occurring. Category 2 rust was observed on the shackles and guy wires.	Replace the thimbles, treat the shackles and pins with zinc rich compound. Monitor the condition of the guy wires and replace prior to rust advancing to pitting stage.	To be scheduled
Throughout height	Varies	Category 1 to 2 rust is present on the guy wires, becoming more advanced in the upper portions of the tower.	Monitor the condition and replace the guy wires prior to advancement to category 3 rust/loss of material.	Monitor
Ground	Varies	At each guy anchor, category 1 to 2 rust was observed on the guy attachment hardware. Isolated regions of category 3 rust were observed, but loss of material was not detected at the time of this inspection.	It is recommended the affected regions be brushed and treated with zinc rich compound and monitored for advancement.	To be scheduled
Ground	Varies	End sleeves are not present on the preformed ends of the 1" Ø guy wires. Mild "bird caging" (flaring of strand ends) was observed.	It is recommended end sleeves be installed to protect the ends of the guy grips. (9) 1" end sleeves are required to correct.	To be scheduled
0'	All anchors	The guy anchors are not secured with fencing or bollards.	It is recommended that the guy anchors be secured against vandalism by fencing or secured against farm equipment impacts with bollards.	To be scheduled
Ground	Varies	The guy ground wire has become detached from the wires at the following locations: <ul style="list-style-type: none"> Anchor A, levels 3 and 4 Anchor B, levels 3 and 5 Anchor C, levels 1, 3 and 4	Reconnect the ground leads.	To be scheduled

Proventus Structural Services, LLC

*Please contact Angie Shyrigh with any questions regarding the content of this report.
(614)312-8107*

Ground	Anchor B	The fan plate is not in alignment with the tower. It points approximately 3 degrees to the left as standing behind fan plate looking at the tower.	It is recommended the engineer of record be consulted to determine corrective course of action. Photo document the condition on a regular basis to determine if movement is occurring.	To be scheduled, monitor
--------	----------	--	--	--------------------------

Proventus Structural Services, LLC

*Please contact Angie Shyrigh with any questions regarding the content of this report.
(614)312-8107*

Access and Compound

- Access road
- Compound gates & fencing
- Compound substrate
- Shelter exteriors

Observations

The structure's access and compound are in fair, functional condition with no deficiencies observed.

Proventus Structural Services, LLC

*Please contact Angie Shyrigh with any questions regarding the content of this report.
(614)312-8107*

Concrete Foundations

- Ground condition
 - Settlement, movement, earth cracks
 - Erosion
 - Site condition (standing water, drainage, trees, etc.)
- Anchorage condition
 - Nuts and/or locking device (tightened)
 - Grout condition
 - Anchorage and/or anchor rod condition
- Concrete condition
 - Cracking, spalling, or splitting
 - Chipped or broken concrete
 - Honeycombing
 - Low spots to collect moisture

Observations

Elevation	Location	Description	Recommendation	Priority
0'	Tower foundation	Light honeycombing is present on the tower foundation.	Monitor the condition of the concrete for cracking or degradation.	Monitor

Proventus Structural Services, LLC

Please contact Angie Shyrigh with any questions regarding the content of this report.
(614)312-8107

Structure Condition

- Damaged members (legs and bracing)
- Loose members
- Missing members
- Climbing facilities, platforms, catwalks – all secure
- Loose and/or missing bolts and/or locking devices
- Visible cracks in welded connections

Observations

Elevation	Location	Description	Recommendation	Priority
248'	AB and CA Faces	Horizontal members are not installed on these faces.	Consult the engineer of record to determine if these horizontals require to be installed.	To be scheduled

Proventus Structural Services, LLC

Please contact Angie Shyrigh with any questions regarding the content of this report.
(614)312-8107

Finish

- Paint and/or galvanizing condition
- Rust and/or corrosion condition including mounts and accessories
- FAA or ICAO color marking conditions
- Water collection in members (to be remedied, e. g. unplug drain holes, etc.)

Note: Corrosion Definitions

Category 1 rust: light discoloration of steel surface, galvanizing may be wearing thin however rust does not penetrate steel and there is no loss of material. Recommended action is generally to monitor and record condition to determine the advancement of the condition.

Category 2 rust: discoloration is heavy and light pitting may be present. Recommended action is generally to brush region and treat with zinc rich compound. After treatment, region should be monitored, and condition recorded at regular intervals to determine advancement of condition.

Category 3 rust: heavy pitting, flaking and/or loss of material is present. Recommended action is generally to replace component. If component replacement is not feasible, a review of condition by a professional engineer is recommended to determine course of action.

Observations

Elevation	Location	Description	Recommendation	Priority
Throughout height	Tower surface	The galvanizing is wearing thin and rust is forming, advancing to category 2 in the upper portions. A few isolated regions of pitting rust were observed, and loss of material was undetectable at the time of this inspection.	Paint the tower within 12 months to retard the advancement of corrosion. Ensure attention is paid to surface preparation and complete coverage of all tower surfaces.	To be scheduled
0' - 50'	Varies	Category 2 rust is present on the tower connection bolt assemblies.	It is recommended the bolt assemblies be brushed and treated within 12 months.	To be scheduled
50' - 250'	Varies	Category 3 rust is present on the tower connection bolt assemblies.	It is recommended these bolt assemblies be replaced within 12 months.	To be scheduled
Throughout height	BC Face	The safety cable keepers are degraded beyond functionality, and as a result the safety cable has rubbed the surface of the tower horizontals and worn away the galvanizing.	It is recommended the safety cable be secured and prevented from rubbing the tower.	To be scheduled

Proventus Structural Services, LLC

Please contact Angie Shyrigh with any questions regarding the content of this report.
(614)312-8107

Lighting

- Conduit, junction boxes and fasteners (weather tight and secure)
- Drain and vent openings (unobstructed)
- Wiring condition
- Light lenses
- Photocell facing north
- Bulb condition
- Controller function if accessible

Light Type	Elevation	Location
Incandescent Sidelight	125'	A leg
Incandescent Sidelight	125'	B leg
Incandescent Sidelight	125'	C leg
Strobe Beacon	249'	A leg
LED Beacon	249'	C Leg

Observations

Elevation	Location	Description	Recommendation	Priority
125', 249'	Varies	<p>Multiple deficiencies were observed with the old lighting system:</p> <ul style="list-style-type: none"> • Advanced, pitting category 3 rust is present on the lighting conduit, junction boxes and hardware securing it to the tower • The side light conduit is taped yet broken resulting in the wiring being exposed • The side light conduit is not secured to the tower and is instead resting on the diagonals • The side light fixtures are upside down • The B leg side light lens is broken • The C leg lens is entirely missing • The old beacon lens is entirely missing 	Remove the old lighting system and associated components entirely. Dispose of off-site.	To be scheduled

Proventus Structural Services, LLC

Please contact Angie Shyrigh with any questions regarding the content of this report.
(614)312-8107

Grounding

- Connections
- Corrosion
- Lightning protection (secured to structure)

Observations

Elevation	Location	Description	Recommendation	Priority
255'	BC Leg	A lightning rod extension is present; however a lightning rod is not. At the time of the 2013 inspection the lightning rod was observed to be present.	Install a lightning rod.	To be scheduled

Proventus Structural Services, LLC

Please contact Angie Shyrigh with any questions regarding the content of this report.
(614)312-8107

Personnel Safety

- Presence and condition of safety cable system
- Integrity of climbing facilities
- Availability of adequate anchorage points throughout height of climb

Observations and Issues Found

Elevation	Location	Description	Recommendation	Priority
Throughout height	Climbing face	Category 3 rust is present on the safety cable and associated components.	It is recommended the safety cable system and associated components be replaced.	To be scheduled

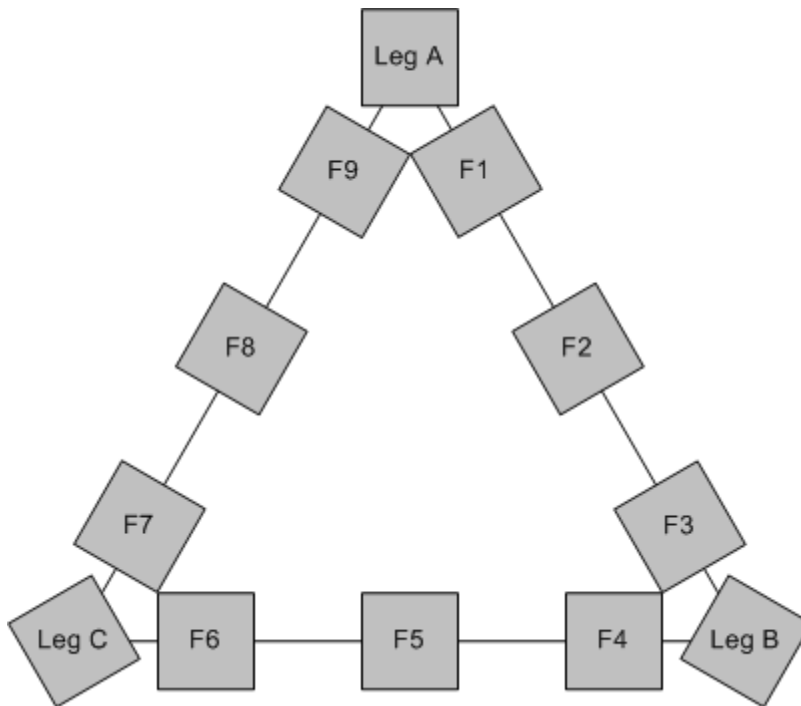
Proventus Structural Services, LLC

Please contact Angie Shyrigh with any questions regarding the content of this report.
(614)312-8107

Antennas and Lines

- Antenna condition
- Mount and/or ice shield condition (bent, loose, and/or missing members)
- Feedline condition (flanges, seals, dents, jacket damage, grounding, etc.)
- Feedline hanger condition (snap-ins, bolt on, kellum grips, etc.)
- Secured to structure

Coax Position Diagram



Proventus Structural Services, LLC

Please contact Angie Shyrigh with any questions regarding the content of this report.
(614)312-8107

Loading

#	Elev.	Az.	LOADING ITEMS					FEEDLINES				MOUNT DESCRIPTION										
			Connected to:	Type	Make	Model	Dimensions			Quant.	Size	Location		CL Elev.	Connected to:	Desc.	Dimensions					
							H	W	D			H	W				D					
1	31' 0"	260°	CLAMPSET	PANEL	AMPHENOL	5963300G	75.40"	17.00"	6.00"	1	3/8"	OUTSIDE	F8	31' 0"	C LEG	CLAMPSETS	N/A	N/A	N/A			
2	27' 0"	N/A	CLAMPSET	RADIO	ERICSSON	RRUS 11 B12	19.60"	16.90"	7.00"					27' 0"	C LEG	CLAMPSETS	N/A	N/A	N/A			
3	24' 0"	N/A	CLAMPSET	RADIO	ERICSSON	RADIO 4415	16.54"	13.46"	6.30"					24' 0"	C LEG	CLAMPSETS	N/A	N/A	N/A			
4	75' 0"	260°	CLAMPSET	PANEL	AMPHENOL	BXA-80090 8CF-2DIN	94.70"	8.10"	5.70"	1	7/8"	OUTSIDE	F7	74' 0"	C LEG	CLAMPSETS	N/A	N/A	N/A			
5	74' 0"				NONE					1	3/8"	OUTSIDE	F9			NONE						
6	89' 0"				NONE					4	1/4"	OUTSIDE	F6			NONE						
					NONE					1	3/8"							NONE				
7	91' 0"	55°	CLAMPSET	PANEL	ILLEGIBLE	ILLEGIBLE	12.00"	12.00"	2.00"	1	3/8"	OUTSIDE	F1	94' 0"	A LEG	CLAMPSETS	N/A	N/A	N/A			
8	95' 6"	60°	CLAMPSET	PANEL	AMPHENOL	BXA-80090 8CF-2DIN	94.70"	8.10"	5.70"	2	7/8"	OUTSIDE	F7	95' 6"	B LEG	CLAMPSETS	N/A	N/A	N/A			
9	93' 0"				NONE									93' 0"	A LEG	MOUNT REMNANT	4"	6"	4"			
10	106' 0"				NONE					1	1/2"	OUTSIDE	F3			NONE						
11	106' 0"				NONE									106' 0"	C LEG	STANDOFF	1' 4"	2"	2' 0"			
12	108' 0"	60°	BRACKET	MW DISH	ANDREW	ILLEGIBLE	36' 0" Ø	-	15.20"	2	1/2"	OUTSIDE	F3	108' 0"	A LEG	BRACKET	N/A	N/A	N/A			
13	108' 0"	N/A	MW DISH	RADIO	ILLEGIBLE	ILLEGIBLE	10.00"	10.00"	5.00"											10.00"	10.00"	5.00"
14	108' 0"	N/A	MW DISH	RADIO	ILLEGIBLE	ILLEGIBLE	10.00"	10.00"	5.00"													
15	110' 6"	50°	STANDOFF	PARAGRID	ILLEGIBLE	ILLEGIBLE	36.00"	6.00"	6.00"	1	1 1/4"	OUTSIDE	F3	110' 0"	B LEG	STANDOFF	1' 4"	2"	2' 0"			
16	114' 0"	50°	STANDOFF	MW DISH	COMMSCOPE	ILLEGIBLE	48.00"	-	29.50"	2	3/8"	OUTSIDE	F6	113' 0"	A LEG	STANDOFF	4' 0"	3 1/2"	4' 0"			
17	114' 0"	N/A	MW DISH	RADIO	DRAGONWAVE	RHHP15B	7.50"	7.50"	3.50"													
18	114' 0"	N/A	MW DISH	RADIO	DRAGONWAVE	RHHP15B	7.50"	7.50"	3.50"													
19	121' 0"	10°	PIPE MOUNT	PANEL	COMBA	OD12-065R16M18J-GQ	78.70"	17.50"	5.10"					121' 0"	A LEG	PIPE MOUNT	8' 0"	3 1/2"	1' 0"			
20	121' 0"	130°	PIPE MOUNT	PANEL	COMBA	OD12-065R16M18J-GQ	78.70"	17.50"	5.10"					121' 0"	B LEG	PIPE MOUNT	8' 0"	3 1/2"	1' 0"			
21	121' 0"	250°	PIPE MOUNT	PANEL	COMBA	OD12-065R16M18J-GQ	78.70"	17.50"	5.10"					121' 0"	C LEG	PIPE MOUNT	8' 0"	3 1/2"	1' 0"			
22	126' 0"	210°	CLAMPSET	MW DISH	UBIQUITI	AIRFIBER 60	16.26" Ø	-	12.60"	1	1/4"	OUTSIDE	F6	126' 0"	C LEG	CLAMPSETS	N/A	N/A	N/A			
23	130' 0"	10°	STANDOFF	PANEL	KP PERFORMANCE	KPP-2S3SX8-65	50.50"	9.70"	2.60"	1	3/8"	OUTSIDE	F3	129' 6"	B LEG	STANDOFF	1' 6"	2 1/2"	2' 0"			
24	130' 6"	N/A		RADIO	MIMOSA	A5C	11.81"	5.94"	3.35"													
25	130' 0"	320°	CLAMPSET	PANEL	AMPHENOL	BXA-80090 8CF-2DIN	94.70"	8.10"	5.70"	2	7/8"	OUTSIDE	F7	130' 0"	A LEG	CLAMPSETS	N/A	N/A	N/A			
26	131' 0"	350°	BRACKET	MW DISH	RADIOWAVES	MSS2-11V	24.0" Ø	-	10.00"	1	3/8"	OUTSIDE	F6	131' 0"	C LEG	BRACKET	N/A	N/A	N/A			
27	131' 0"	N/A	MW DISH	ODU	MIMOSA	B11	10.20"	9.60"	2.80"													
28	136' 0"	250°	BRACKET	DISH	MIMOSA	B5	17.4 Ø	-	14.30"	1	3/8"	OUTSIDE	F6	137' 0"	C LEG	BRACKET	N/A	N/A	N/A			
29	138' 0"	60°	STANDOFF	PANEL	KP PERFORMANCE	KPPA-5GHZHV4P65S	17.00"	11.00"	3.90"	1	3/8"	OUTSIDE	F6	138' 0"	A LEG	CLAMPSETS	N/A	N/A	N/A			
30	138' 6"	N/A		RADIO	MIMOSA	A5C	11.81"	5.94"	3.35"													
31	138' 0"	300°	BRACKET	PANEL	KP PERFORMANCE	KPPA-5GHZHV4P65S	17.00"	11.00"	3.90"	1	3/8"	OUTSIDE	F6	138' 0"	C LEG	BRACKET	N/A	N/A	N/A			
32	138' 6"	N/A		RADIO	MIMOSA	A5C	11.81"	5.94"	3.35"													
33	139' 0"	N/A	HOSE CLAMPS	RADIO	MIMOSA	A5C	11.81"	5.94"	3.35"					139' 0"	C LEG	HOSE CLAMPS	N/A	N/A	N/A			
34	141' 0"	270°	BRACKET	DISH	MIMOSA	B5	17.4 Ø	-	14.30"	1	3/8"	OUTSIDE	F6	141' 0"	C LEG	BRACKET	N/A	N/A	N/A			
35	142' 0"	60°	BRACKET	MW DISH	RADIOWAVES	MSS2-11V	24.0" Ø	-	10.00"	1	3/8"	OUTSIDE	F6	142' 0"	B LEG	BRACKET	N/A	N/A	N/A			
36	142' 0"	N/A	MW DISH	ODU	MIMOSA	B11	10.20"	9.60"	2.80"													
37	146' 0"	260°	STANDOFF	PANEL	KP PERFORMANCE	KP-5HVX8-65	34.00"	11.00"	3.90"	2	3/8"	OUTSIDE	F6	146' 0"	C LEG	STANDOFF	2' 0"	2"	3' 0"			
38	147' 0"	N/A		RADIO	MIMOSA	A5C	11.81"	5.94"	3.35"													
39	147' 0"	N/A		RADIO	MIMOSA	A5C	11.81"	5.94"	3.35"													
40	143' 0"	N/A	CLAMPSET	RADIO	ERICSSON	RADIO 4415	16.54"	13.46"	6.30"	2	3/8"	OUTSIDE	F9	143' 0"	A LEG	CLAMPSETS	N/A	N/A	N/A			
41	145' 0"	N/A	CLAMPSET	RADIO	ERICSSON	RRUS 11 B12	19.60"	16.90"	7.00"					145' 0"	A LEG	CLAMPSETS	N/A	N/A	N/A			
42	151' 0"	350°	CLAMPSET	PANEL	AMPHENOL	5963300G	75.40"	17.00"	6.00"	2	1/4"			151' 0"	A LEG	CLAMPSETS	N/A	N/A	N/A			

Proventus Structural Services, LLC

Please contact Angie Shyrigh with any questions regarding the content of this report.
(614)312-8107

#	LOADING ITEMS						FEEDLINES				MOUNT DESCRIPTION												
	Elev.	Az.	Connected to:	Type	Make	Model	Dimensions			Quant.	Size	Location		CL Elev.	Connected to:	Desc.	Dimensions						
							H	W	D			H	W				D						
43	150' 6"	5°	CLAMPSET	MW DISH	ILLEGIBLE	ILLEGIBLE	24.00"	-	9.00"	1	1/4"	INSIDE	B LEG	150' 6"	B LEG	CLAMPSETS	N/A	N/A	N/A				
44	150' 6"	N/A	MW DISH	RADIO	CAMBUM	PTP-820S-7-196A-1W3-L-ESS	9.06"	9.17"	3.86"	1	1/4"	INSIDE	B LEG	150' 6"	B LEG	CLAMPSETS	N/A	N/A	N/A				
45	150' 6"	265°	CLAMPSET	MW DISH	ILLEGIBLE	ILLEGIBLE	24.00"	-	9.00"	1	1/4"	INSIDE	B LEG	150' 6"	C LEG	CLAMPSETS	N/A	N/A	N/A				
46	150' 6"	N/A	MW DISH	RADIO	CAMBUM	PTP-820S-7-196A-1W3-L-ESS	9.06"	9.17"	3.86"	1	1/4"	INSIDE	B LEG	150' 6"	C LEG	CLAMPSETS	N/A	N/A	N/A				
47	154' 0"	5°	CLAMPSET	MW DISH	UBIQUITI	AIRFIBER 60	16.26" Ø	-	12.60"	1	3/8"	OUTSIDE	F9	154' 0"	B LEG	CLAMPSETS	N/A	N/A	N/A				
48	154' 0"	210°	CLAMPSET	MW DISH	UBIQUITI	AIRFIBER 60	16.26" Ø	-	12.60"	1	3/8"	OUTSIDE	F9	154' 0"	C LEG	CLAMPSETS	N/A	N/A	N/A				
49	156' 0"	5°	CLAMPSET	MW DISH	KP PERFORMANCE	KP-5PDC5C-1	15.31"Ø	-	4.00"	1	3/8"	OUTSIDE	F9	156' 0"	B LEG	CLAMPSETS	N/A	N/A	N/A				
50	157' 0"	N/A	HOSE CLAMPS	ODU	MIMOSA	B5C	10.50"	6.20"	3.00"	1	3/8"	OUTSIDE	F9	157' 0"	B LEG	HOSE CLAMPS	N/A	N/A	N/A				
51	155' 6"	250°	CLAMPSET	MW DISH	KP PERFORMANCE	KP-5PDC5C-1	15.31"Ø	-	4.00"	1	3/8"	OUTSIDE	F9	156' 6"	C LEG	CLAMPSETS	N/A	N/A	N/A				
52	157' 0"	N/A	HOSE CLAMPS	ODU	MIMOSA	B5C	10.50"	6.20"	3.00"	1	3/8"	OUTSIDE	F9	157' 0"	C LEG	HOSE CLAMPS	N/A	N/A	N/A				
53	158' 6"	N/A	HOSE CLAMPS	RADIO	SIKLU	MH-N366-CCP-POE-MWB	9.40"	7.30" Ø	-	1	3/8"	OUTSIDE	F9	158' 6"	C LEG	HOSE CLAMPS	N/A	N/A	N/A				
54	157' 0"	N/A	HOSE CLAMPS	CAMERA	SUNBA	601-D25X	10.00"	6.00" Ø	-	1	3/8"	OUTSIDE	F9	157' 0"	A LEG	HOSE CLAMPS	N/A	N/A	N/A				
55	158' 6"	N/A	HOSE CLAMPS	RADIO	SIKLU	MH-N366-CCP-POE-MWB	9.40"	7.30" Ø	-	1	3/8"	OUTSIDE	F9	158' 6"	B LEG	HOSE CLAMPS	N/A	N/A	N/A				
56	156' 0"	N/A	HOSE CLAMPS	RADIO	ILLEGIBLE	ILLEGIBLE	10.00"	7.50"	2.00"	2	1/4"	OUTSIDE	F9	156' 0"	B LEG	HOSE CLAMPS	N/A	N/A	N/A				
57	160' 0"	5°	CLAMPSET	MW DISH	KP PERFORMANCE	KP-5PDC5C-2	24.97" Ø	-	5.50"	1	3/8"	OUTSIDE	F9	160' 0"	B LEG	CLAMPSETS	N/A	N/A	N/A				
58	162' 0"	N/A	HOSE CLAMPS	ODU	MIMOSA	B5C	10.50"	6.20"	3.00"	1	3/8"	OUTSIDE	F9	162' 0"	B LEG	HOSE CLAMPS	N/A	N/A	N/A				
59	156' 0"	N/A	CLAMPSET	RADIO	CAITTA	ZXSDR R8662A S7100	16.60"	8.60"	6.50"	1	1/4"	OUTSIDE	F8	156' 0"	A LEG	CLAMPSETS	N/A	N/A	N/A				
60	166' 0"	N/A	HOSE CLAMPS	YAGI	WESTELL TECHNOLOGIES	AY/746-896/11	8.00"	2.20"	33.10"	1	3/8"			166' 0"	A LEG	HOSE CLAMPS	N/A	N/A	N/A				
61	168' 0"	N/A	HOSE CLAMPS	YAGI	WESTELL TECHNOLOGIES	AY/746-896/11	8.00"	2.20"	33.10"	1	3/8"			168' 0"	B LEG	HOSE CLAMPS	N/A	N/A	N/A				
62	165' 0"	280°	STANDOFF	MW DISH	COMMSCOPE	ILLEGIBLE	48.0" Ø	-	29.50"	2	3/8"	OUTSIDE	F6	165' 0"	C LEG	STANDOFF	4' 0"	3 1/2"	4' 0"				
63	165' 0"	N/A	MW DISH	RADIO	DRAGONWAVE	RHHP15B	7.50"	7.50"	3.50"	2	3/8"			165' 0"	C LEG	STANDOFF	4' 0"	3 1/2"	4' 0"				
64	165' 0"	N/A	MW DISH	RADIO	DRAGONWAVE	RHHP15B	7.50"	7.50"	3.50"	2	3/8"			165' 0"	C LEG	STANDOFF	4' 0"	3 1/2"	4' 0"				
65	165' 0"				NONE					6	7/8"	OUTSIDE	F9			NONE							
66	168' 0"	N/A	CLAMPSET	RADIO	AIRSPAN	B41	24.00"	10.00"	14.00"	7	3/8"	OUTSIDE	F9	168' 0"	A LEG	CLAMPSETS	N/A	N/A	N/A				
67	168' 0"	N/A	CLAMPSET	RADIO	AIRSPAN	B41	24.00"	10.00"	14.00"					168' 0"	C LEG	CLAMPSETS	N/A	N/A	N/A				
68	173' 0"	130°	PIPE MOUNT	PANEL	KP PERFORMANCE	KPP-2S3SX8-65	50.50"	9.70"	2.60"					173' 0"	B LEG	PIPE MOUNT	5' 6"	2 7/8"	1' 0"				
69	170' 0"	160°	PIPE MOUNT	PANEL	KP PERFORMANCE	KPP-2S3SX8-65	50.50"	9.70"	2.60"					170' 0"	C LEG	CLAMPSETS	N/A	N/A	N/A				
70	172' 0"	N/A	CLAMPSET	RADIO	AIRSPAN	B41	24.00"	10.00"	14.00"					172' 0"	A LEG	CLAMPSETS	N/A	N/A	N/A				
71	172' 0"	N/A	CLAMPSET	RADIO	AIRSPAN	B41	24.00"	10.00"	14.00"					172' 0"	B LEG	CLAMPSETS	N/A	N/A	N/A				
72	173' 0"	350°	PIPE MOUNT	PANEL	KP PERFORMANCE	KPP-2S3SX8-65	50.50"	9.70"	2.60"					173' 0"	A LEG	PIPE MOUNT	5' 6"	2 7/8"	1' 0"				
73	173' 0"	260°	PIPE MOUNT	PANEL	KP PERFORMANCE	KPP-2S3SX8-65	50.50"	9.70"	2.60"					173' 0"	A LEG	PIPE MOUNT	5' 6"	2 7/8"	1' 0"				
74	174' 0"	N/A	STANDOFF	OMNI	ILLEGIBLE	ILLEGIBLE	96.00"	2.50"	-					1	1 1/4"	OUTSIDE	F3	174' 0"	C LEG	STANDOFF	2' 0"	2"	4' 0"
75	182' 0"	100°	STANDOFF	DISH	SIKLU	EH-ANT-2FT-DL5	24.00" Ø	-	13.00"					1	1/4"	OUTSIDE	F6	182' 0"	B LEG	STANDOFF	1' 6"	2"	2' 0"
76	182' 0"	N/A		RADIO	SIKLU	EH-8010FX-ODUH-N-2C1P-EX-D	9.00"	7.00"	2.75"	2	3/8"												
77	182' 0"	N/A		RADIO	MIMOSA	B5C	10.50"	6.20"	3.00"	2	3/8"												
78	182' 0"	210°	STANDOFF	DISH	SIKLU	EH-ANT-2FT-DL5	24.00" Ø	-	13.00"	1	1/4"	OUTSIDE	F6	182' 0"	C LEG	STANDOFF	1' 6"	2"	2' 0"				
79	182' 0"	N/A		RADIO	SIKLU	EH-8010FX-ODUH-N-2C1P-EX-D	9.00"	7.00"	2.75"	2	3/8"												
80	182' 0"	N/A		RADIO	MIMOSA	B5C	10.50"	6.20"	3.00"	2	3/8"												
81	183' 0"				NONE					6	7/8"	OUTSIDE	F9			NONE							
82	193' 0"	30°	CLAMPSET	PANEL	REDLINE	AFS-DBG-0360-1-2-PANEL	25.60"	7.90"	1.20"	1	3/8"	OUTSIDE	F6	189' 0"	A LEG	CLAMPSETS	N/A	N/A	N/A				
83	193' 0"	N/A	PANEL	RADIO	REDLINE	RDL-3000	11.45"	10.57"	2.50"	1	3/8"												
84	192' 0"	270°	STANDOFF	PANEL	REDLINE	AFS-DBG-0360-1-2-PANEL	25.60"	7.90"	1.20"	1	3/8"												
85	192' 0"	N/A	PANEL	RADIO	REDLINE	RDL-3000	11.45"	10.57"	2.50"	1	3/8"												
86	206' 0"	N/A	STANDOFF	OMNI	ILLEGIBLE	ILLEGIBLE	60.00"	2.00"	-	1	1 1/4"	OUTSIDE	F3	205' 6"	C LEG	STANDOFF	2' 0"	2 1/2"	6' 0"				
87	210' 0"	50°	STANDOFF	MW DISH	COMMSCOPE	ILLEGIBLE	48.0" Ø	-	30.00"	2	3/8"	OUTSIDE	F6	205' 0"	A LEG	STANDOFF	4' 0"	3 1/2"	4' 0"				
88	210' 0"	N/A	MW DISH	RADIO	DRAGONWAVE	RLHP15B2	7.50"	7.50"	3.75"														
89	210' 0"	N/A	MW DISH	RADIO	DRAGONWAVE	RLHP15B2	7.50"	7.50"	3.75"														

Proventus Structural Services, LLC

Please contact Angie Shyrigh with any questions regarding the content of this report.
(614)312-8107

#	LOADING ITEMS								FEEDLINES				MOUNT DESCRIPTION						
	Elev.	Az.	Connected to:	Type	Make	Model	Dimensions			Quant.	Size	Location		CL Elev.	Connected to:	Desc.	Dimensions		
							H	W	D								H	W	D
90							NONE			1	1 1/4"	OUTSIDE	F3			NONE			
91	219' 6"	N/A	STANDOFF	OMNI	ILLEGIBLE	ILLEGIBLE	96.00"	2.50" Ø	-	1	1 1/4"	OUTSIDE	F3	218' 0"	C LEG	STANDOFF	2' 0"	2 1/2"	6' 0"
92	221' 0"	N/A	STANDOFF	OMNI	ILLEGIBLE	ILLEGIBLE	72.00"	2.00" Ø	-	1	7/8"	OUTSIDE	F2	221' 0"	B LEG	STANDOFF	2' 0"	2 3/8"	6' 0"
93	231' 6"	N/A	STANDOFF	OMNI	ILLEGIBLE	ILLEGIBLE	96.00"	2.50" Ø	-	1	1 1/4"	OUTSIDE	F3	229' 6"	A LEG	STANDOFF	2' 0"	2 1/2"	6' 0"
94	231' 6"	N/A		RADIO	ILLEGIBLE	ILLEGIBLE	18.00"	6.00"	4.00"										
95	230' 0"						NONE			1	1/2"	OUTSIDE	F3			NONE			
96	233' 0"	N/A	STANDOFF	OMNI	ILLEGIBLE	ILLEGIBLE	72.00"	2.00" Ø	-	1	7/8"	OUTSIDE	F2	233' 0"	C LEG	STANDOFF	2' 0"	2 3/8"	6' 0"
97	244' 0"	N/A	STANDOFF	OMNI	ILLEGIBLE	ILLEGIBLE	96.00"	2.50" Ø	-	2	1/4"	OUTSIDE	A LEG	244' 0"	A LEG	STANDOFF	2' 0"	2 1/2"	6' 0"
98	244' 0"	N/A		RADIO	ILLEGIBLE	ILLEGIBLE	18.00"	6.00"	4.00"										
99	246' 6"	N/A	STANDOFF	OMNI	ILLEGIBLE	ILLEGIBLE	72.00"	2.00" Ø	-	1	7/8"	OUTSIDE	F2	246' 6"	C LEG	STANDOFF	2' 0"	2 3/8"	6' 0"

Proventus Structural Services, LLC

Please contact Angie Shyrigh with any questions regarding the content of this report.
(614)312-8107

Observations

Elevation	Location	Description	Recommendation	Priority
Varies	Varies	Numerous out of service and abandoned pieces of tower mounted equipment were observed.	It is recommended out of service or otherwise abandoned equipment be completely removed from the structure to reduce the resources required to maintain safe connection to the structure as well as to maintain accurate loading records.	To be scheduled
Varies	Varies	The stiff-arm associated with each antenna #16, #62 and #87 is connected to a tower bracing member.	To prevent damage to the bracing member it is recommended the stiff-arm connections be relocated to tower legs.	To be scheduled
206'	C Leg	Electrical tape is currently being used to connect this antenna (#86) to its mount.	Replace the tape with hot dip galvanized brackets.	To be scheduled

Proventus Structural Services, LLC

*Please contact Angie Shyrigh with any questions regarding the content of this report.
(614)312-8107*

Guy Wires and Associated Hardware

Items inspected include:

- Strand condition (corrosion, breaks, nicks, kinks, etc.)
- Guy hardware conditions
 - Turnbuckles or equivalent (secure and safety properly applied)
 - Cable thimbles properly in place (if required)
 - Service sleeves properly in place (if required)
 - Cable connectors (end fittings)
 - Cable clamps applied and bolts tight
 - Wire serving properly applied
 - No signs of slippage or damaged strands
 - Preformed wraps – properly applied, fully wrapped and sleeves in place
 - Poured sockets secure and showing no separation
 - Shackles, bolts, pins and cotter pins secure and in good condition
- Guy tensions

Note: 1) Minor variations in guy tensions are to be expected due to temperature and low wind speed conditions. The cause of significant changes should be determined immediately, and proper remedial action taken. Possible cause may be initial construction loosening, previously experienced extreme wind or ice, anchor movements, base settlement, or connection slippage.

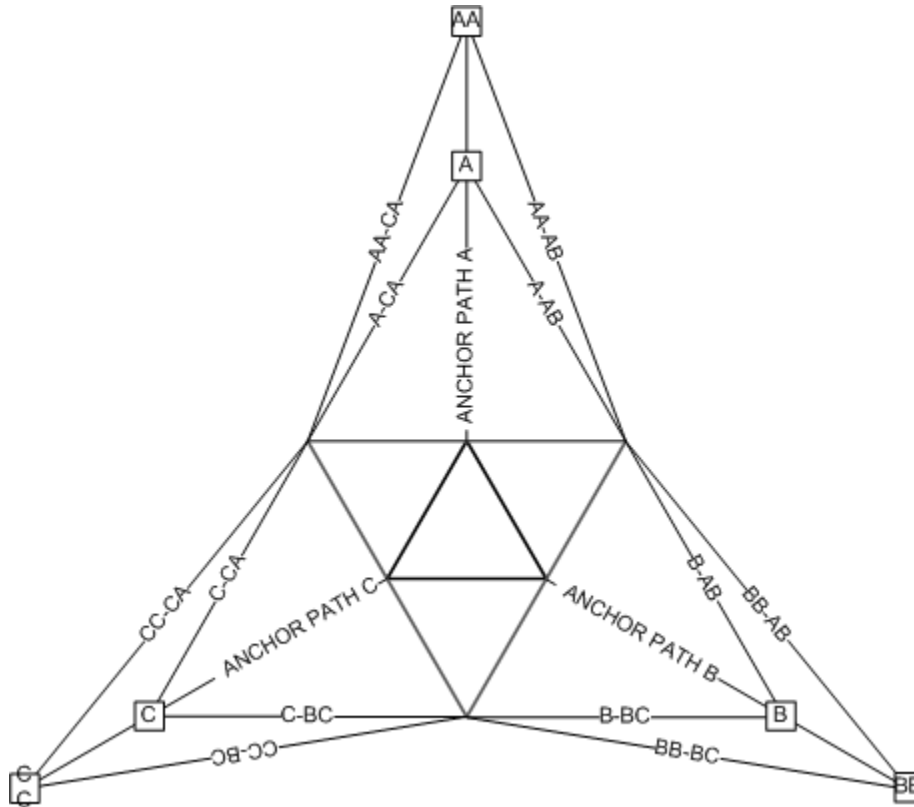
2) Tension variations at a single level are to be expected because of anchor elevation differences, construction deviations and wind effects.

Proventus Structural Services, LLC

*Please contact Angie Shyrigh with any questions regarding the content of this report.
(614)312-8107*

Guy Anchor and Guy Wire Position Codes

- The northernmost anchor is designated “A” followed by “B” and “C” clockwise.
- Outer anchors are designated with a double letter.
- Torque arm guy wires are labeled according to the anchor plate to which it is attached followed by the two paths the guy wire is between.



Proventus Structural Services, LLC

Please contact Angie Shyrigh with any questions regarding the content of this report.
(614)312-8107

Guy Tension Results

Note: the ideal initial tension range is 7% under or 15% over the engineered tension. In the absence of engineered tensions, ideal initial tension is considered to be 10% of the manufacturer's rated breaking strength.

Temperature	86°
Wind Speed	11MPH
Wind Direction	SW

Guy Position & Level	Anchor Distance	Anchor Elevation	Attachment Elevation	Guy Wire Diameter	Ideal Initial Tension Range			Measured Tension	Result
					Low	Target	High		
A-1	136'	-5'	58'	7/8" 1X19 EHS	7412	7970	9166	7500	ACCEPTABLE TENSION
A-2			88'	7/8" 1X19 EHS	7412	7970	9166	5200	35% UNDER TARGET TENSION
A-3			133'	1" 1X19 EHS	9719	10450	12018	10700	ACCEPTABLE TENSION
A-4			178'	1" 1X19 EHS	9719	10450	12018	8200	22% UNDER TARGET TENSION
A-5			238'	1" 1X19 EHS	9719	10450	12018	6200	41% UNDER TARGET TENSION
B-1	136'	-10'	58'	7/8" 1X19 EHS	7412	7970	9166	6900	13% UNDER TARGET TENSION
B-2			88'	7/8" 1X19 EHS	7412	7970	9166	9200	15% OVER TARGET TENSION
B-3			133'	1" 1X19 EHS	9719	10450	12018	4600	56% UNDER TARGET TENSION
B-4			178'	1" 1X19 EHS	9719	10450	12018	8700	17% UNDER TARGET TENSION
B-5			238'	1" 1X19 EHS	9719	10450	12018	5800	44% UNDER TARGET TENSION
C-1	136'	-5'	58'	7/8" 1X19 EHS	7412	7970	9166	7900	ACCEPTABLE TENSION
C-2			88'	7/8" 1X19 EHS	7412	7970	9166	8400	ACCEPTABLE TENSION
C-3			133'	1" 1X19 EHS	9719	10450	12018	7900	24% UNDER TARGET TENSION
C-4			178'	1" 1X19 EHS	9719	10450	12018	6300	40% UNDER TARGET TENSION
C-5			238'	1" 1X19 EHS	9719	10450	12018	7100	32% UNDER TARGET TENSION

Results

- 4 of 15 guy wires are within the acceptable tension range.
- 1 of 15 guy wires are over the acceptable tension range.
- 10 of 15 guy wires are under the acceptable tension range.

Recommendations

The majority of the guy wire tensions are outside of the acceptable tension ranges. It is recommended that a tension service be performed within the next two years, and at regular 3 year intervals.

Proventus Structural Services, LLC

Please contact Angie Shyrigh with any questions regarding the content of this report.
(614)312-8107

Observations

Elevation	Location	Description	Recommendation	Priority
Throughout height	Varies	At each guy attachment elevation, category 3 rust was observed on the thimbles and guy wire ends. At the thimbles, loss of material of occurring. Category 2 rust was observed on the shackles and guy wires.	Replace the thimbles, treat the shackles and pins with zinc rich compound. Monitor the condition of the guy wires and replace prior to rust advancing to pitting stage.	To be scheduled
Throughout height	Varies	Category 1 to 2 rust is present on the guy wires, becoming more advanced in the upper portions of the tower.	Monitor the condition and replace the guy wires prior to advancement to category 3 rust/loss of material.	Monitor
Ground	Varies	At each guy anchor, category 1 to 2 rust was observed on the guy attachment hardware. Isolated regions of category 3 rust were observed, but loss of material was not detected at the time of this inspection.	It is recommended the affected regions be brushed and treated with zinc rich compound and monitored for advancement.	To be scheduled
Ground	Varies	End sleeves are not present on the preformed ends of the 1" Ø guy wires. Mild "bird caging" (flaring of strand ends) was observed.	It is recommended end sleeves be installed to protect the ends of the guy grips. (9) 1" end sleeves are required to correct.	To be scheduled
0'	All anchors	The guy anchors are not secured with fencing or bollards.	It is recommended that the guy anchors be secured against vandalism by fencing or secured against farm equipment impacts with bollards.	To be scheduled
Ground	Varies	The guy ground wire has become detached from the wires at the following locations: <ul style="list-style-type: none"> Anchor A, levels 3 and 4 Anchor B, levels 3 and 5 Anchor C, levels 1, 3 and 4 	Reconnect the ground leads.	To be scheduled
Ground	Anchor B	The fan plate is not in alignment with the tower. It points approximately 3 degrees to the left as standing behind fan plate looking at the tower.	It is recommended the engineer of record be consulted to determine corrective course of action. Photo document the condition on a regular basis to determine if movement is occurring.	To be scheduled, monitor

Proventus Structural Services, LLC

Please contact Angie Shyrigh for any questions regarding the content of this report.
(614) 312-8107 or angie@proventusonline.com

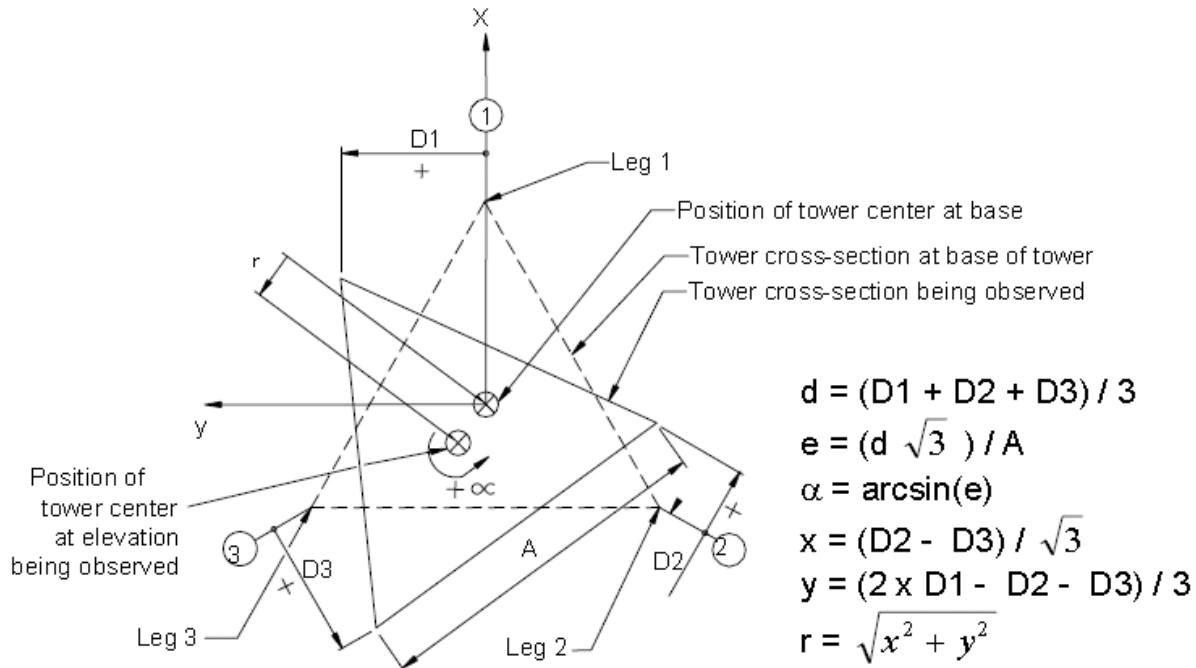
Tower Alignment

Observations

The tower twist and plumb are within acceptable limits.

Temperature	86°
Wind Speed	11MPH
Wind Direction	SW

Mast Elevation in FT.	OBSERVED MAST DATA				CALCULATED TWIST			CALCULATED OUT-OF-PLUMB		
	A IN.	D1 IN.	D2 IN.	D3 IN.	d IN.	e	a DEG.	x IN.	y IN.	r IN.
0.00	48.00	0	0	0	0.00	0.00	0.00	0.00	0.00	0.00
58.00	48.00	1.1	0.3	1.6	1.00	0.04	2.07	-0.75	0.10	0.76
88.00	48.00	1.1	0.3	2.4	1.27	0.05	2.62	-1.21	-0.17	1.22
133.00	48.00	0.2	0.2	1.4	0.60	0.02	1.24	-0.69	-0.40	0.80
178.00	48.00	-0.5	-1.4	0.2	-0.57	-0.02	-1.17	-0.92	0.07	0.93
238.00	48.00	-0.5	-0.3	-0.1	-0.30	-0.01	-0.62	-0.12	-0.20	0.23



Proventus Structural Services, LLC

Please contact Angie Shyrigh for any questions regarding the content of this report.
 (614) 312-8107 or angie@proventusonline.com

Photos



Gate signage
Photo File 1



Manufacturer's ID
Photo File 2



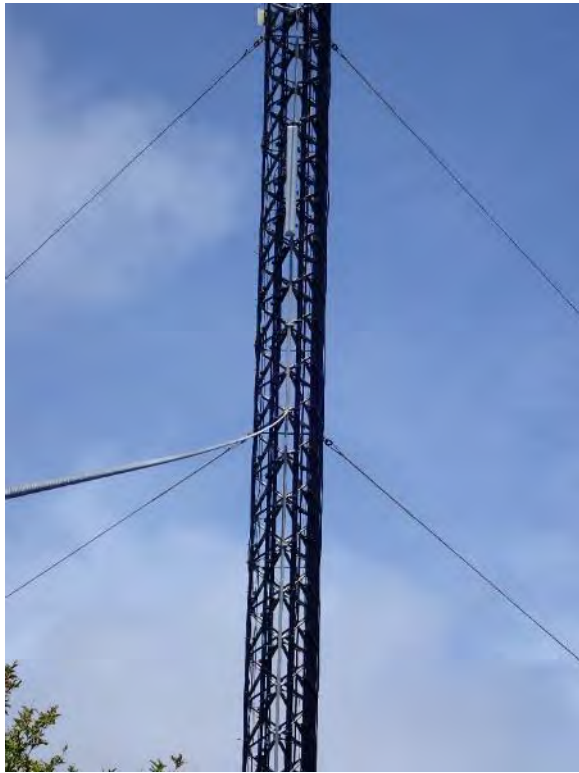
Tower profile
Photo File 3



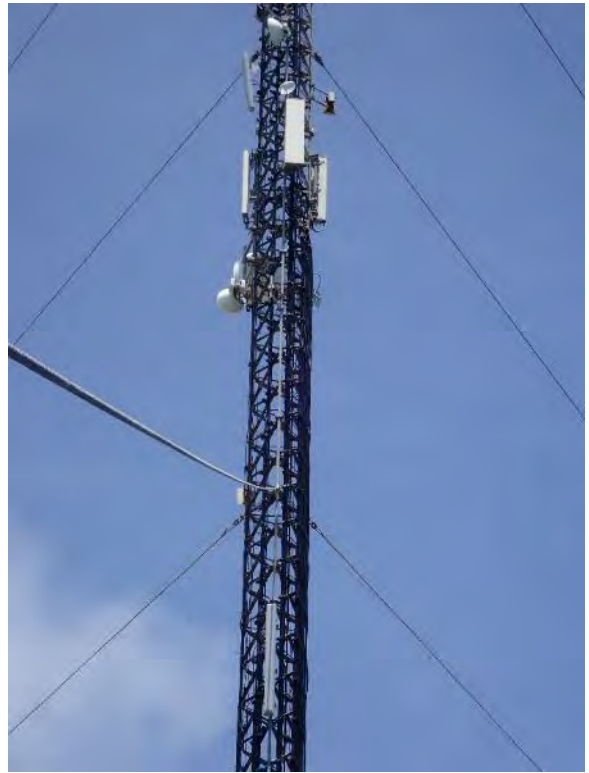
Tower profile
Photo File 4

Proventus Structural Services, LLC

Please contact Angie Shyrigh for any questions regarding the content of this report.
(614) 312-8107 or angie@proventusonline.com



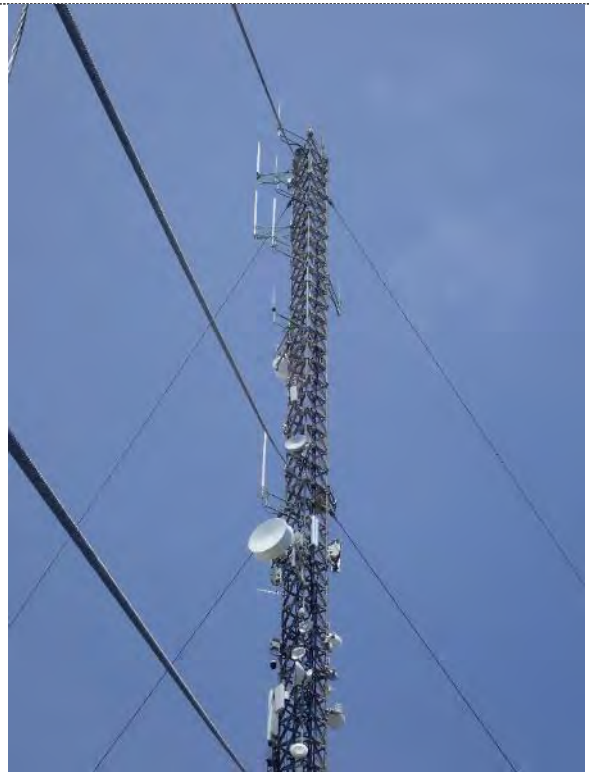
Tower profile
Photo File 5



Tower profile
Photo File 6



Tower profile
Photo File 7



Tower profile
Photo File 8

Proventus Structural Services, LLC

Please contact *Angie Shyrigh* for any questions regarding the content of this report.
(614) 312-8107 or angie@proventusonline.com



Tower base A leg
Photo File 9



Up tower A leg
Photo File 10



Up tower AB face
Photo File 11



Tower base B leg
Photo File 12

Proventus Structural Services, LLC

Please contact *Angie Shyrigh* for any questions regarding the content of this report.
(614) 312-8107 or angie@proventusonline.com



Up tower B leg
Photo File 13



Up tower BC face
Photo File 14



Tower base C leg
Photo File 15



Up tower C leg
Photo File 16

Proventus Structural Services, LLC

Please contact *Angie Shyrigh* for any questions regarding the content of this report.
(614) 312-8107 or angie@proventusonline.com



Up tower CA face
Photo File 17



Tower grounding
Photo File 18



Tower foundation
Photo File 19



Tower base
Photo File 20

Proventus Structural Services, LLC

Please contact *Angie Shyrigh* for any questions regarding the content of this report.
(614) 312-8107 or angie@proventusonline.com



Tower base
Photo File 21



Tower base
Photo File 22



Safety cable bracket
Photo File 23



Safety cable bracket
Photo File 24

Proventus Structural Services, LLC

Please contact *Angie Shyrigh* for any questions regarding the content of this report.
(614) 312-8107 or angie@proventusonline.com



Safety cable condition
Photo File 25



Abandoned feedline hangers
Photo File 26



Abandoned hangers
Photo File 27



20' leg splice
Photo File 28

Proventus Structural Services, LLC

Please contact Angie Shyrigh for any questions regarding the content of this report.
(614) 312-8107 or angie@proventusonline.com



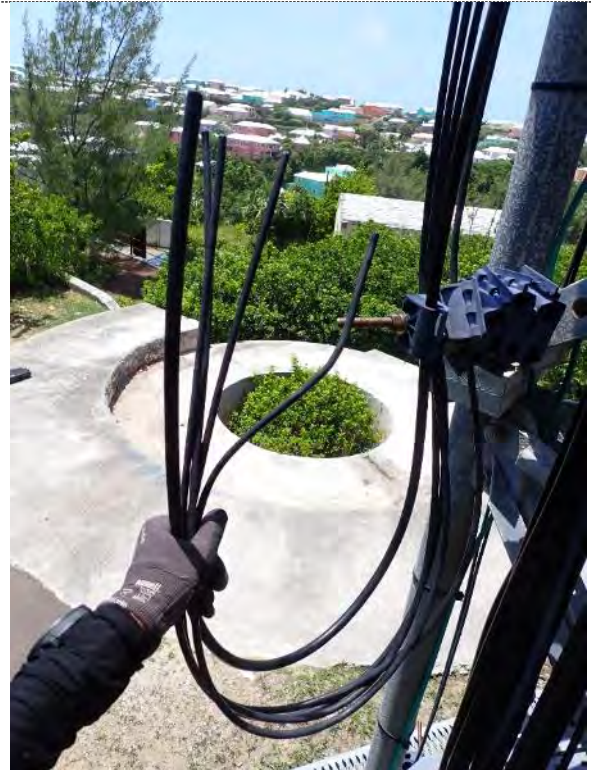
20' leg splice
Photo File 29



20' leg splice
Photo File 30



20' - 35' section
Photo File 31



Abandoned feedlines
Photo File 32

Proventus Structural Services, LLC

Please contact Angie Shyrigh for any questions regarding the content of this report.
(614) 312-8107 or angie@proventusonline.com



Radios #2, #3, antenna #4
Photo File 33



Radio #2
Photo File 34



Radio #2 label
Photo File 35



Antenna #3
Photo File 36

Proventus Structural Services, LLC

Please contact *Angie Shyrigh* for any questions regarding the content of this report.
(614) 312-8107 or angie@proventusonline.com



Antenna #3
Photo File 37



35' leg splice
Photo File 38



35' leg splice
Photo File 39



35' leg splice
Photo File 40

Proventus Structural Services, LLC

Please contact Angie Shyrigh for any questions regarding the content of this report.
(614) 312-8107 or angie@proventusonline.com



35' - 50' section
Photo File 41



Tower surface condition
Photo File 42



Tower surface condition
Photo File 43



50' leg splice
Photo File 44

Proventus Structural Services, LLC

Please contact *Angie Shyrigh* for any questions regarding the content of this report.
(614) 312-8107 or angie@proventusonline.com



50' leg splice
Photo File 45



50' leg splice
Photo File 46



50' - 65' section
Photo File 47



Tower surface condition
Photo File 48

Proventus Structural Services, LLC

Please contact *Angie Shyrigh* for any questions regarding the content of this report.
(614) 312-8107 or angie@proventusonline.com



Tower surface condition
Photo File 49



58' guy attachment
Photo File 50



58' guy attachment
Photo File 51



58' guy attachment
Photo File 52

Proventus Structural Services, LLC

Please contact Angie Shyrigh for any questions regarding the content of this report.
(614) 312-8107 or angie@proventusonline.com



58' guy attachment
Photo File 53



58' guy attachment
Photo File 54



58' guy attachment
Photo File 55



58' guy attachment
Photo File 56

Proventus Structural Services, LLC

Please contact Angie Shyrigh for any questions regarding the content of this report.
(614) 312-8107 or angie@proventusonline.com



58' guy attachment
Photo File 57



65' leg splice
Photo File 58



65' leg splice
Photo File 59



65' leg splice
Photo File 60

Proventus Structural Services, LLC

Please contact *Angie Shyrigh* for any questions regarding the content of this report.
(614) 312-8107 or angie@proventusonline.com



65' - 80' section
Photo File 61



Safety cable condition
Photo File 62



Tower surface condition
Photo File 63



Tower surface condition
Photo File 64

Proventus Structural Services, LLC

Please contact *Angie Shyrigh* for any questions regarding the content of this report.
(614) 312-8107 or angie@proventusonline.com



Antenna #4
Photo File 65



Antenna #4 label
Photo File 66



80' leg splice
Photo File 67



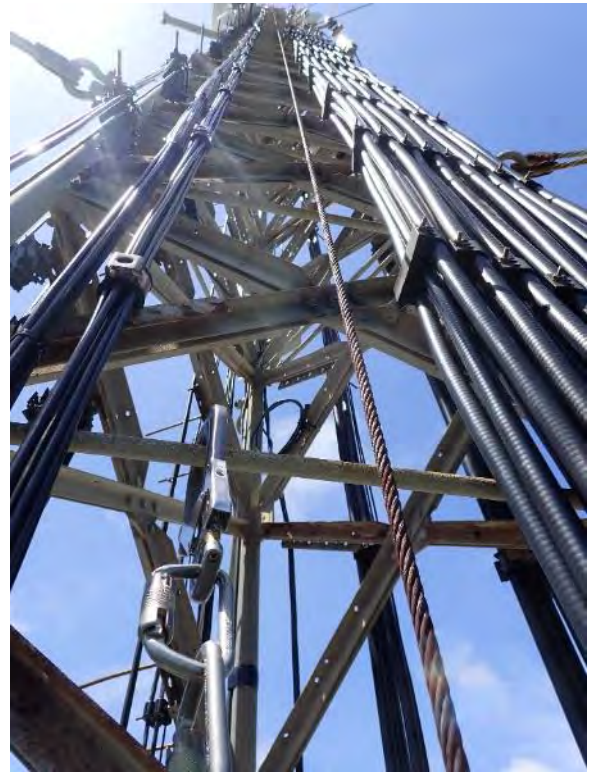
80' leg splice
Photo File 68

Proventus Structural Services, LLC

Please contact *Angie Shyrigh* for any questions regarding the content of this report.
(614) 312-8107 or angie@proventusonline.com



80' leg splice
Photo File 69



80' - 95' section
Photo File 70



Tower surface condition
Photo File 71



Safety cable keeper condition
Photo File 72

Proventus Structural Services, LLC

Please contact *Angie Shyrigh* for any questions regarding the content of this report.
(614) 312-8107 or angie@proventusonline.com



88' guy attachment
Photo File 73



88' guy attachment
Photo File 74



88' guy attachment
Photo File 75



88' guy attachment
Photo File 76

Proventus Structural Services, LLC

Please contact *Angie Shyrigh* for any questions regarding the content of this report.
(614) 312-8107 or angie@proventusonline.com



88' guy attachment
Photo File 77



88' guy attachment
Photo File 78



88' guy attachment
Photo File 79



88' guy attachment
Photo File 80

Proventus Structural Services, LLC

Please contact *Angie Shyrigh* for any questions regarding the content of this report.
(614) 312-8107 or angie@proventusonline.com



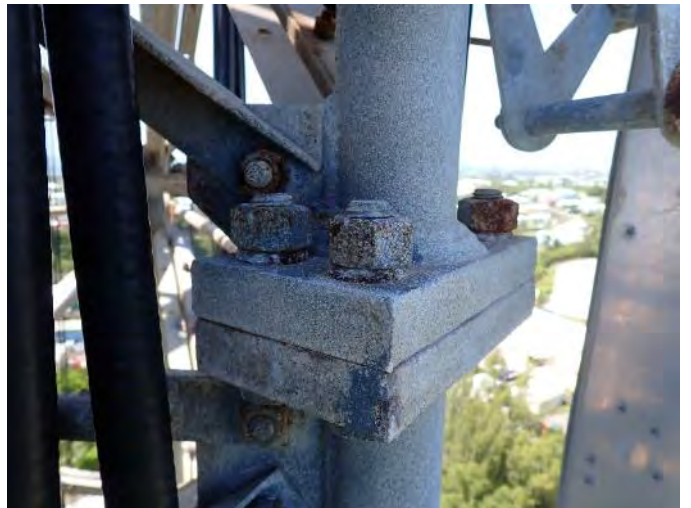
Abandoned feedlines
Photo File 81



Abandoned feedlines
Photo File 82



95' leg splice
Photo File 83



95' leg splice
Photo File 84

Proventus Structural Services, LLC

Please contact Angie Shyrigh for any questions regarding the content of this report.
(614) 312-8107 or angie@proventusonline.com



95' leg splice
Photo File 85



95' - 110' section
Photo File 86



Antenna #7
Photo File 87



Antenna #7 label
Photo File 88

Proventus Structural Services, LLC

Please contact *Angie Shyrigh* for any questions regarding the content of this report.
(614) 312-8107 or angie@proventusonline.com



Mount remnant #9
Photo File 89



Antenna #12, radios #13, #14
Photo File 90



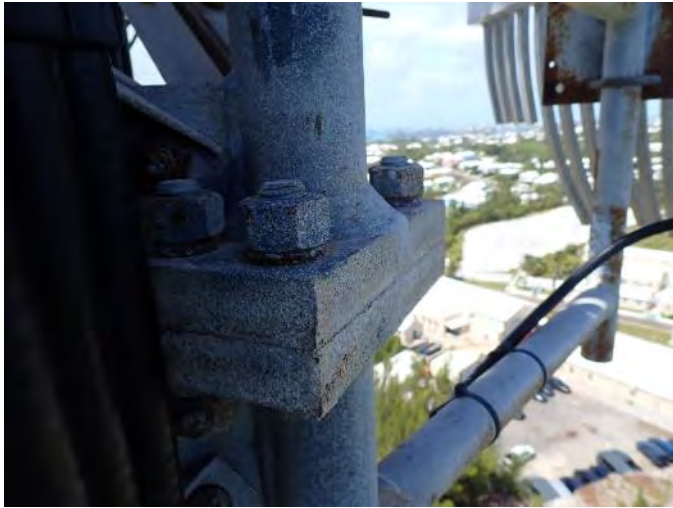
Antenna #15
Photo File 91



110' leg splice
Photo File 92

Proventus Structural Services, LLC

Please contact *Angie Shyrigh* for any questions regarding the content of this report.
(614) 312-8107 or angie@proventusonline.com



110' leg splice
Photo File 93



Dead feedlines
Photo File 94



110' - 125' section
Photo File 95



Antenna #19
Photo File 96

Proventus Structural Services, LLC

Please contact *Angie Shyrigh* for any questions regarding the content of this report.
(614) 312-8107 or angie@proventusonline.com



Antenna #20
Photo File 97



Antenna #21
Photo File 98



Antenna #20 label
Photo File 99



Antenna #21 label
Photo File 100

Proventus Structural Services, LLC

Please contact *Angie Shyrigh* for any questions regarding the content of this report.
(614) 312-8107 or angie@proventusonline.com



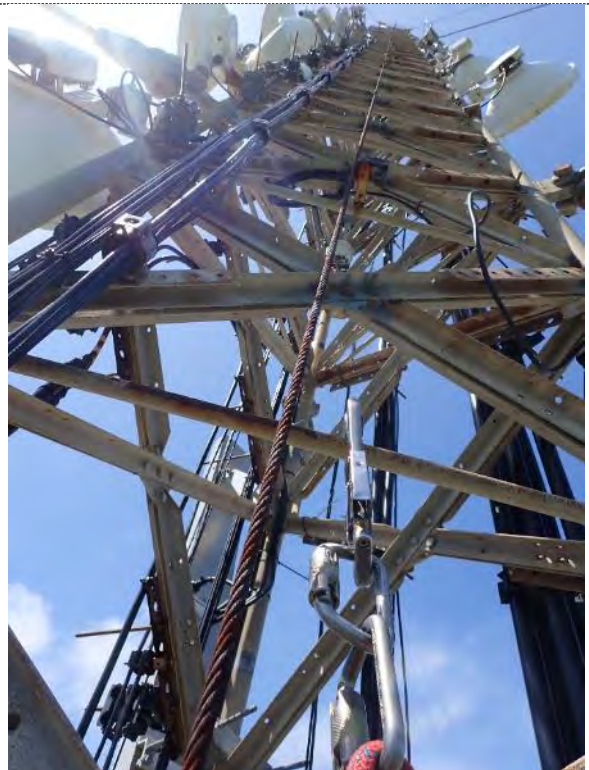
125' leg splice
Photo File 101



125' leg splice
Photo File 102



125' leg splice
Photo File 103



125' - 140' section
Photo File 104

Proventus Structural Services, LLC

Please contact *Angie Shyrigh* for any questions regarding the content of this report.
(614) 312-8107 or angie@proventusonline.com



A leg side light
Photo File 105



B leg side light
Photo File 106



B leg side light
Photo File 107



Side light conduit
Photo File 108

Proventus Structural Services, LLC

Please contact Angie Shyrigh for any questions regarding the content of this report.
(614) 312-8107 or angie@proventusonline.com



C leg side light
Photo File 109



Antenna #22
Photo File 110



Antenna #23, radio #24
Photo File 111



Antenna #23 label
Photo File 112

Proventus Structural Services, LLC

Please contact *Angie Shyrigh* for any questions regarding the content of this report.
(614) 312-8107 or angie@proventusonline.com



Antenna #25
Photo File 113



Antenna #25 label
Photo File 114



Antenna #26, radio #27
Photo File 115



Antenna #26 label
Photo File 116

Proventus Structural Services, LLC

Please contact Angie Shyrigh for any questions regarding the content of this report.
(614) 312-8107 or angie@proventusonline.com



133' guy attachment
Photo File 117



133' guy attachment
Photo File 118



133' guy attachment
Photo File 119



133' guy attachment
Photo File 120

Proventus Structural Services, LLC

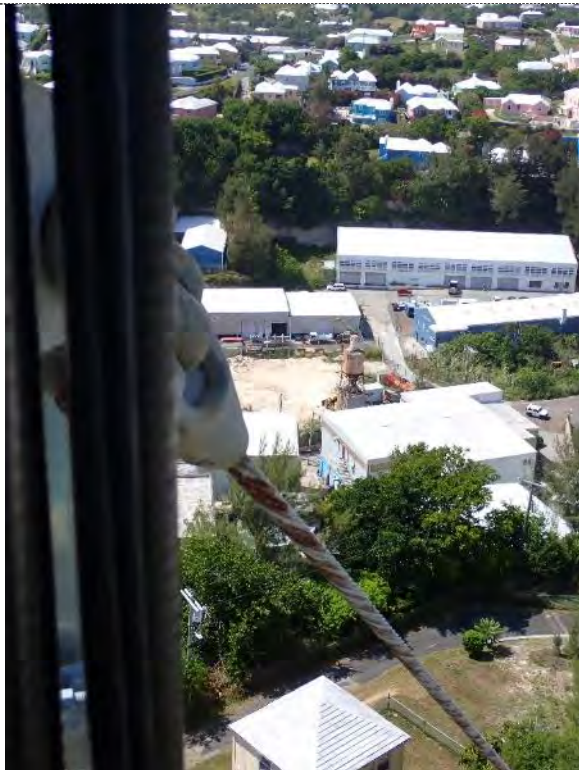
Please contact Angie Shyrigh for any questions regarding the content of this report.
(614) 312-8107 or angie@proventusonline.com



133' guy attachment
Photo File 121



133' guy attachment
Photo File 122



133' guy attachment
Photo File 123



133' guy attachment
Photo File 124

Proventus Structural Services, LLC

Please contact *Angie Shyrigh* for any questions regarding the content of this report.
(614) 312-8107 or angie@proventusonline.com



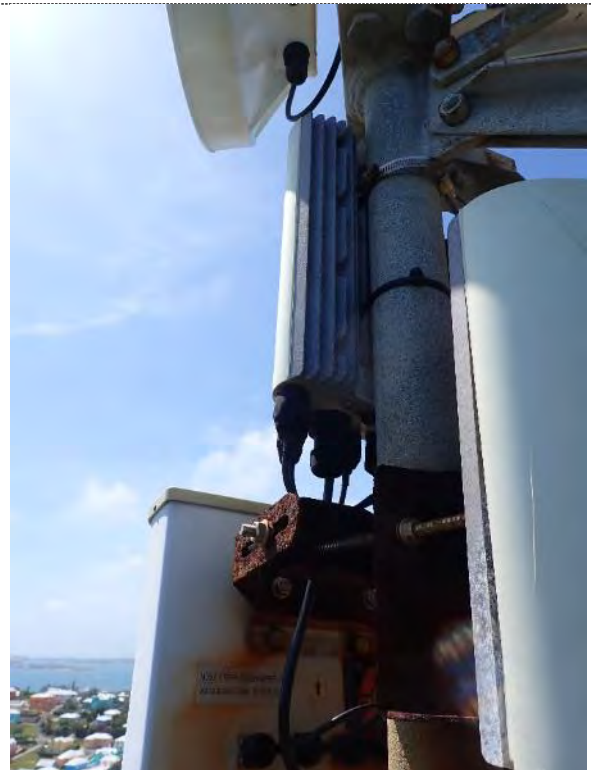
Antenna #28
Photo File 125



Antenna #31
Photo File 126



Radios #32, #33
Photo File 127



Radio #33
Photo File 128

Proventus Structural Services, LLC

Please contact *Angie Shyrigh* for any questions regarding the content of this report.
(614) 312-8107 or angie@proventusonline.com



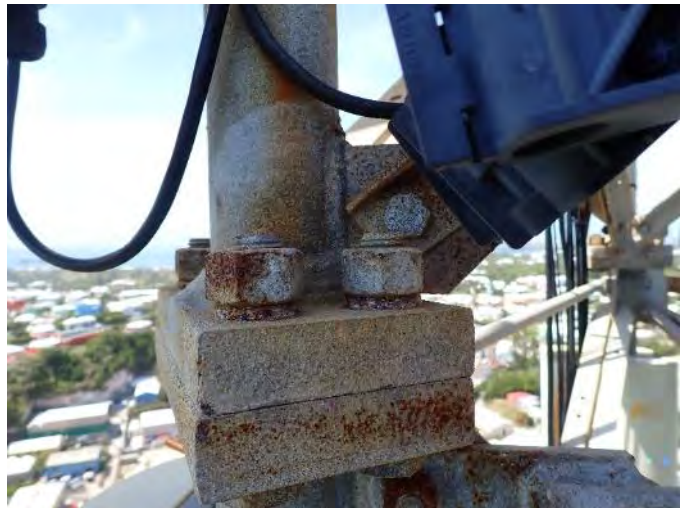
Antenna #29, radio #30
Photo File 129



140' leg splice
Photo File 130



140' leg splice
Photo File 131



140' leg splice
Photo File 132

Proventus Structural Services, LLC

Please contact Angie Shyrigh for any questions regarding the content of this report.
(614) 312-8107 or angie@proventusonline.com



140' - 155' section
Photo File 133



Tower surface condition
Photo File 134



Tower surface condition
Photo File 135



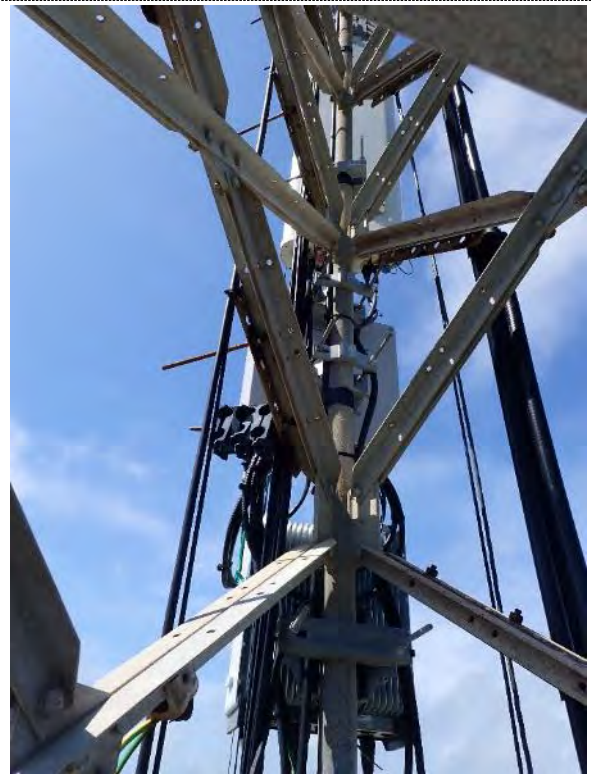
Antenna #34
Photo File 136

Proventus Structural Services, LLC

Please contact *Angie Shyrigh* for any questions regarding the content of this report.
(614) 312-8107 or angie@proventusonline.com



Antenna #35, radio #36
Photo File 137



Radio #40
Photo File 138



Antenna #37, radios #38, #39
Photo File 139



Radio #41
Photo File 140

Proventus Structural Services, LLC

Please contact Angie Shyrigh for any questions regarding the content of this report.
(614) 312-8107 or angie@proventusonline.com



Antenna #42
Photo File 141



Antenna #42 label
Photo File 142



Antenna #43, radio #44
Photo File 143



Antenna #45, radio #46
Photo File 144

Proventus Structural Services, LLC

Please contact *Angie Shyrigh* for any questions regarding the content of this report.
(614) 312-8107 or angie@proventusonline.com



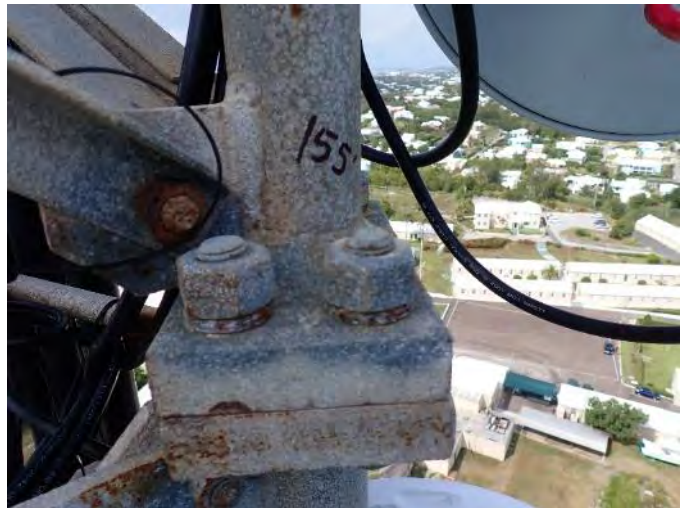
Radio #46 label
Photo File 145



Antenna #47
Photo File 146



Antenna #48
Photo File 147



155' leg splice
Photo File 148

Proventus Structural Services, LLC

Please contact Angie Shyrigh for any questions regarding the content of this report.
(614) 312-8107 or angie@proventusonline.com



155' leg splice
Photo File 149



155' leg splice
Photo File 150



155' - 170' section
Photo File 151



Antenna #49
Photo File 152

Proventus Structural Services, LLC

Please contact *Angie Shyrigh* for any questions regarding the content of this report.
(614) 312-8107 or angie@proventusonline.com



Radio #50
Photo File 153



Antenna #51
Photo File 154



Radio #52
Photo File 155



Radio #55, radio #56, antenna #57
Photo File 156

Proventus Structural Services, LLC

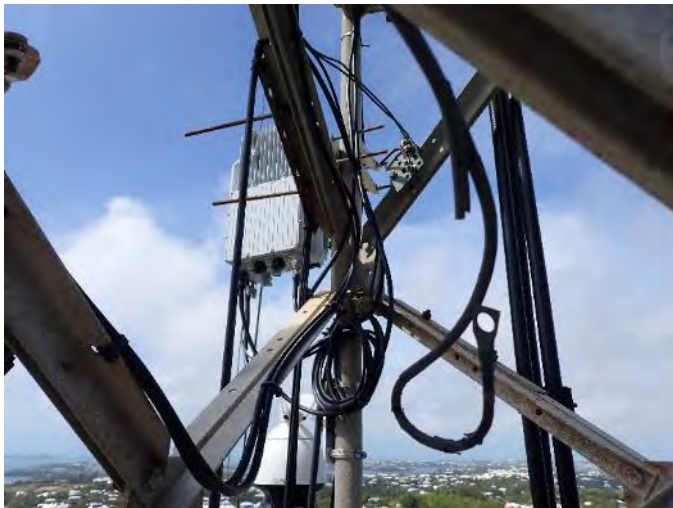
Please contact Angie Shyrigh for any questions regarding the content of this report.
(614) 312-8107 or angie@proventusonline.com



Radio #54
Photo File 157



Camera #55
Photo File 158



Radio #59
Photo File 159



Radio #58
Photo File 160

Proventus Structural Services, LLC

Please contact *Angie Shyrigh* for any questions regarding the content of this report.
(614) 312-8107 or angie@proventusonline.com



Radio #58 label
Photo File 161



Camera #54
Photo File 162



Camera #54 label
Photo File 163



Antenna #51
Photo File 164

Proventus Structural Services, LLC

Please contact *Angie Shyrigh* for any questions regarding the content of this report.
(614) 312-8107 or angie@proventusonline.com



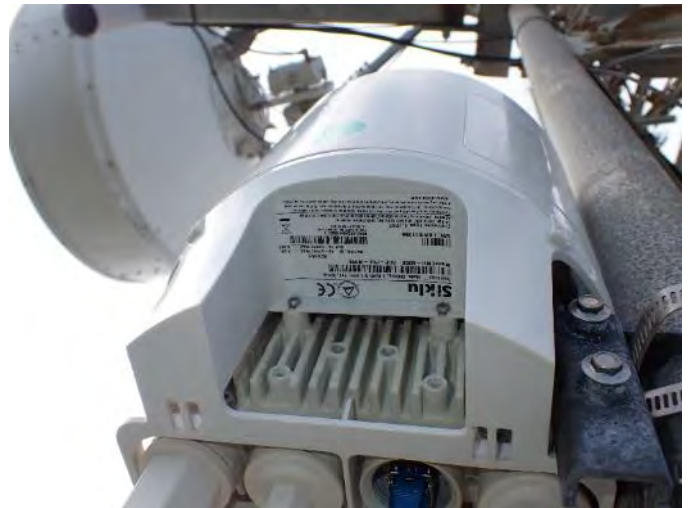
Antenna #51 feedhorn label
Photo File 165



Radio #55
Photo File 166



Radio #53
Photo File 167



Radio #53 label
Photo File 168

Proventus Structural Services, LLC

Please contact Angie Shyrigh for any questions regarding the content of this report.
(614) 312-8107 or angie@proventusonline.com



Radio #59
Photo File 169



Radio #59 label
Photo File 170



Antenna #57
Photo File 171



Antenna #57
Photo File 172

Proventus Structural Services, LLC

Please contact *Angie Shyrigh* for any questions regarding the content of this report.
(614) 312-8107 or angie@proventusonline.com



Radio #58
Photo File 173



Antenna #62, radios #63, #64
Photo File 174



Antenna #60
Photo File 175



Antenna #60 label
Photo File 176

Proventus Structural Services, LLC

Please contact *Angie Shyrigh* for any questions regarding the content of this report.
(614) 312-8107 or angie@proventusonline.com



Antenna #61
Photo File 177



Radio #67
Photo File 178



Antenna #69
Photo File 179



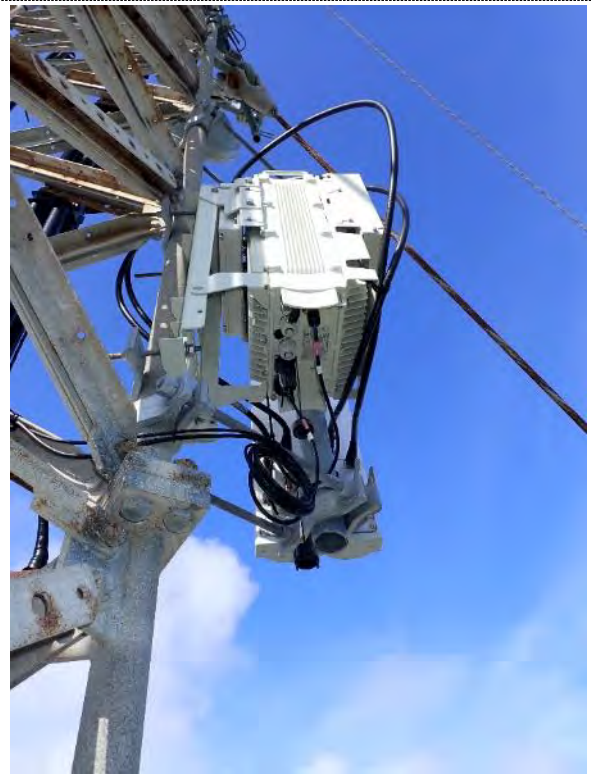
Radio #66
Photo File 180

Proventus Structural Services, LLC

Please contact *Angie Shyrigh* for any questions regarding the content of this report.
(614) 312-8107 or angie@proventusonline.com



Radio #70, antennas #72, #73
Photo File 181



Antenna #68, radio #71
Photo File 182



170' leg splice
Photo File 183



170' leg splice
Photo File 184

Proventus Structural Services, LLC

Please contact Angie Shyrigh for any questions regarding the content of this report.
(614) 312-8107 or angie@proventusonline.com



170' leg splice
Photo File 185



170' - 185' section
Photo File 186



Radio #67, antenna #69
Photo File 187



Antenna #69
Photo File 188

Proventus Structural Services, LLC

Please contact Angie Shyrigh for any questions regarding the content of this report.
(614) 312-8107 or angie@proventusonline.com



Antenna #69
Photo File 189



Radio #71
Photo File 190



Radio #71 label
Photo File 191



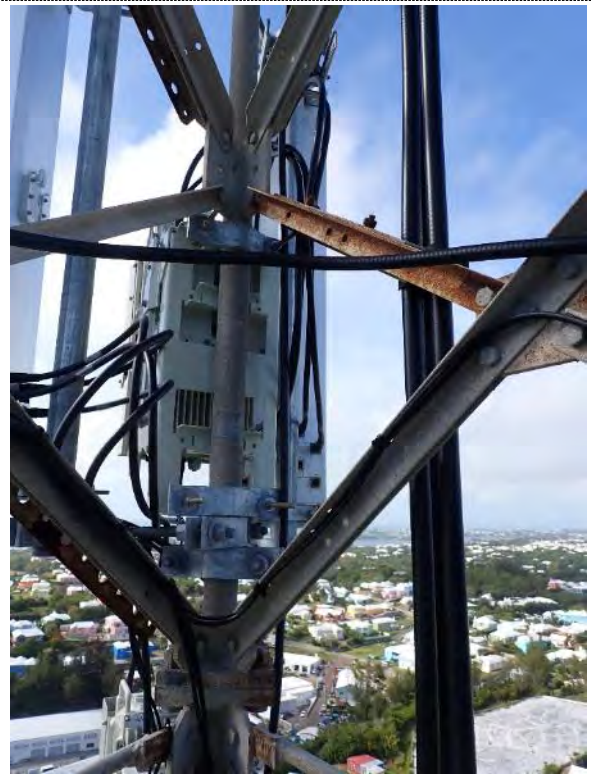
Antenna #68
Photo File 192

Proventus Structural Services, LLC

Please contact *Angie Shyrigh* for any questions regarding the content of this report.
(614) 312-8107 or angie@proventusonline.com



Antenna #68 label
Photo File 193



Radio #70, antennas #72, #73
Photo File 194



Radio #70, antennas #72, #73
Photo File 195



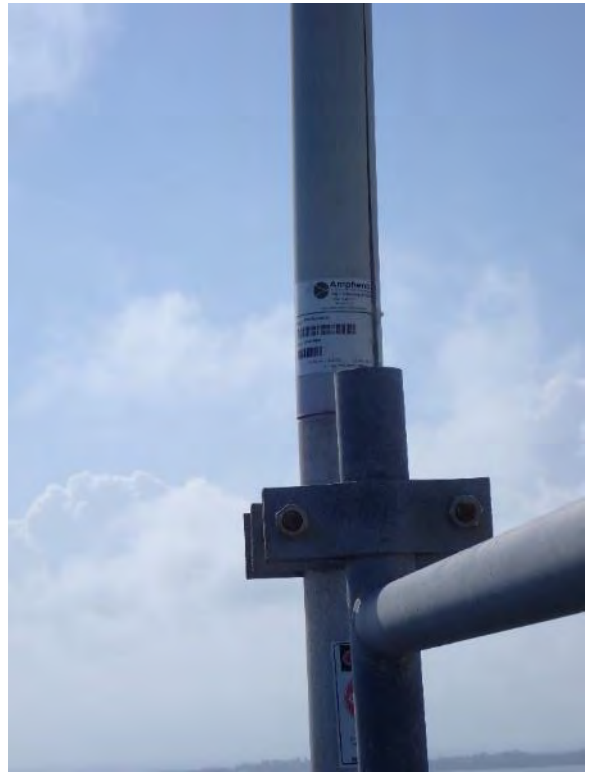
Antenna #74
Photo File 196

Proventus Structural Services, LLC

Please contact Angie Shyrigh for any questions regarding the content of this report.
(614) 312-8107 or angie@proventusonline.com



Antenna #74
Photo File 197



Antenna #74 label
Photo File 198



178' guy attachment
Photo File 199



178' guy attachment
Photo File 200

Proventus Structural Services, LLC

Please contact *Angie Shyrigh* for any questions regarding the content of this report.
(614) 312-8107 or angie@proventusonline.com



178' guy attachment
Photo File 201



178' guy attachment
Photo File 202



178' guy attachment
Photo File 203



178' guy attachment
Photo File 204

Proventus Structural Services, LLC

Please contact Angie Shyrigh for any questions regarding the content of this report.
(614) 312-8107 or angie@proventusonline.com



178' guy attachment
Photo File 205



178' guy attachment
Photo File 206



178' guy attachment
Photo File 207



Antenna #75, radios #76, #77
Photo File 208

Proventus Structural Services, LLC

Please contact *Angie Shyrigh* for any questions regarding the content of this report.
(614) 312-8107 or angie@proventusonline.com



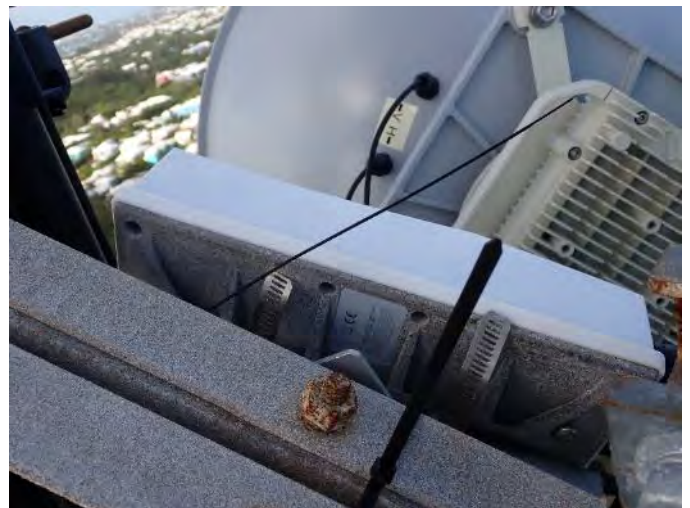
Antenna #78, radios #79, #80
Photo File 209



Antenna #78 label
Photo File 210



Radio #79 label
Photo File 211



Radio #80
Photo File 212

Proventus Structural Services, LLC

Please contact Angie Shyrigh for any questions regarding the content of this report.
(614) 312-8107 or angie@proventusonline.com



185' leg splice
Photo File 213



185' leg splice
Photo File 214



185' leg splice
Photo File 215



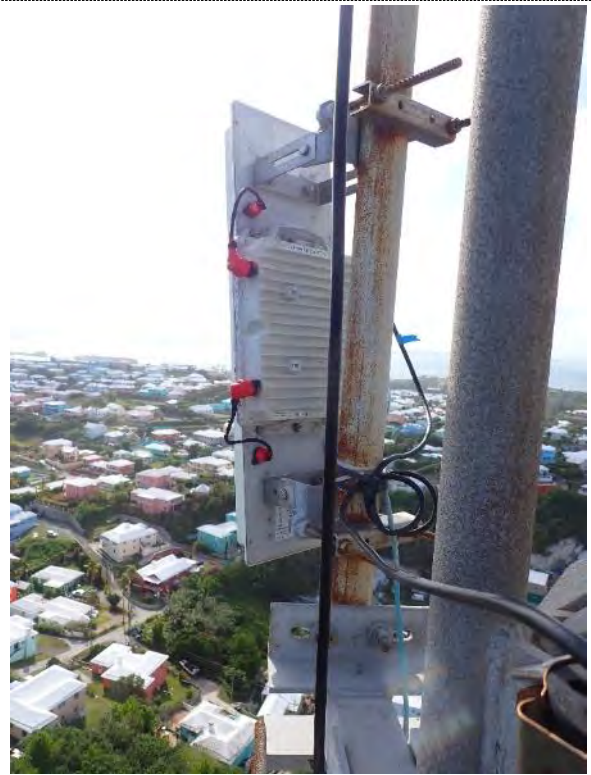
185' - 200' section
Photo File 216

Proventus Structural Services, LLC

Please contact *Angie Shyrigh* for any questions regarding the content of this report.
(614) 312-8107 or angie@proventusonline.com



Tower surface condition
Photo File 217



Antenna #84, radio #85
Photo File 218



Antenna #82, radio #83
Photo File 219



200' leg splice
Photo File 220

Proventus Structural Services, LLC

Please contact Angie Shyrigh for any questions regarding the content of this report.
(614) 312-8107 or angie@proventusonline.com



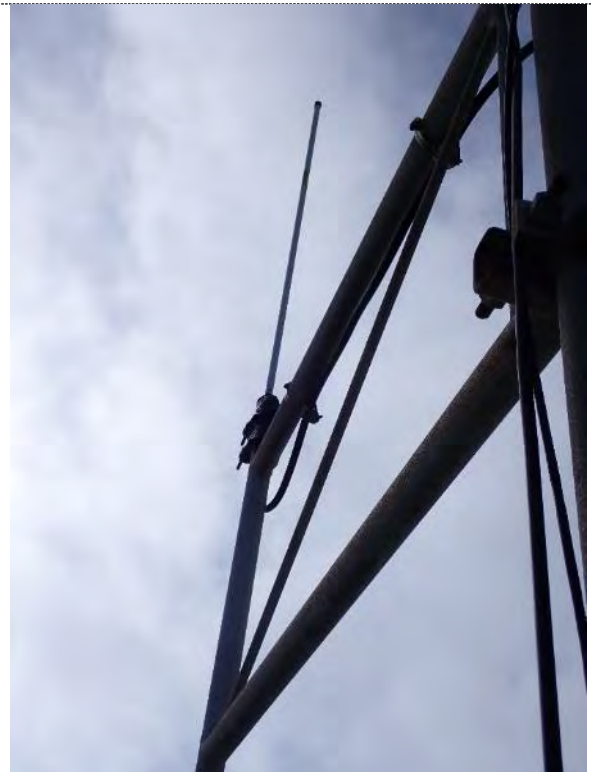
200' leg splice
Photo File 221



200' leg splice
Photo File 222



200' - 215' section
Photo File 223



Antenna #86
Photo File 224

Proventus Structural Services, LLC

Please contact *Angie Shyrigh* for any questions regarding the content of this report.
(614) 312-8107 or angie@proventusonline.com



Tower surface condition
Photo File 225



Antenna #86
Photo File 226



Antenna #87, radios #88, #89
Photo File 227



Stiff arm attached to tower diagonal
Photo File 228

Proventus Structural Services, LLC

Please contact *Angie Shyrigh* for any questions regarding the content of this report.
(614) 312-8107 or angie@proventusonline.com



Dead feedline
Photo File 229



Antenna #92
Photo File 230



Antenna #91
Photo File 231



230' leg splice
Photo File 232

Proventus Structural Services, LLC

Please contact *Angie Shyrigh* for any questions regarding the content of this report.
(614) 312-8107 or angie@proventusonline.com



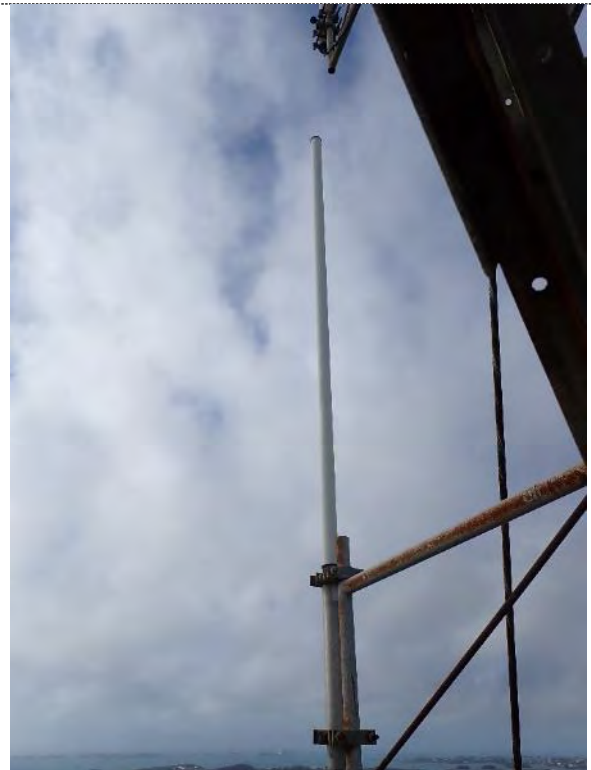
230' leg splice
Photo File 233



230' leg splice
Photo File 234



Antenna #93, radio #94
Photo File 235



Antenna #93
Photo File 236

Proventus Structural Services, LLC

Please contact Angie Shyrigh for any questions regarding the content of this report.
(614) 312-8107 or angie@proventusonline.com



Antenna #93
Photo File 237



240' leg splice
Photo File 238



240' leg splice
Photo File 239



240' leg splice
Photo File 240

Proventus Structural Services, LLC

Please contact *Angie Shyrigh* for any questions regarding the content of this report.
(614) 312-8107 or angie@proventusonline.com



238' guy attachment
Photo File 241



238' guy attachment
Photo File 242



238' guy attachment
Photo File 243



238' guy attachment
Photo File 244

Proventus Structural Services, LLC

Please contact *Angie Shyrigh* for any questions regarding the content of this report.
(614) 312-8107 or angie@proventusonline.com



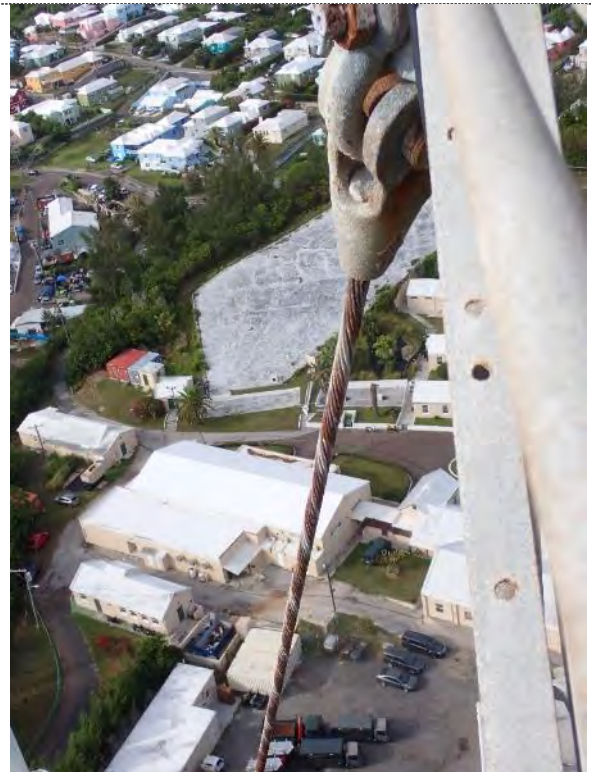
238' guy attachment
Photo File 245



238' guy attachment
Photo File 246



238' guy attachment
Photo File 247



238' guy attachment
Photo File 248

Proventus Structural Services, LLC

Please contact Angie Shyrigh for any questions regarding the content of this report.
(614) 312-8107 or angie@proventusonline.com



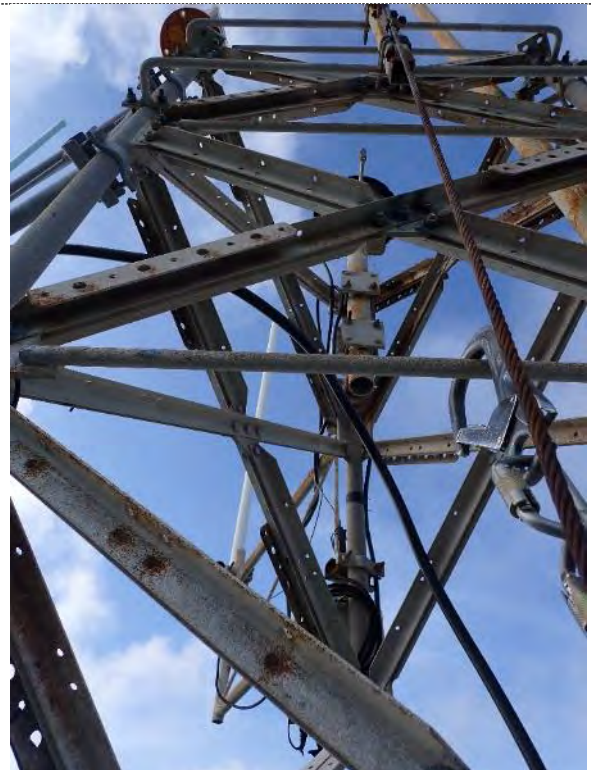
240' leg splice
Photo File 249



240' leg splice
Photo File 250



240' leg splice
Photo File 251



240' - 250' section
Photo File 252

Proventus Structural Services, LLC

Please contact *Angie Shyrigh* for any questions regarding the content of this report.
(614) 312-8107 or angie@proventusonline.com



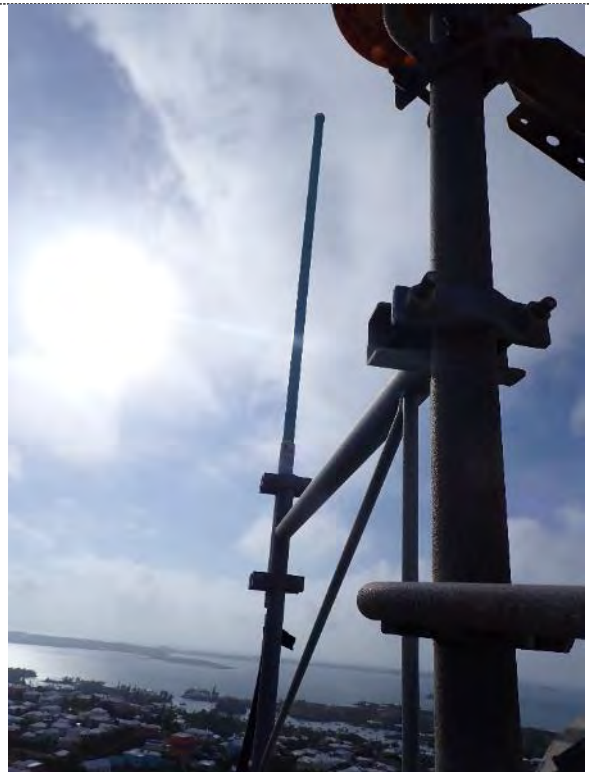
Antenna #97
Photo File 253



Radio #98
Photo File 254



Antenna #99
Photo File 255



Antenna #99
Photo File 256

Proventus Structural Services, LLC

Please contact *Angie Shyrigh* for any questions regarding the content of this report.
(614) 312-8107 or angie@proventusonline.com



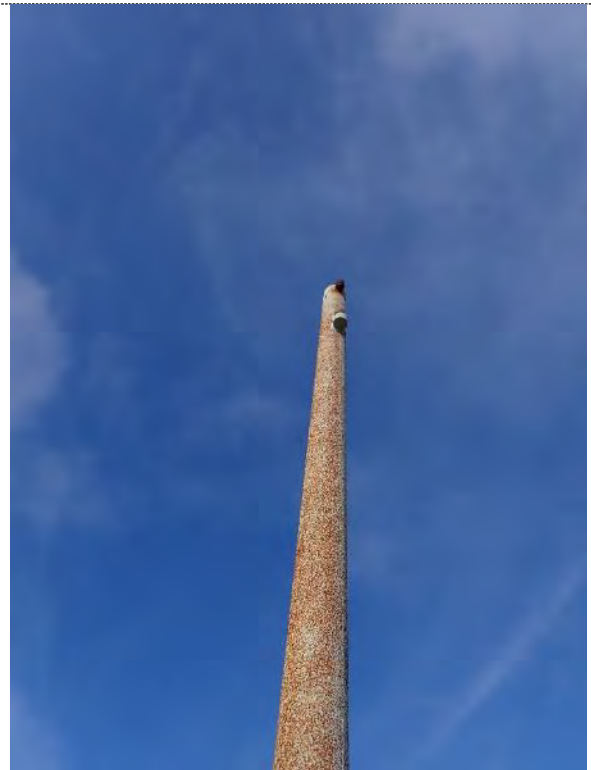
Beacon remnant
Photo File 257



Horizontal missing from top of tower
Photo File 258



Horizontal missing from top of tower
Photo File 259



Lightning rod extension, no lightning rod
Photo File 260

Proventus Structural Services, LLC

Please contact *Angie Shyrigh* for any questions regarding the content of this report.
(614) 312-8107 or angie@proventusonline.com



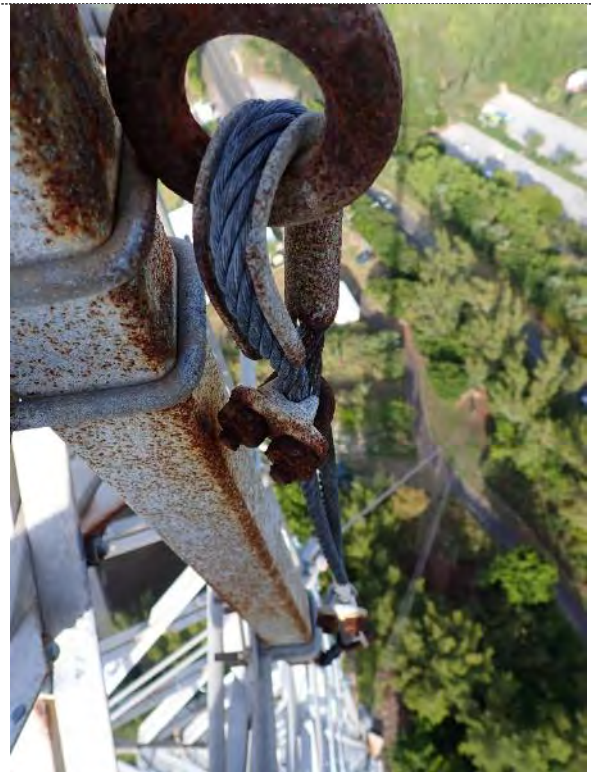
Operation beacon
Photo File 261



Operational beacon
Photo File 262



Top safety cable bracket
Photo File 263



Top safety cable bracket
Photo File 264

Proventus Structural Services, LLC

Please contact Angie Shyrigh for any questions regarding the content of this report.
(614) 312-8107 or angie@proventusonline.com



Anchor A
Photo File 265



Anchor A
Photo File 266



Anchor A
Photo File 267



Anchor A
Photo File 268

Proventus Structural Services, LLC

Please contact *Angie Shyrigh* for any questions regarding the content of this report.
(614) 312-8107 or angie@proventusonline.com



Anchor A
Photo File 269



Anchor A
Photo File 270



Anchor A
Photo File 271



Anchor A grounding
Photo File 272

Proventus Structural Services, LLC

Please contact *Angie Shyrigh* for any questions regarding the content of this report.
(614) 312-8107 or angie@proventusonline.com



Anchor A
Photo File 273



Anchor A
Photo File 274



Anchor A profile
Photo File 275



Anchor A profile
Photo File 276

Proventus Structural Services, LLC

Please contact *Angie Shyrigh* for any questions regarding the content of this report.
(614) 312-8107 or angie@proventusonline.com



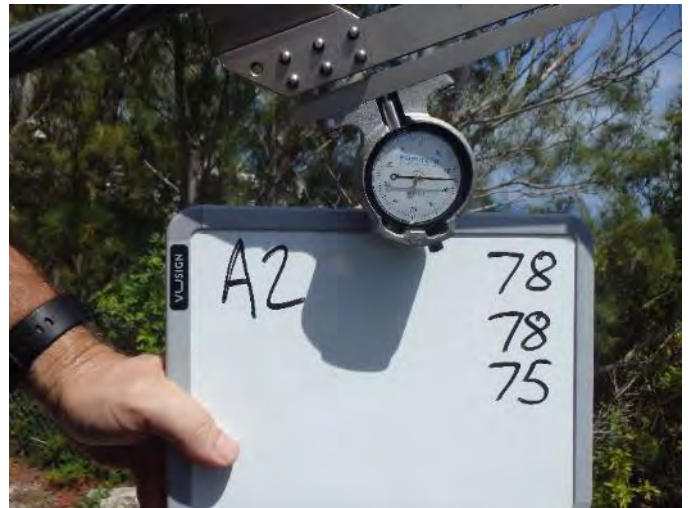
Anchor A profile
Photo File 277



Anchor A profile
Photo File 278



A 1 tensions
Photo File 279



A 2 tensions
Photo File 280

Proventus Structural Services, LLC

Please contact Angie Shyrigh for any questions regarding the content of this report.
(614) 312-8107 or angie@proventusonline.com



A 3 tensions
Photo File 281



A 4 tensions
Photo File 282



A 5 tensions
Photo File 283



Anchor A grounding
Photo File 284

Proventus Structural Services, LLC

Please contact Angie Shyrigh for any questions regarding the content of this report.
(614) 312-8107 or angie@proventusonline.com



A 3 disconnected ground wire
Photo File 285



A 4 disconnected ground wire
Photo File 286



Anchor B
Photo File 287



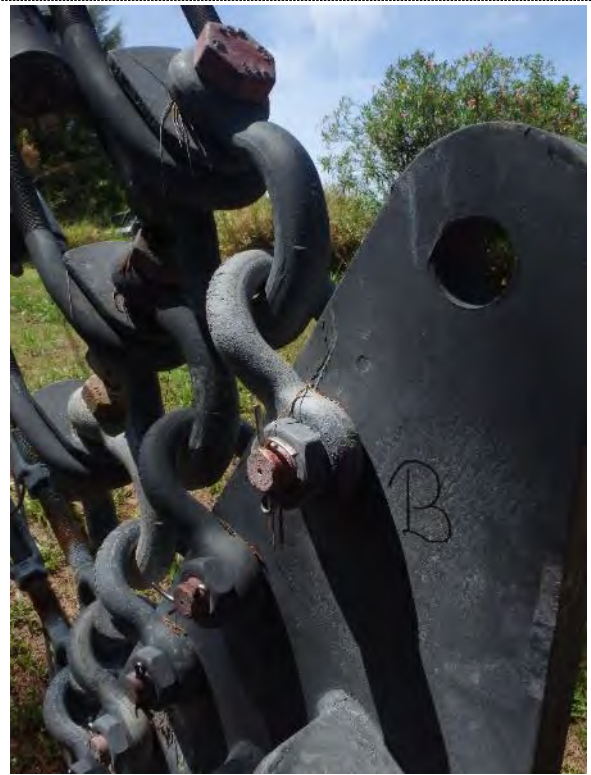
Anchor B
Photo File 288

Proventus Structural Services, LLC

Please contact *Angie Shyrigh* for any questions regarding the content of this report.
(614) 312-8107 or angie@proventusonline.com



Anchor B
Photo File 289



Anchor B
Photo File 290



Anchor B
Photo File 291



Anchor B
Photo File 292

Proventus Structural Services, LLC

Please contact *Angie Shyrigh* for any questions regarding the content of this report.
(614) 312-8107 or angie@proventusonline.com



Anchor B
Photo File 293



Anchor B hardware corrosion
Photo File 294



Anchor B
Photo File 295



Anchor B
Photo File 296

Proventus Structural Services, LLC

Please contact *Angie Shyrigh* for any questions regarding the content of this report.
(614) 312-8107 or angie@proventusonline.com



Anchor B
Photo File 297



Anchor B
Photo File 298



Anchor B grounding
Photo File 299



B 5 disconnected ground
Photo File 300

Proventus Structural Services, LLC

Please contact *Angie Shyrigh* for any questions regarding the content of this report.
(614) 312-8107 or angie@proventusonline.com



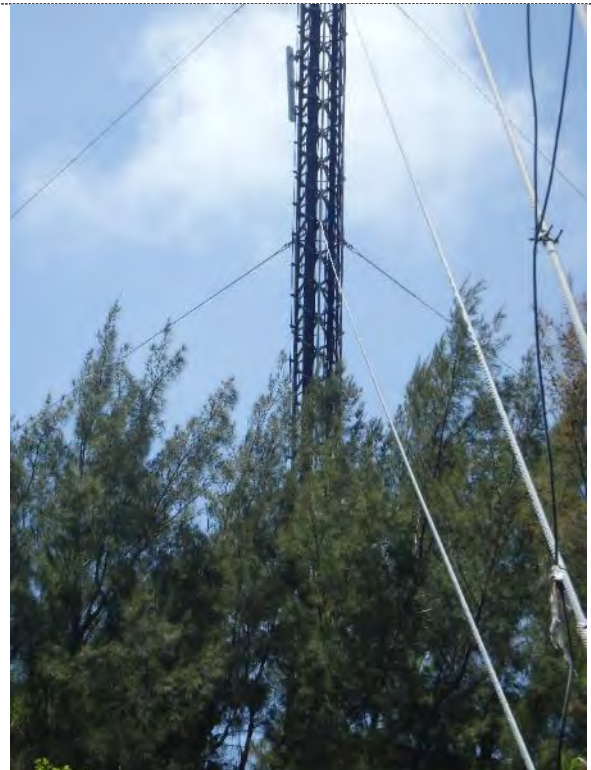
B 5 disconnected ground
Photo File 301



Anchor B
Photo File 302



Anchor B profile
Photo File 303



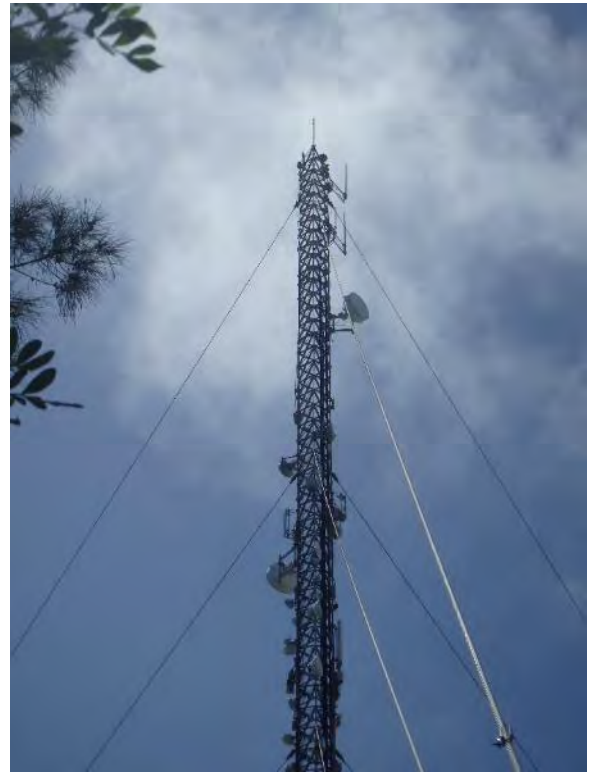
Anchor B profile
Photo File 304

Proventus Structural Services, LLC

Please contact *Angie Shyrigh* for any questions regarding the content of this report.
(614) 312-8107 or angie@proventusonline.com



Anchor B profile
Photo File 305



Anchor B profile
Photo File 306



B 1 tensions
Photo File 307



B 2 tensions
Photo File 308

Proventus Structural Services, LLC

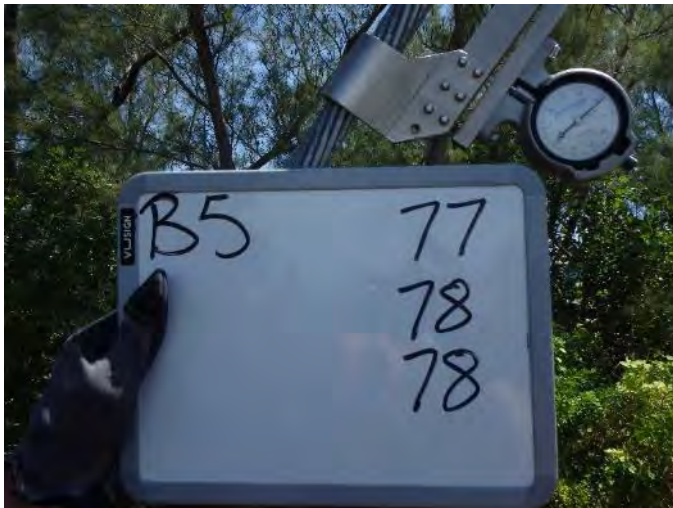
Please contact Angie Shyrigh for any questions regarding the content of this report.
(614) 312-8107 or angie@proventusonline.com



B 3 tensions
Photo File 309



B 4 tensions
Photo File 310



B 5 tensions
Photo File 311



Anchor B fan plate out of alignment
Photo File 312

Proventus Structural Services, LLC

Please contact Angie Shyrigh for any questions regarding the content of this report.
(614) 312-8107 or angie@proventusonline.com



Anchor C
Photo File 313



Anchor C
Photo File 314



Anchor C
Photo File 315



Anchor C
Photo File 316

Proventus Structural Services, LLC

Please contact *Angie Shyrigh* for any questions regarding the content of this report.
(614) 312-8107 or angie@proventusonline.com



Anchor C
Photo File 317



Anchor C
Photo File 318



Anchor C
Photo File 319



Anchor C
Photo File 320

Proventus Structural Services, LLC

Please contact *Angie Shyrigh* for any questions regarding the content of this report.
(614) 312-8107 or angie@proventusonline.com



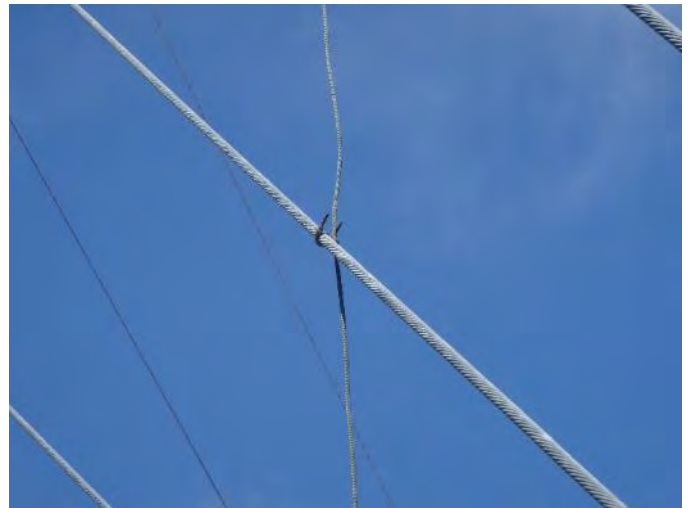
Anchor C grounding
Photo File 321



C 1 missing ground clamp
Photo File 322



C 3 disconnected ground
Photo File 323



C 4 disconnected ground
Photo File 324

Proventus Structural Services, LLC

Please contact *Angie Shyrigh* for any questions regarding the content of this report.
(614) 312-8107 or angie@proventusonline.com



Anchor C missing end sleeves
Photo File 325



Anchor C fan plate out of alignment
Photo File 326



Anchor C fan plate out of alignment
Photo File 327



Anchor C profile
Photo File 328

Proventus Structural Services, LLC

Please contact *Angie Shyrigh* for any questions regarding the content of this report.
(614) 312-8107 or angie@proventusonline.com



Anchor C profile
Photo File 329



Anchor C profile
Photo File 330



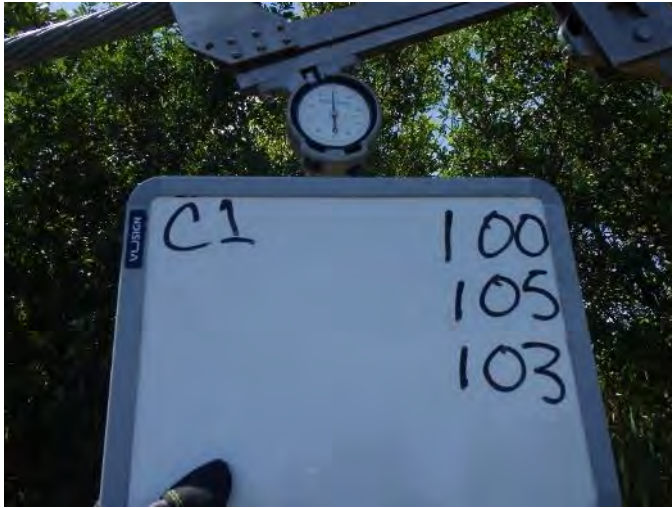
Anchor C profile
Photo File 331



Anchor C profile
Photo File 332

Proventus Structural Services, LLC

Please contact *Angie Shyrigh* for any questions regarding the content of this report.
(614) 312-8107 or angie@proventusonline.com



C 1 tensions
Photo File 333



C 2 tensions
Photo File 334



C 3 tensions
Photo File 335



C 4 tensions
Photo File 336

Proventus Structural Services, LLC

Please contact Angie Shyrigh for any questions regarding the content of this report.
(614) 312-8107 or angie@proventusonline.com



C 5 tensions
Photo File 337

Proventus Structural Services, LLC

Please contact *Angie Shyrigh* for any questions regarding the content of this report.
(614) 312-8107 or angie@proventusonline.com