



Did You Know...

Failure to use protective clothing or equipment can result in a ticket of

\$
500

Occupational Safety and Health Ticketing Regulations 2012

Schedule 2

Occupational Safety and Health Regulations 2009

Part 16

Regulation 234

Each employer is responsible to provide the appropriate personal protective equipment, training and instructions for its safe use.

OSHR PART 16 – PROTECTIVE CLOTHING AND EQUIPMENT

For more information:

Occupational Safety and Health Act 1982

Occupational Safety and Health Regulations 2009



Department of Health Occupational Safety and Health Office

Metro Building, 6 Hermitage Road

Devonshire, FL 01

Phone: 278-5333 Fax: 232-1941

osho@gov.bm

Check out our website:

www.gov.bm/

occupational-safety-and-health

Please give us your feedback:



GOVERNMENT OF BERMUDA
Department of Health

PROTECT YOUR VULNERABLE PARTS



WORK SAFETY

Use your Personal Protective Equipment (PPE)

IT'S THE LAW!

HEAD PROTECTION

A hard hat can protect you from objects falling from above, bumps to the head from fixed or moving objects, electrical hazards.



FOOT PROTECTION

Safety shoes or boots can protect your feet from foot injury or an electric shock. Wear the right type.

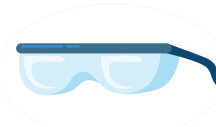


IMPACT PROTECTION
COMPRESSION PROTECTION
PUNCTURE PROTECTION
SLIP PROTECTION

DO YOU WORK AROUND MOVING VEHICLES?



DRESS to be SEEN!
It may **SAVE** your life



EYE AND FACE PROTECTION

If there is a risk of injury to the eyes, face, ears, or front of neck, you may need to wear eye or face protectors.

HAND PROTECTION

Suitable gloves can protect your hands from injury.



- Chemicals
- Welding
- Electrical
- Cuts
- Punctures

HEARING PROTECTION

In some settings you may need to wear earplugs/earmuffs in high noise work areas where chainsaws or heavy equipment are used.



Working at heights above 2 m (6'6")?

You may be required to use fall protection equipment such as a harness or safety belt.



SAFETY HARNESS

